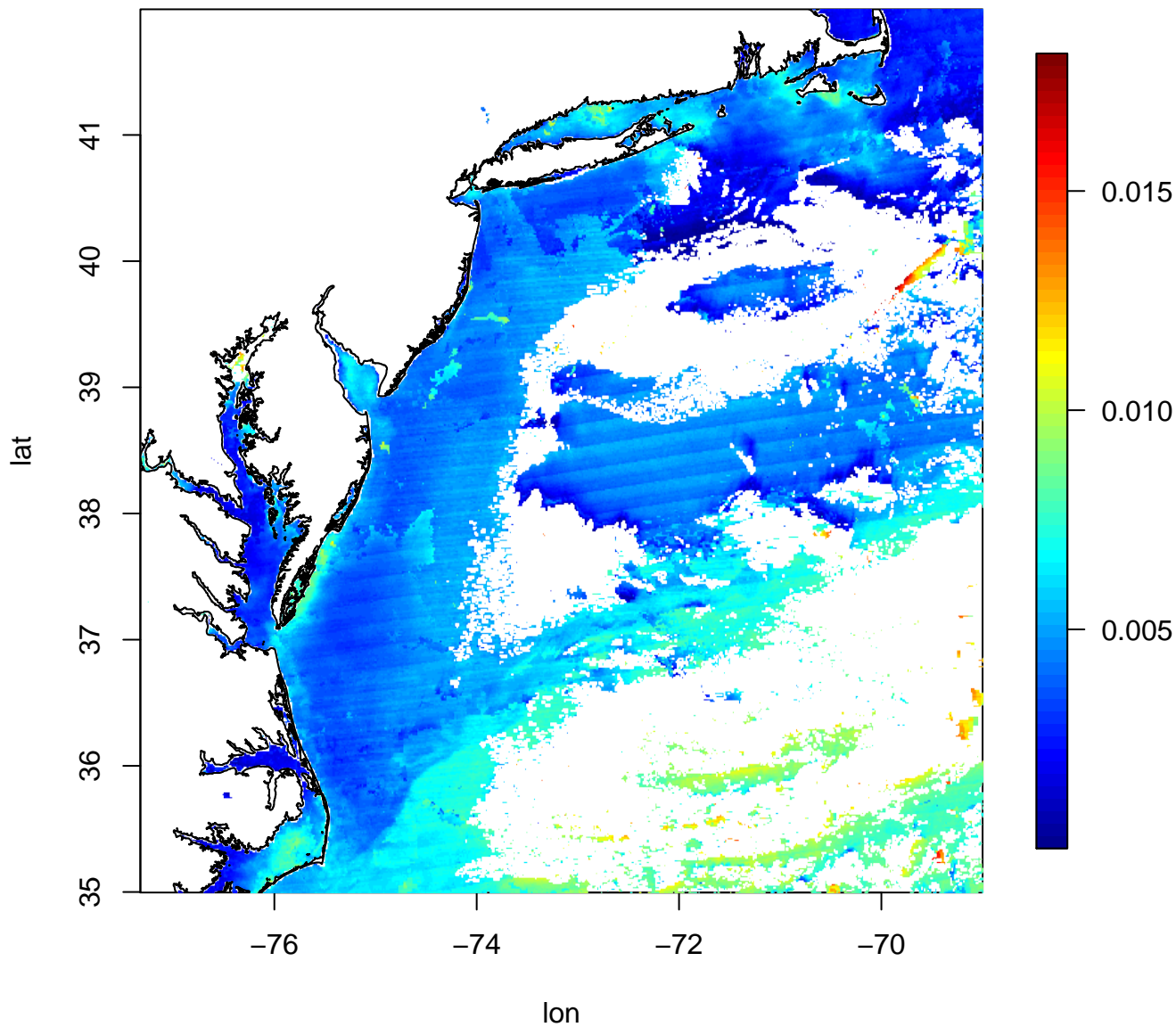
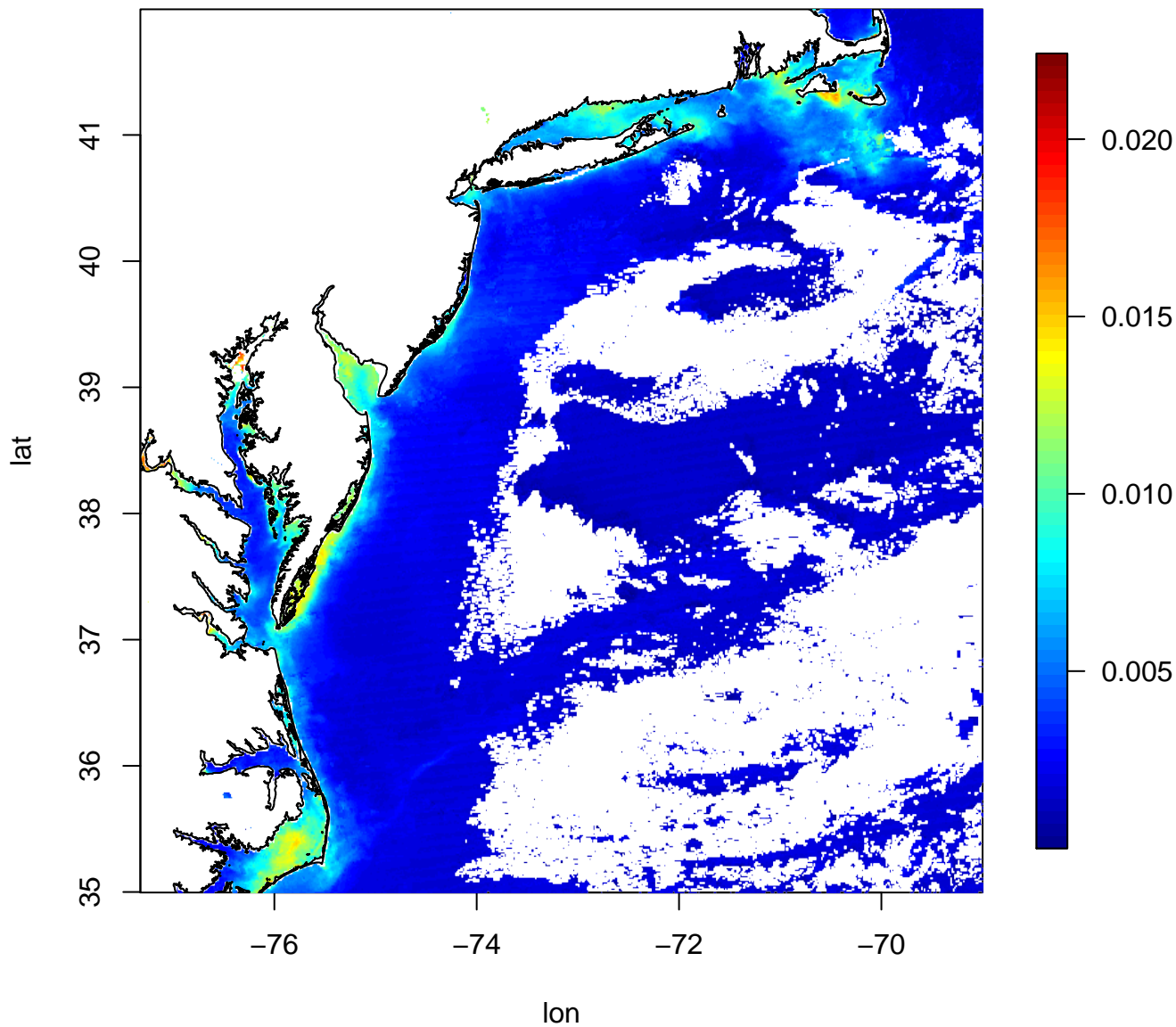


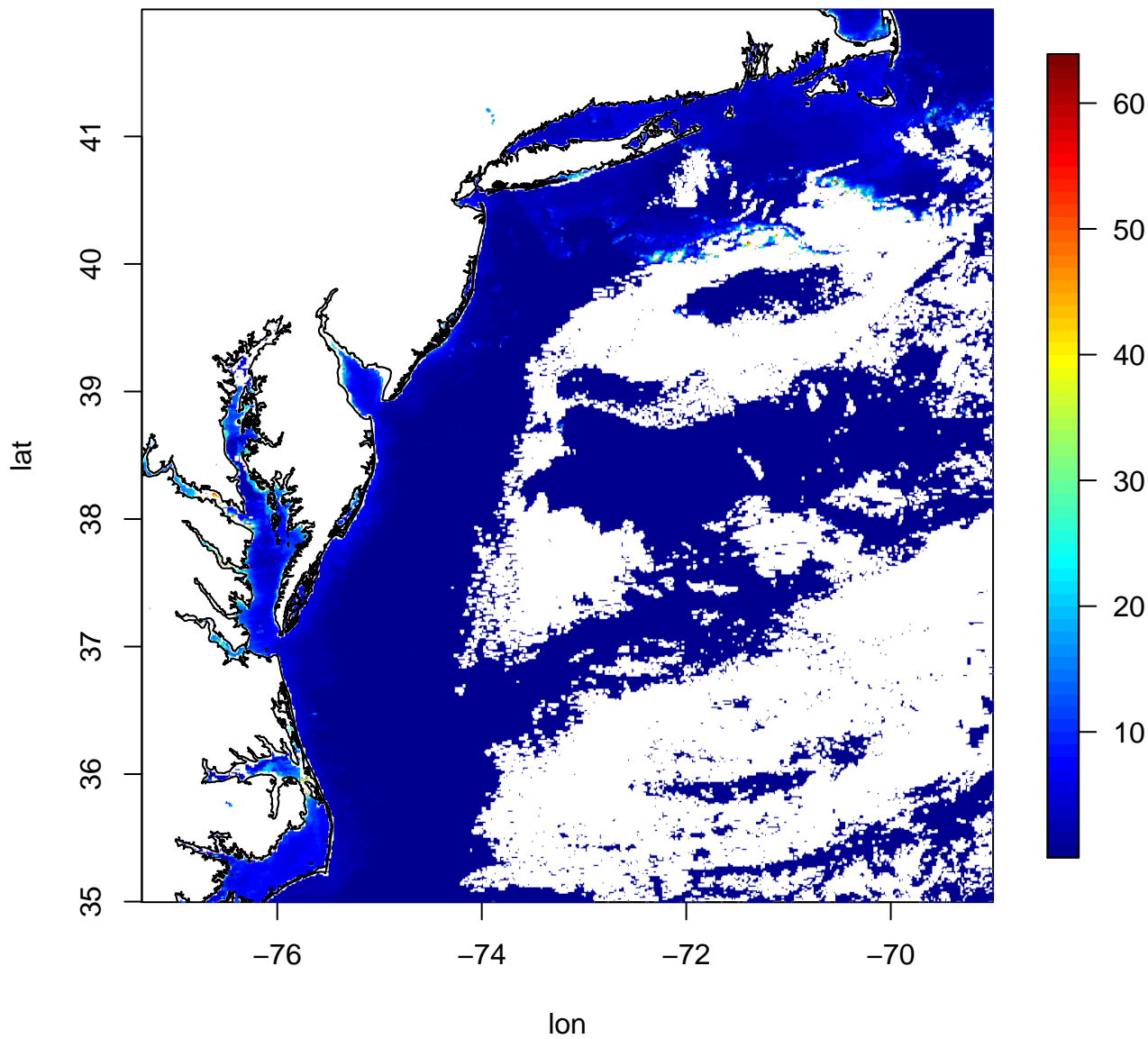
EDA_Rrs_443
Remote sensing reflectance at 443 nm



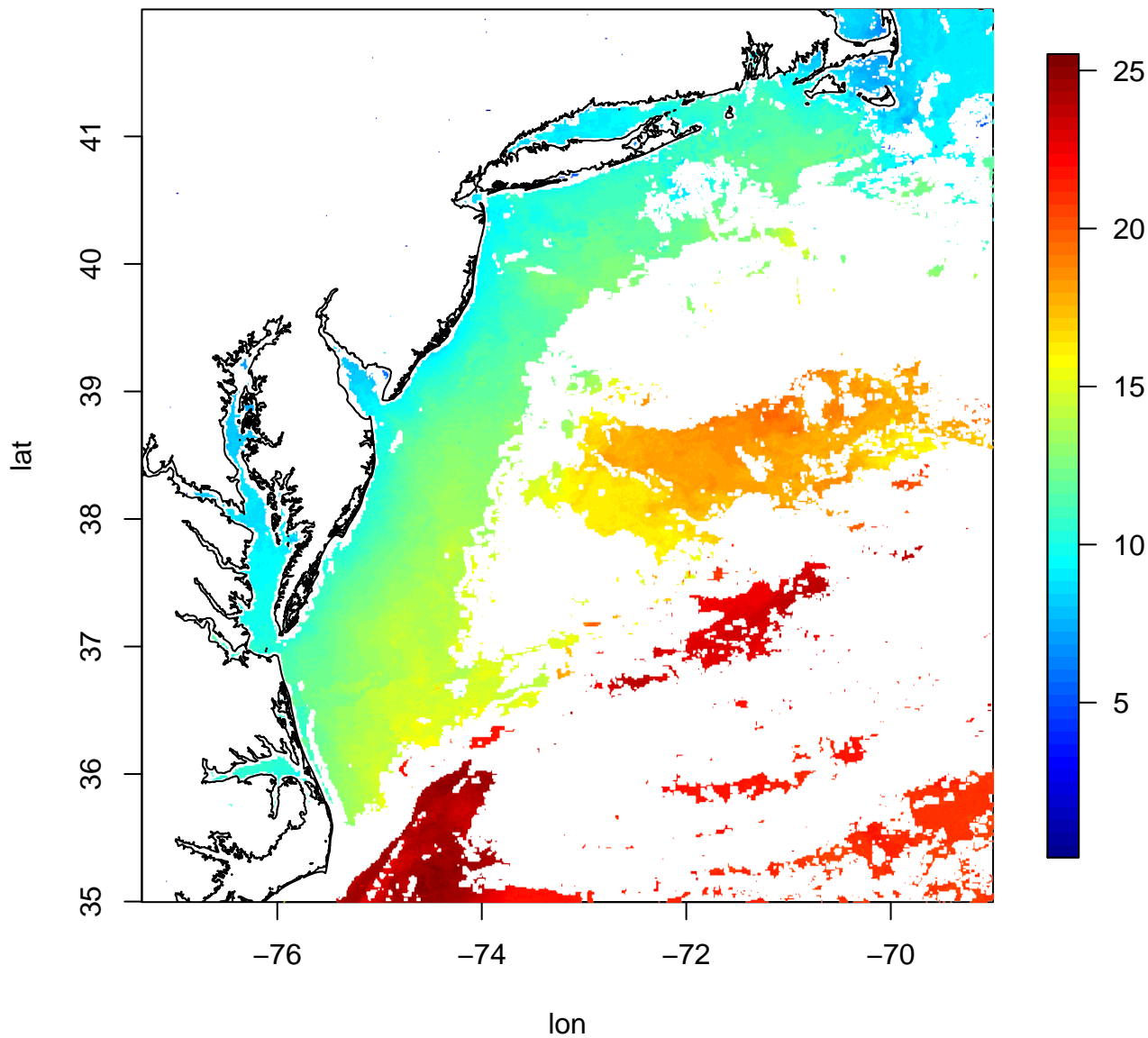
EDA_Rrs_555
Remote sensing reflectance at 555 nm



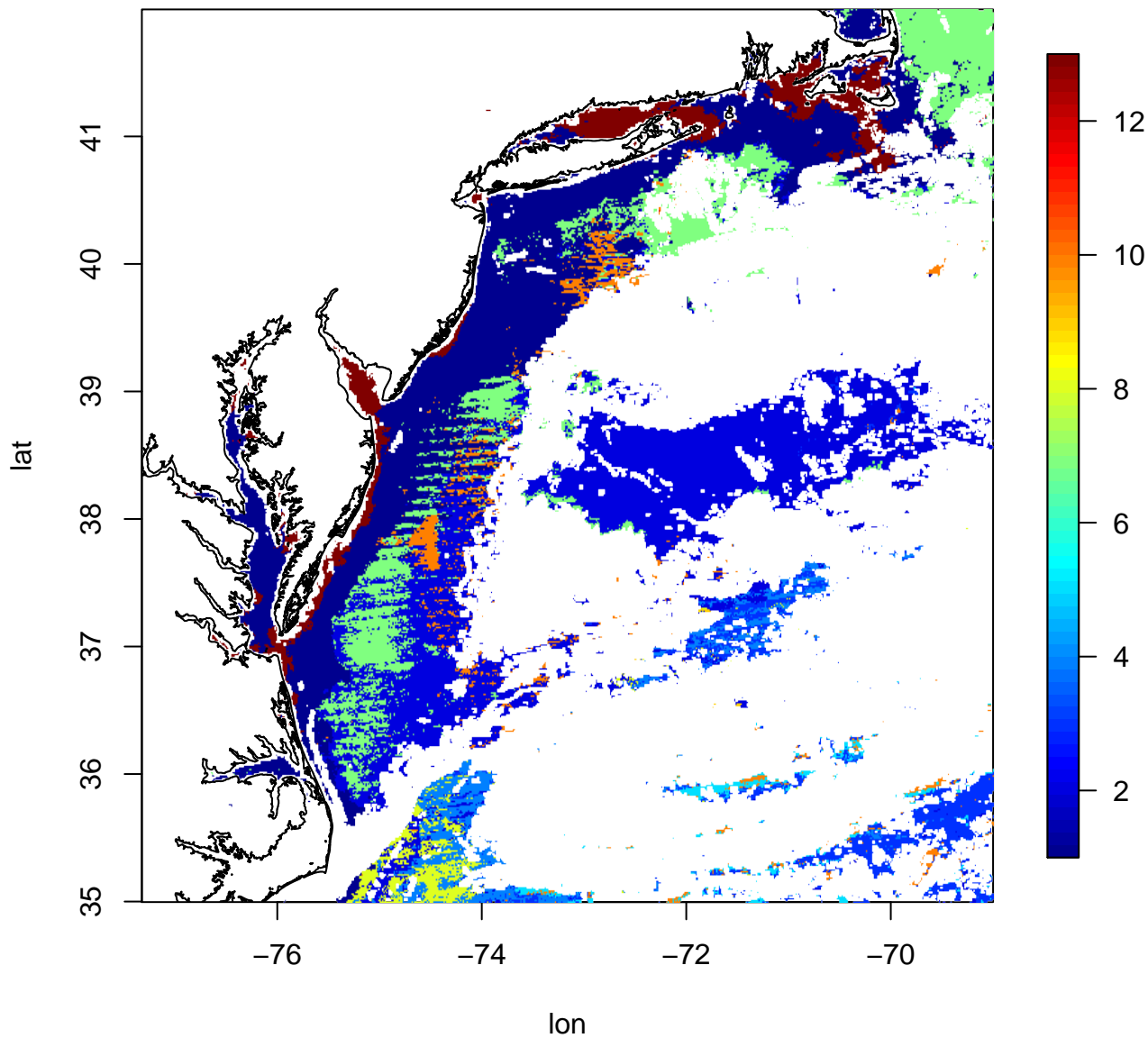
EDA_CHLA
Chlorophyll-a



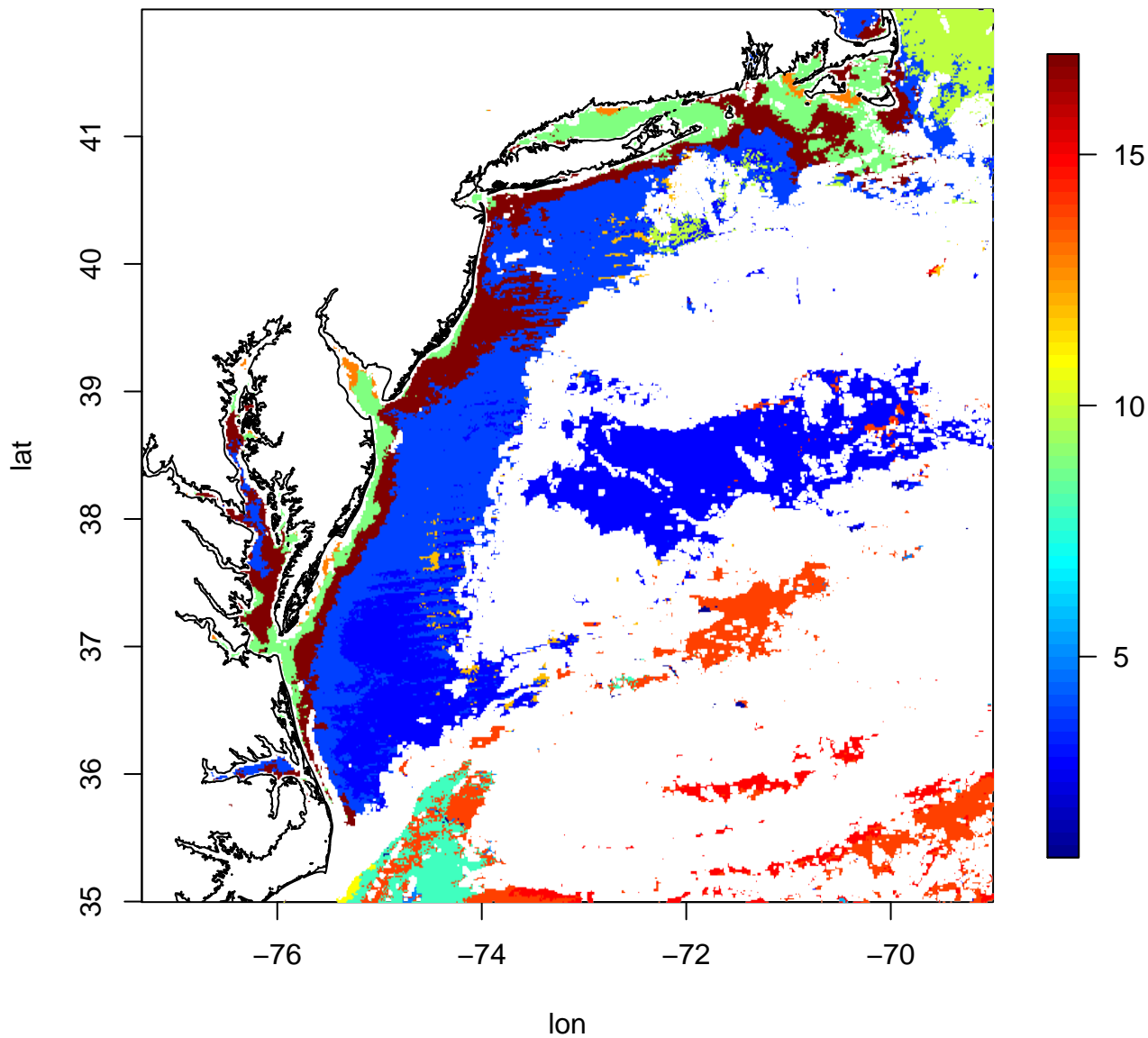
EDA_SST
Sea surface temperature



EDA_WC Ward's Classification

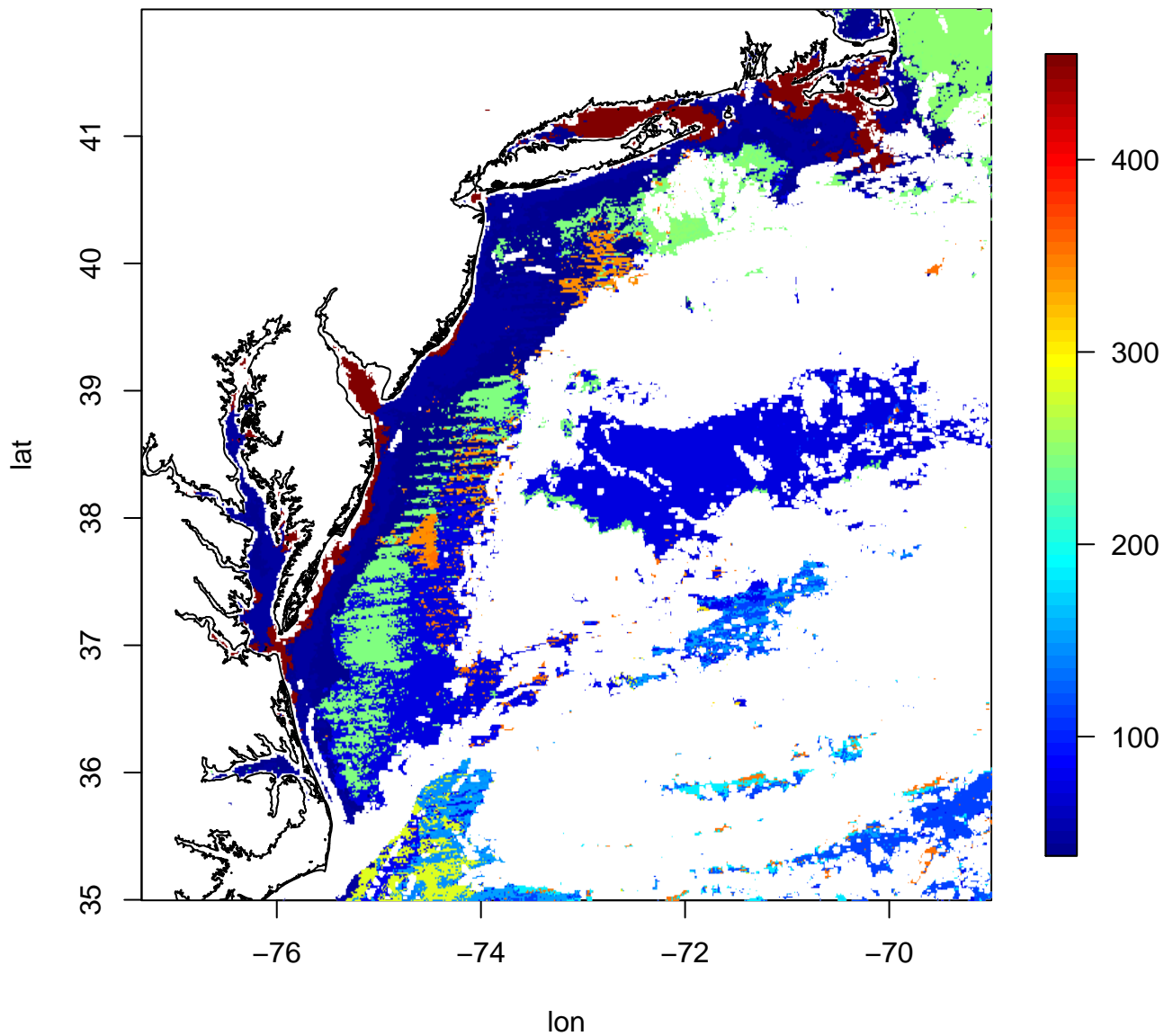


EDA_KC K-means Classification

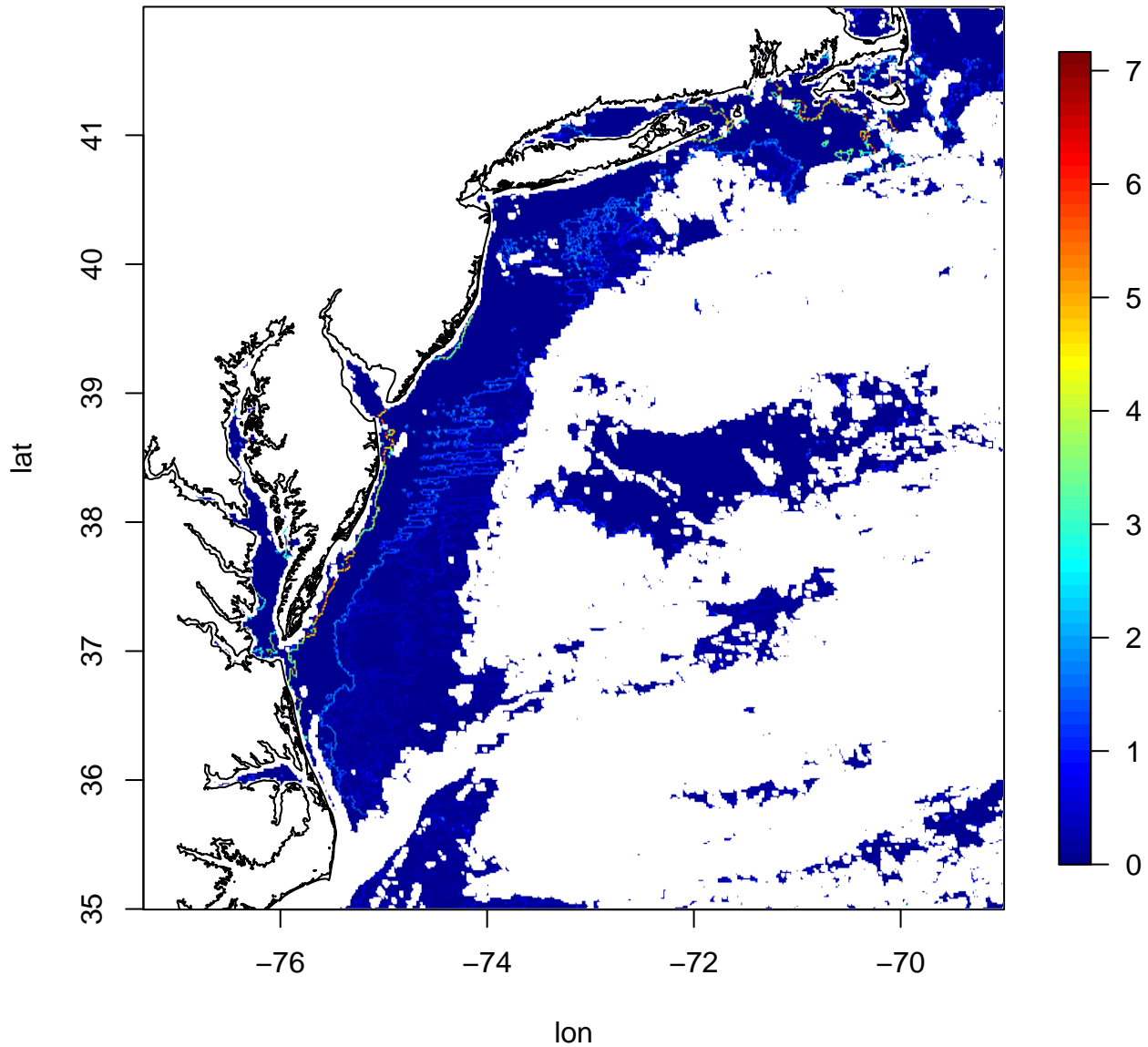


EDA_WKC

Combined Wards and K-means Classification

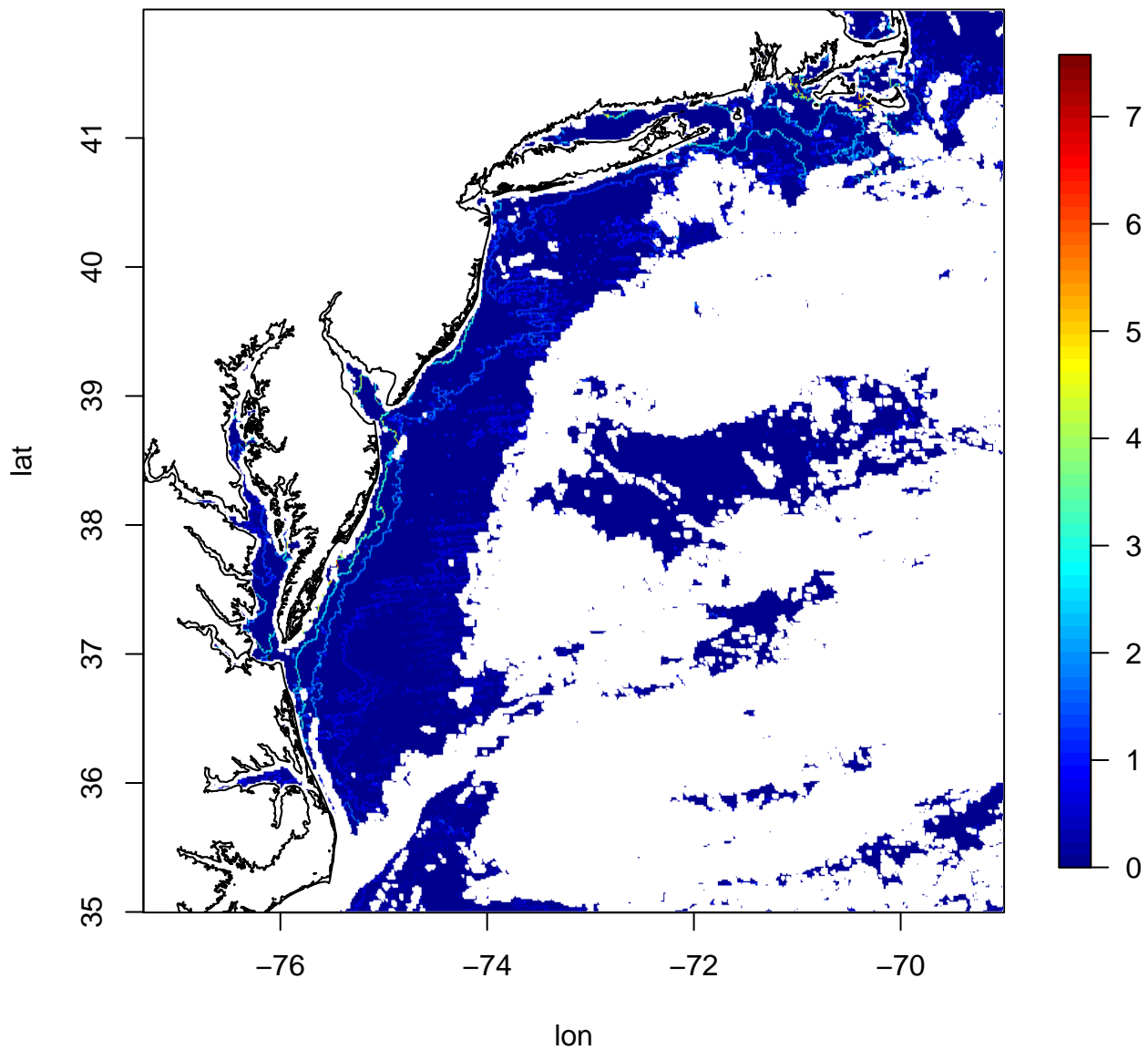


EDA_WG
Gradient Strength for Ward's Classification



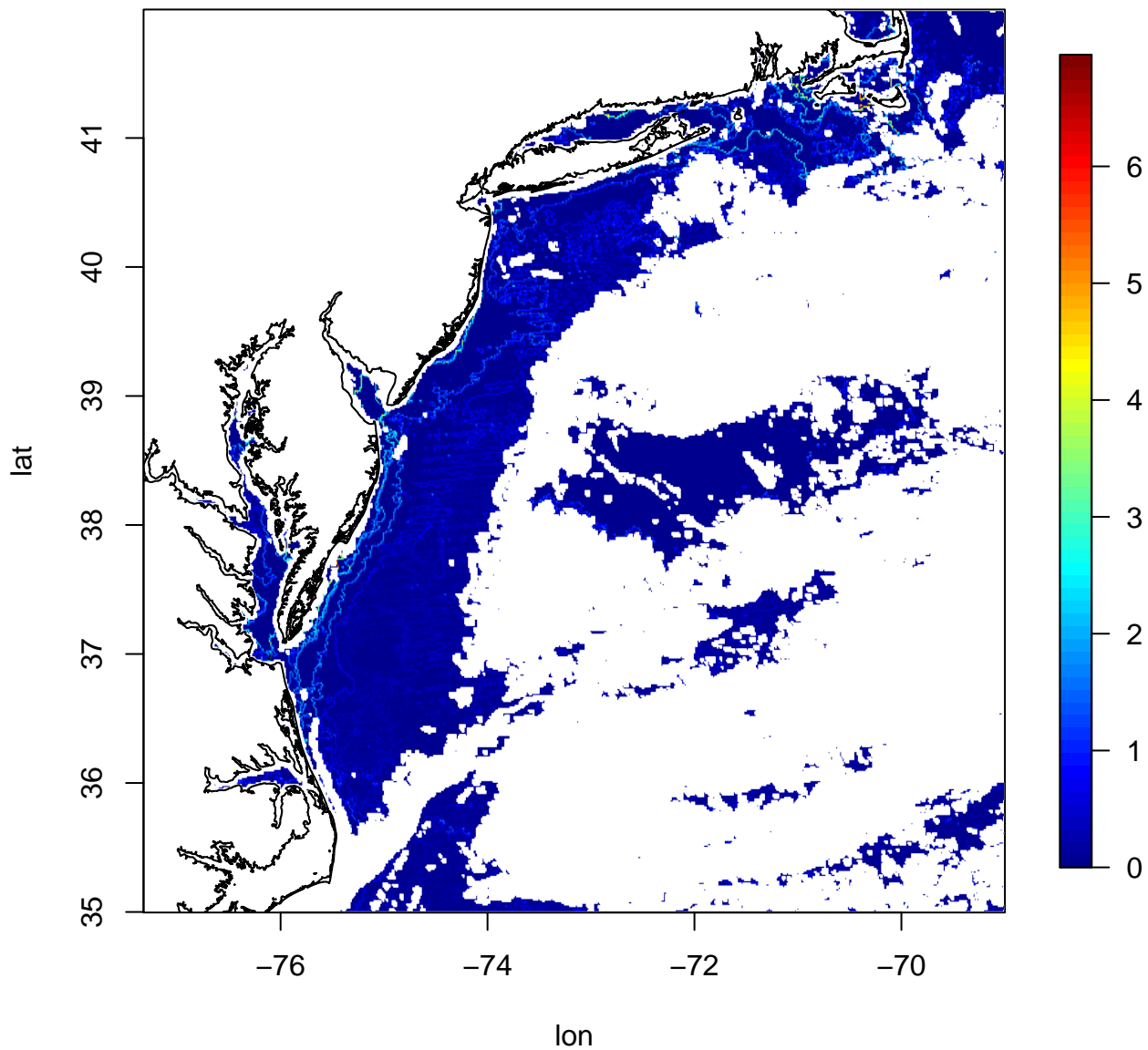
EDA_KG

Gradient Strength for K-means Classification

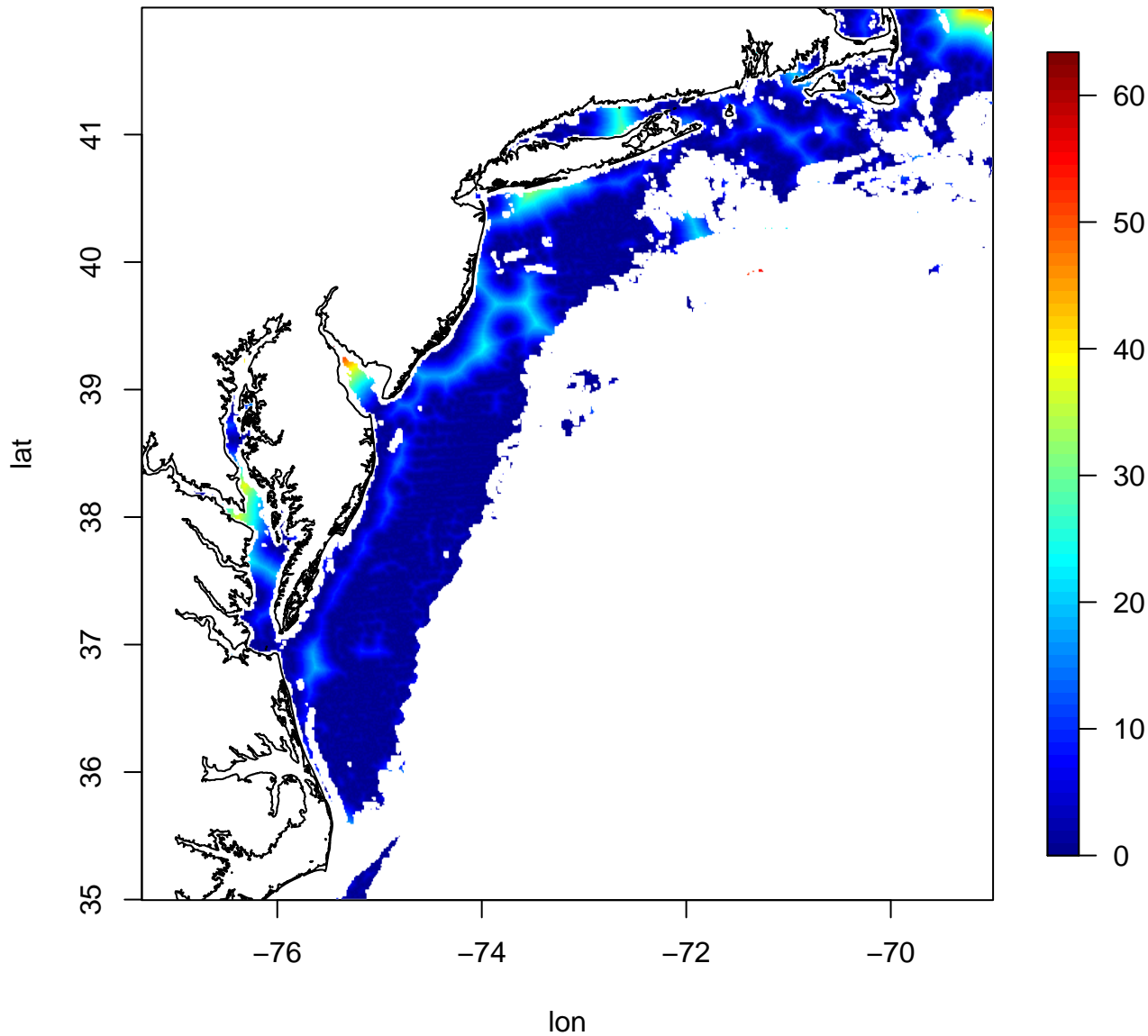


EDA_WKG

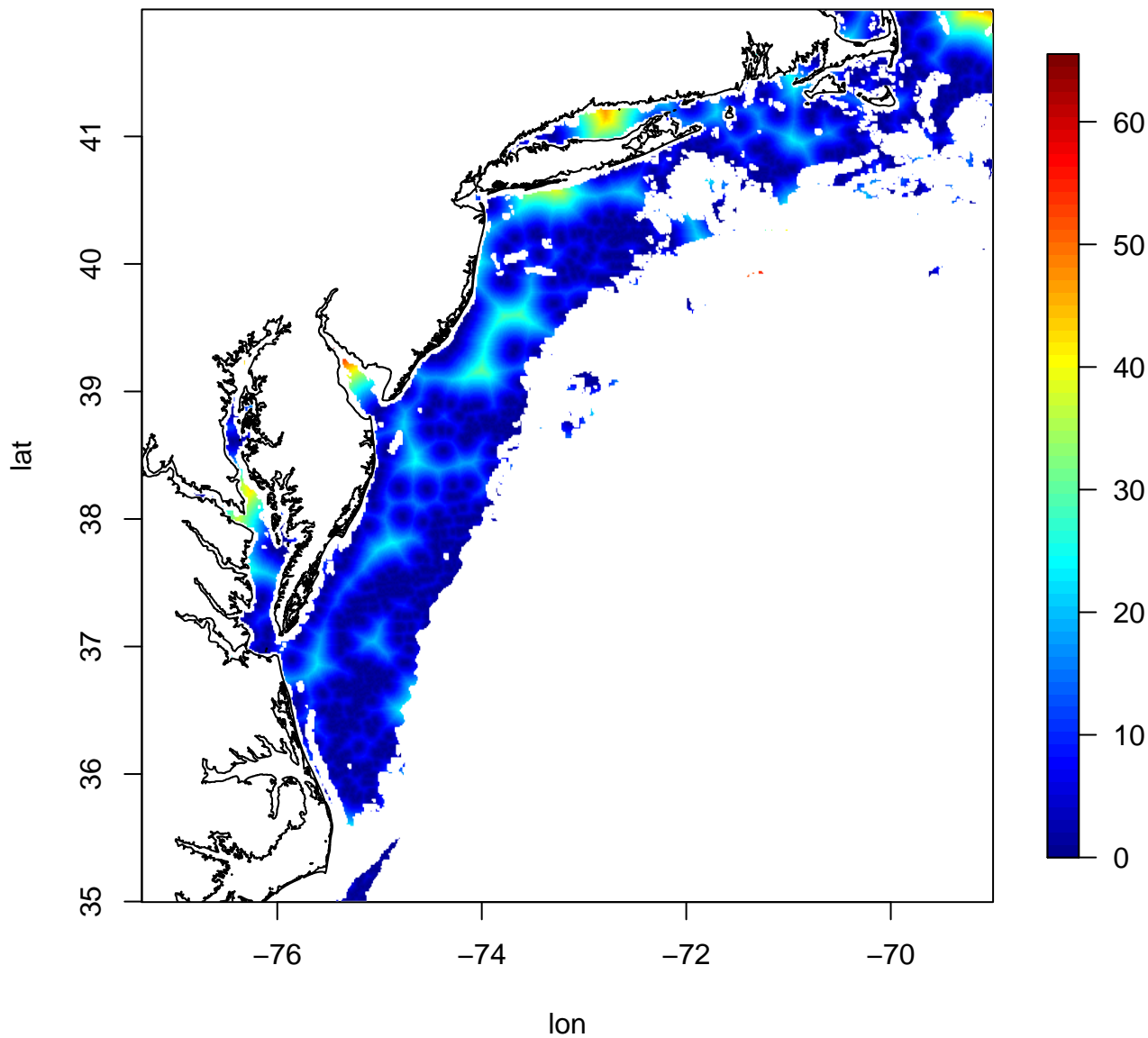
Gradient Strength for Combined Wards and K-means Classification



EDA_WG_dist
Minimum distance to gradient for Ward's Classification

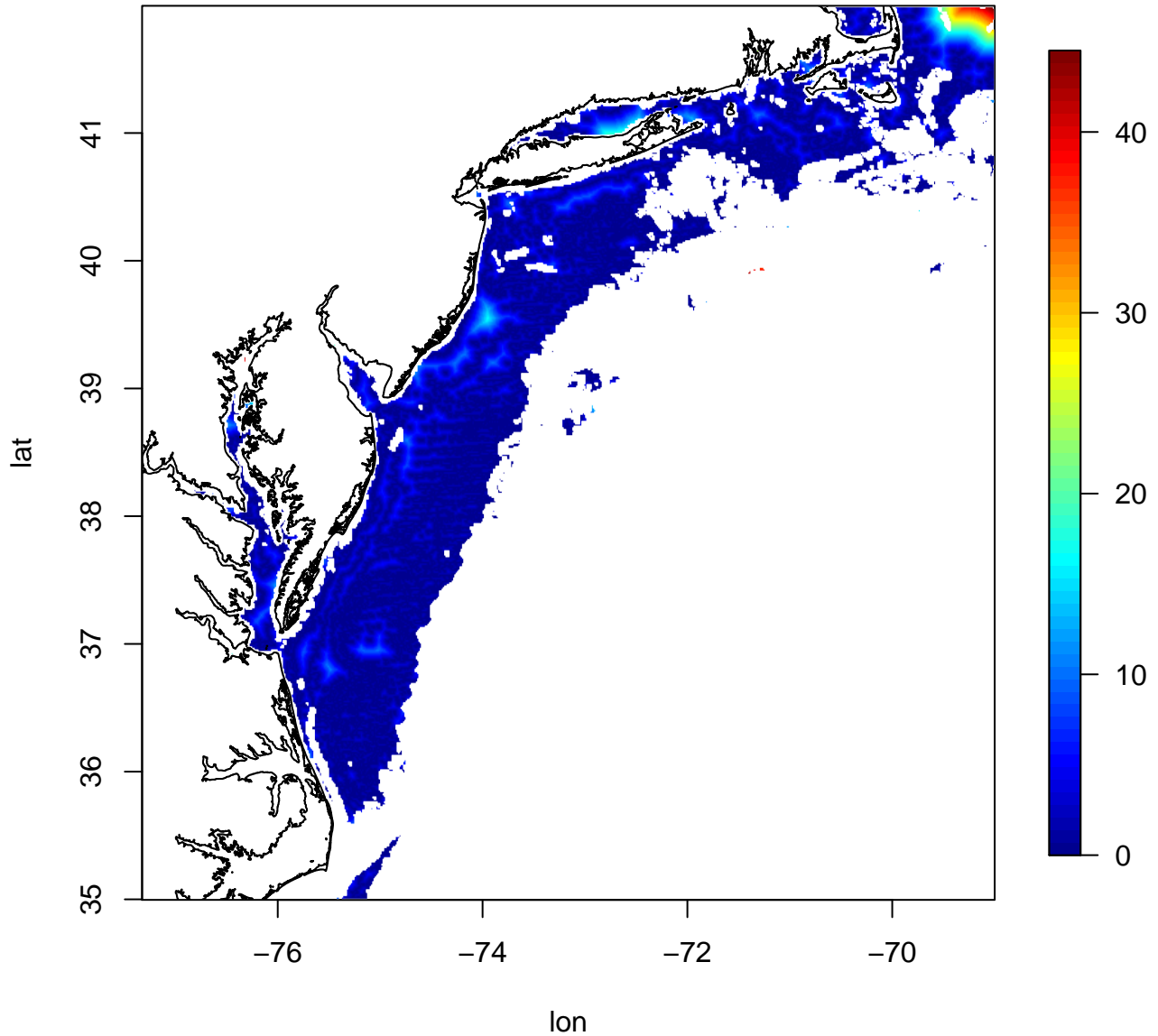


EDA_KG_dist
Minimum distance to gradient for K-means Classification

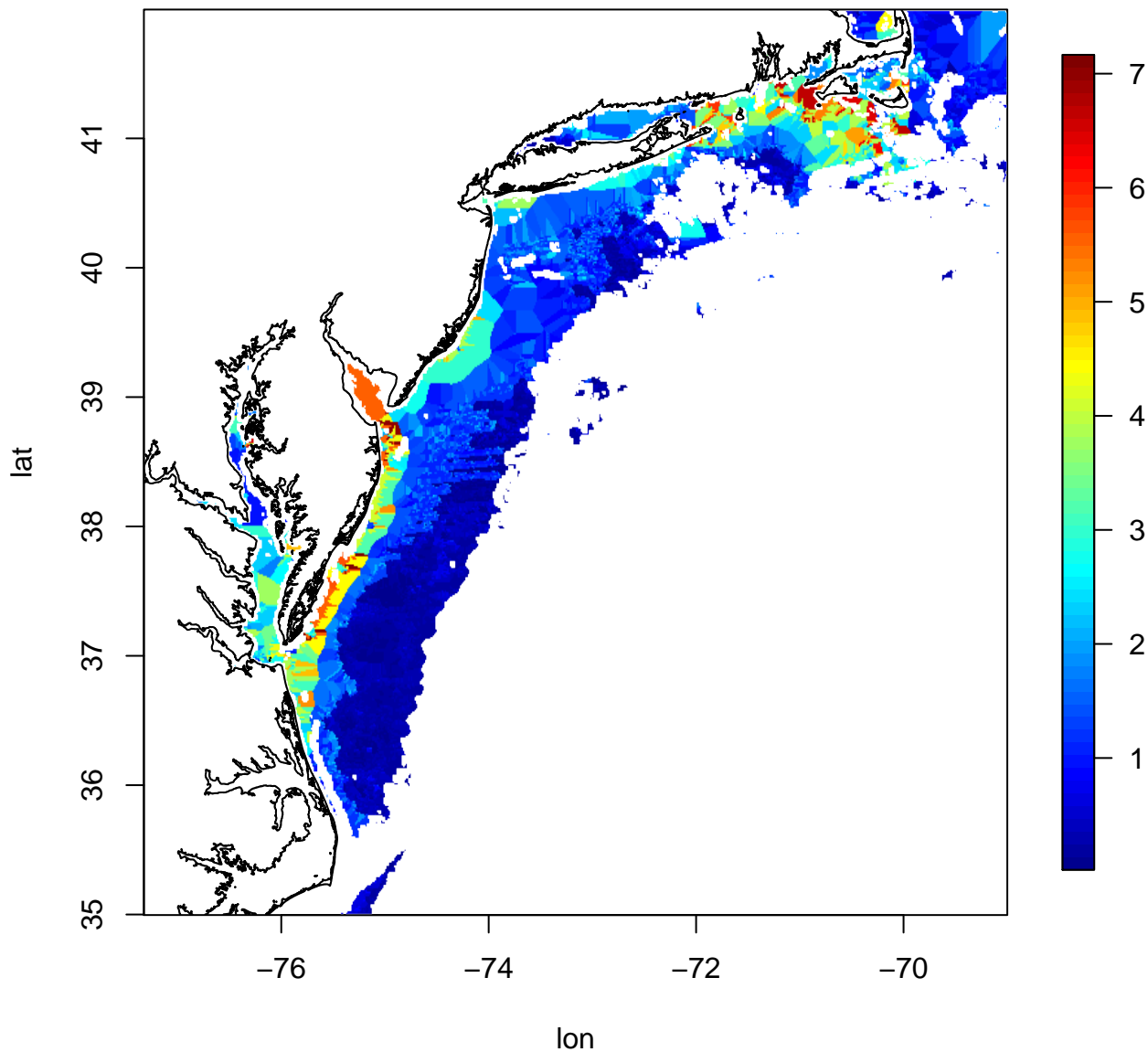


EDA_WKG_dist

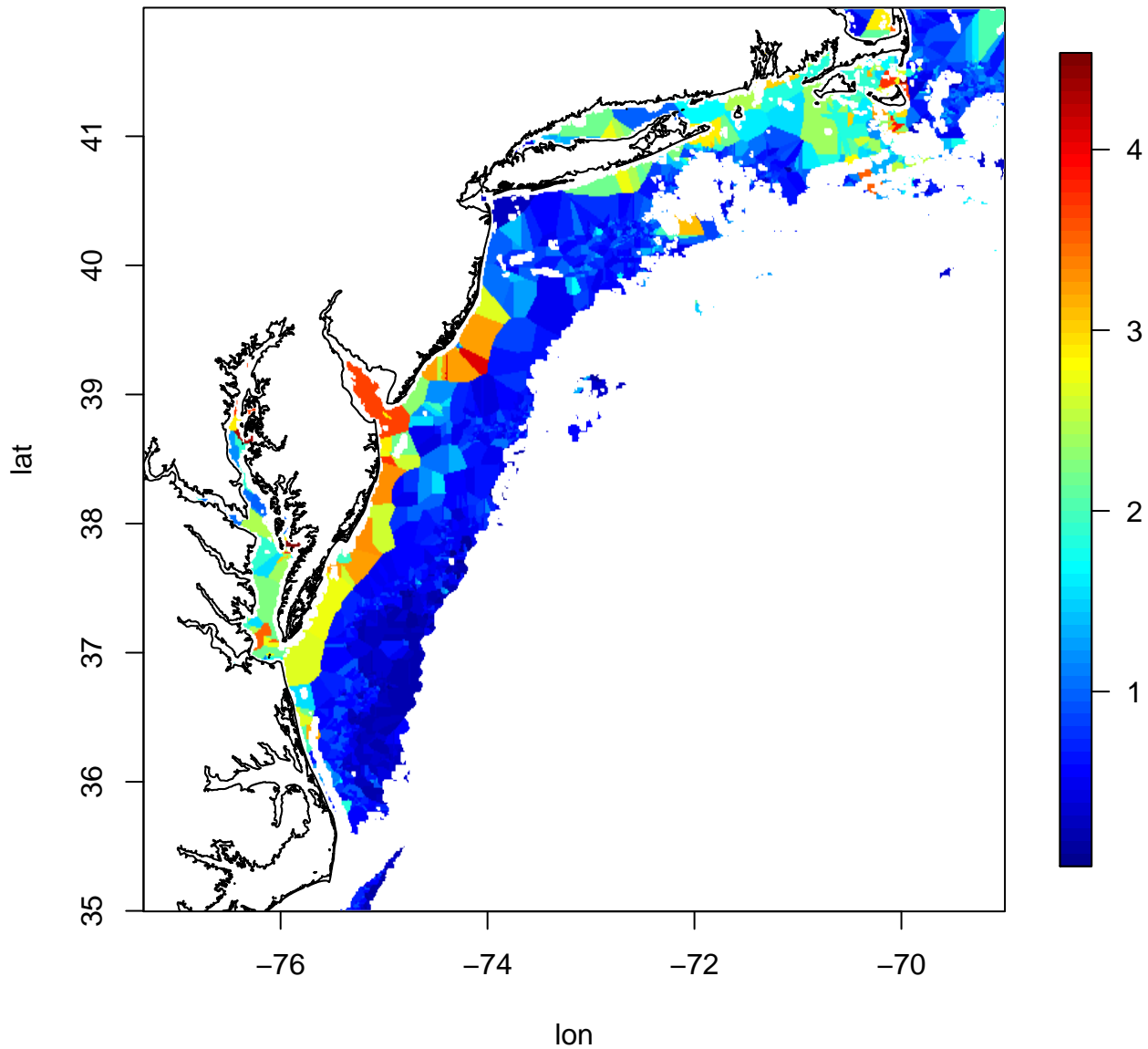
Minimum distance to gradient for Combined Wards and K-means Classification



EDA_WG_dist_gs
Gradient Strength for closest gradient for Ward's Classification

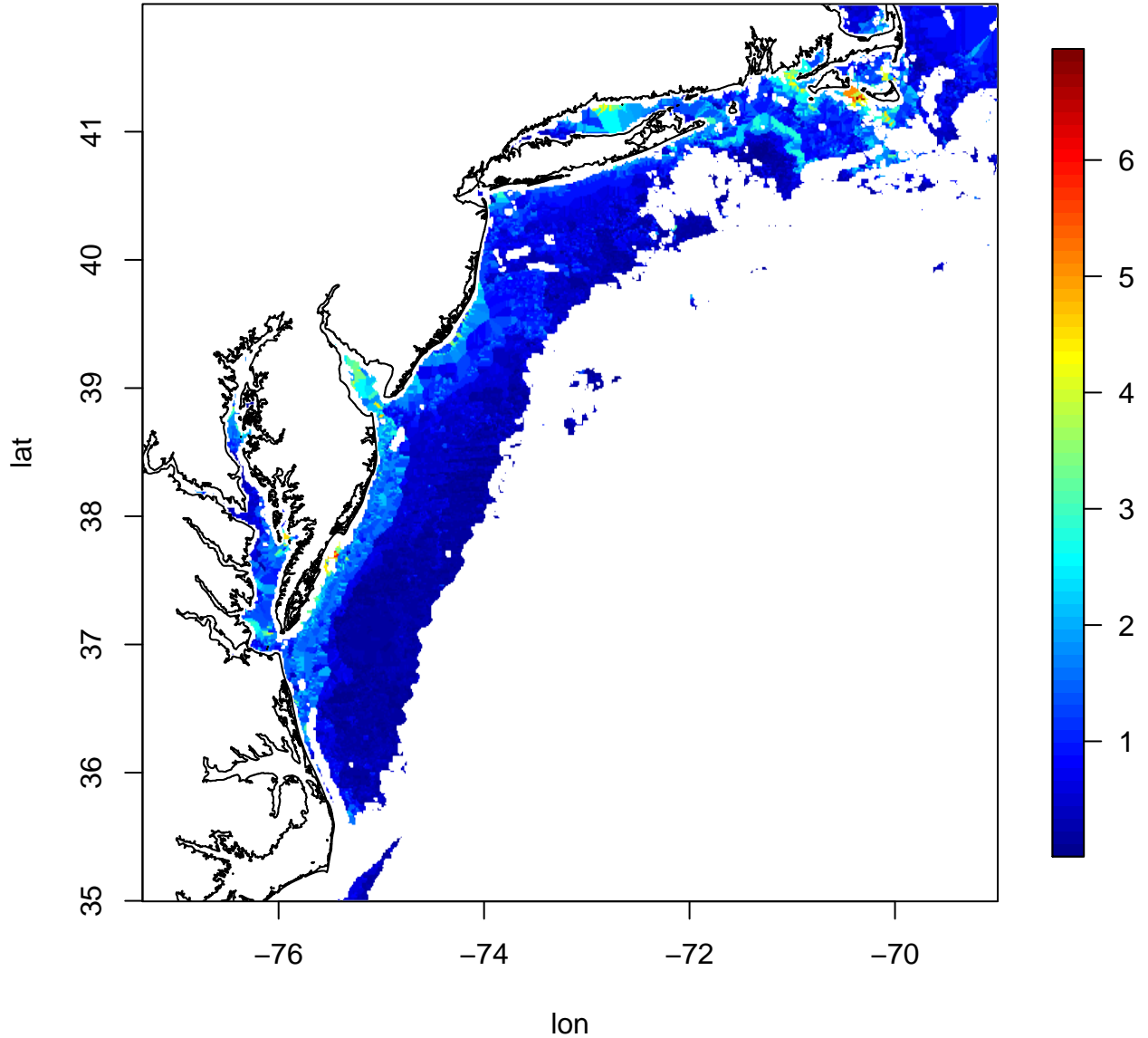


EDA_KG_dist_gs
Gradient Strength for closest gradient for K-means Classification

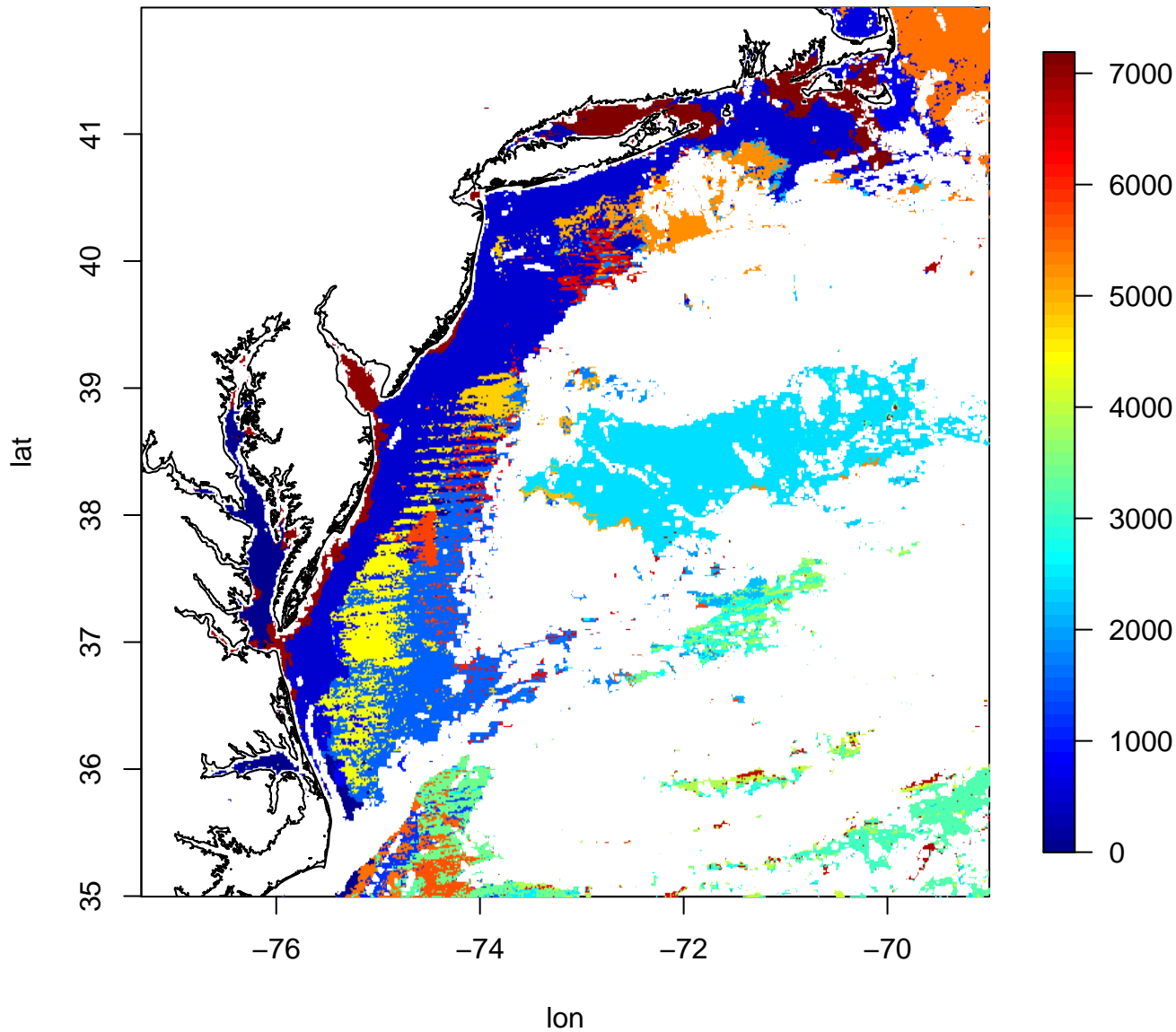


EDA_WKG_dist_gs

Gradient Strength for closest gradient for Combined Wards and K-means Classification

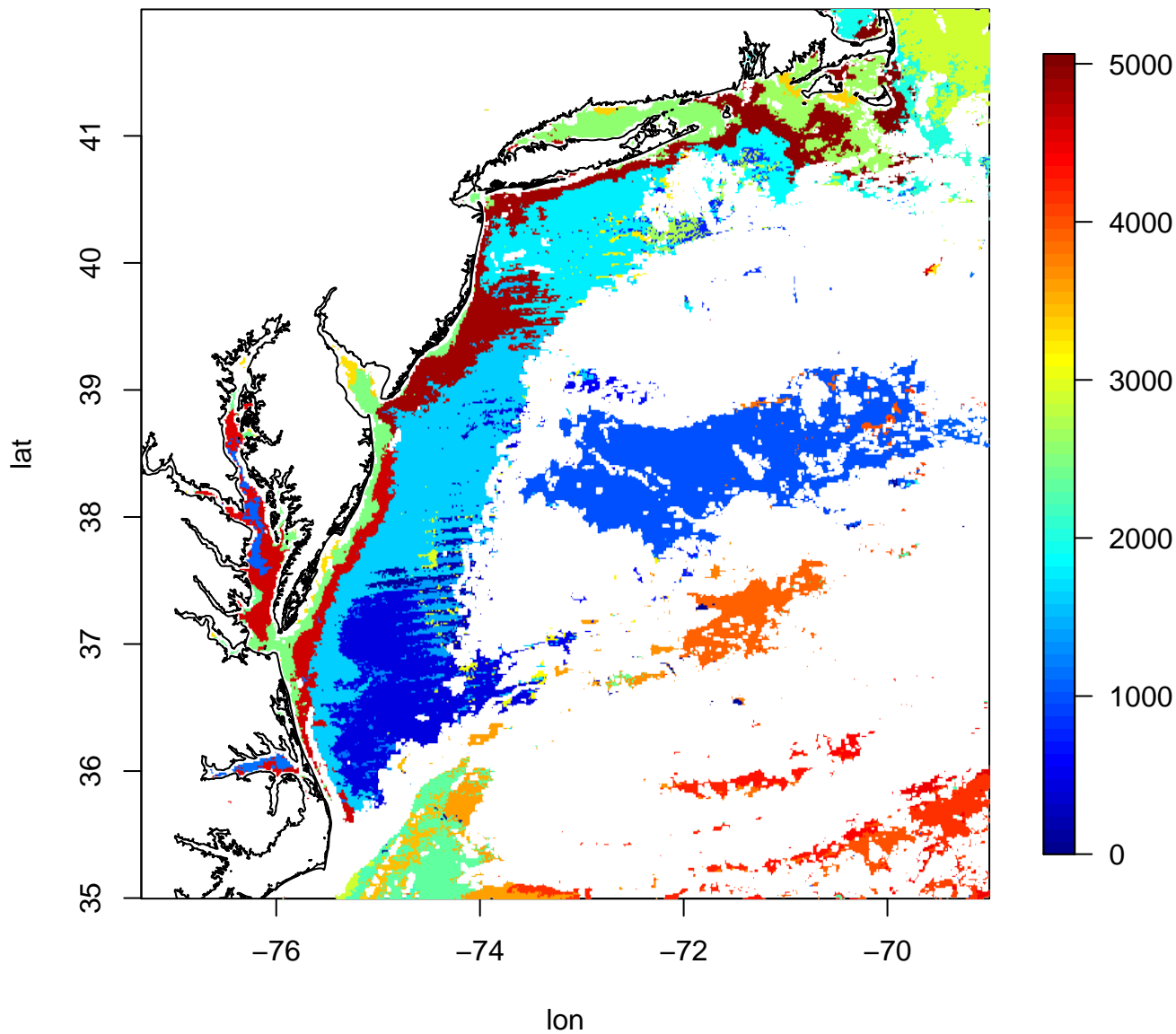


EDA_W_stamp
StampID for Ward's Clustering



EDA_K_stamp

StampID for K-Means Clustering



EDA_WK_stamp

StampID for Combined Wards and K-means Classification

