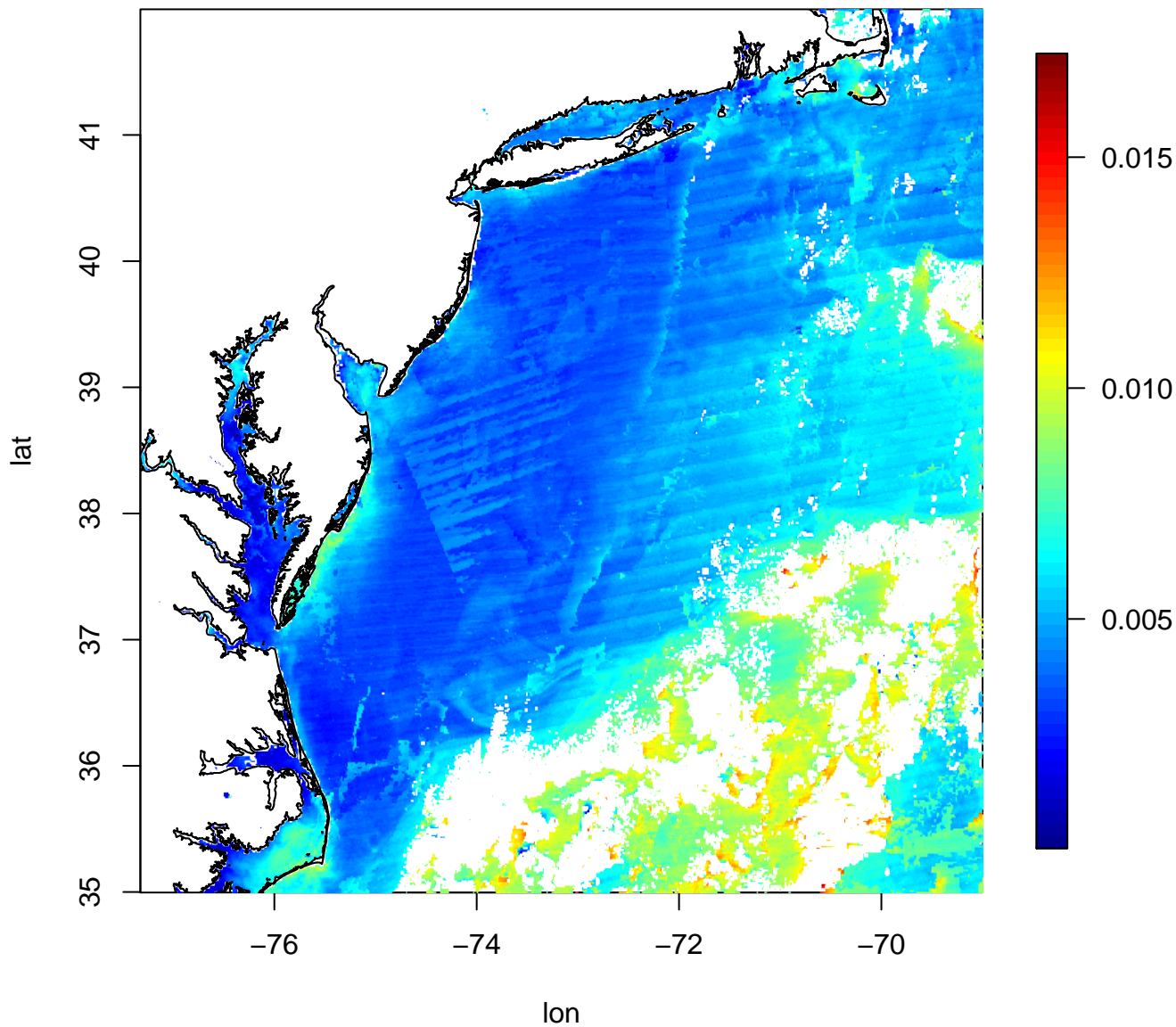
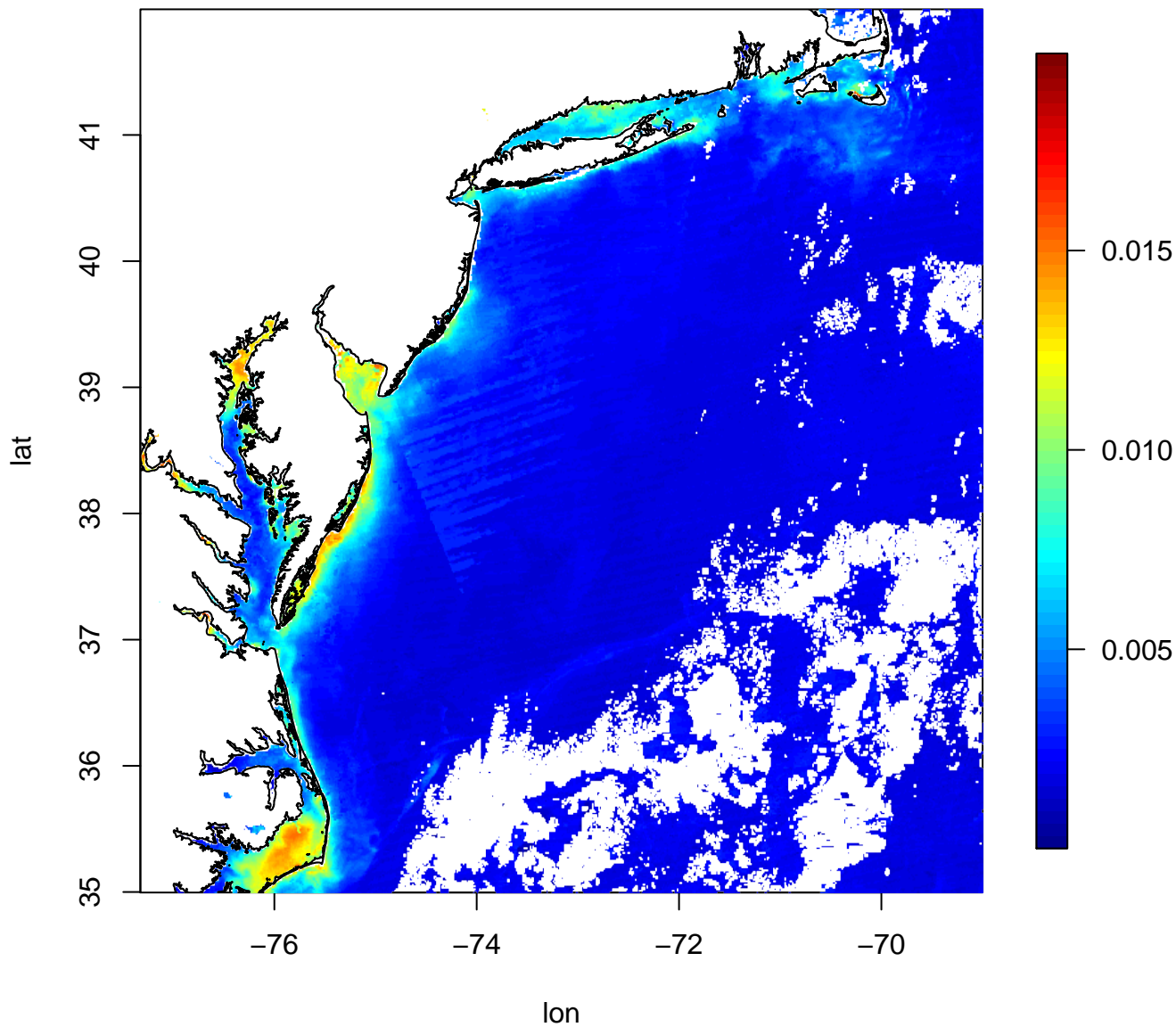


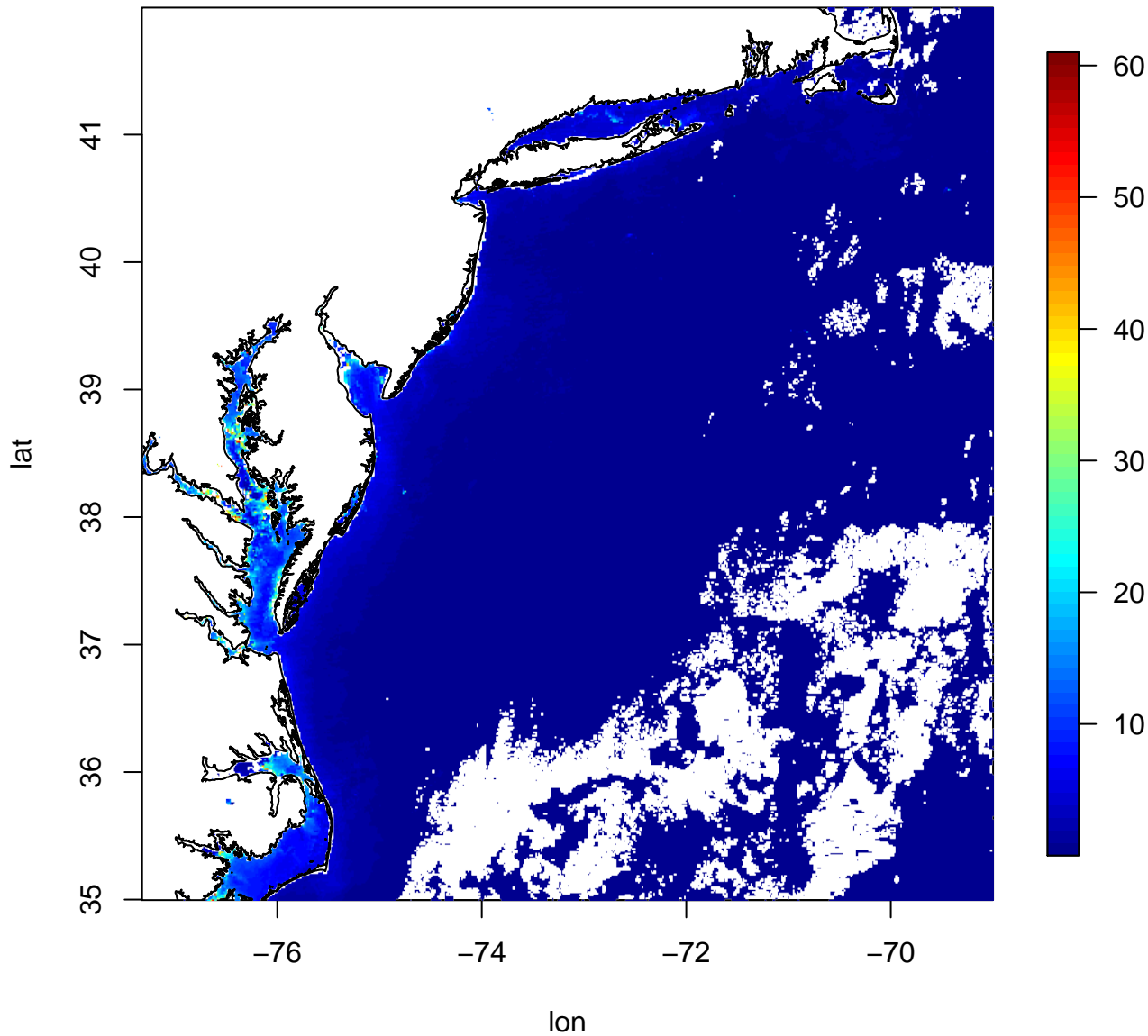
EDA\_Rrs\_443  
Remote sensing reflectance at 443 nm



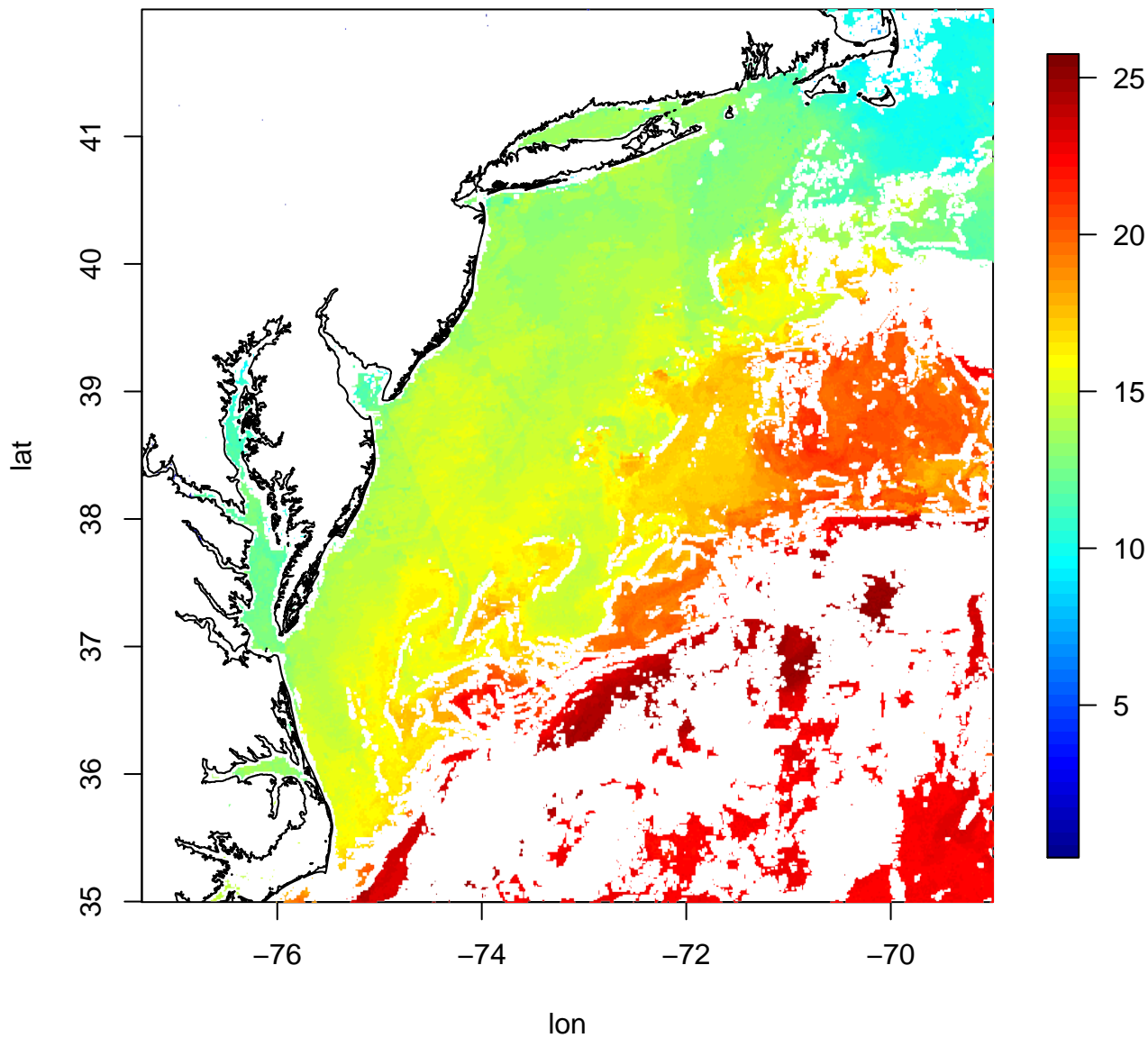
EDA\_Rrs\_555  
Remote sensing reflectance at 555 nm



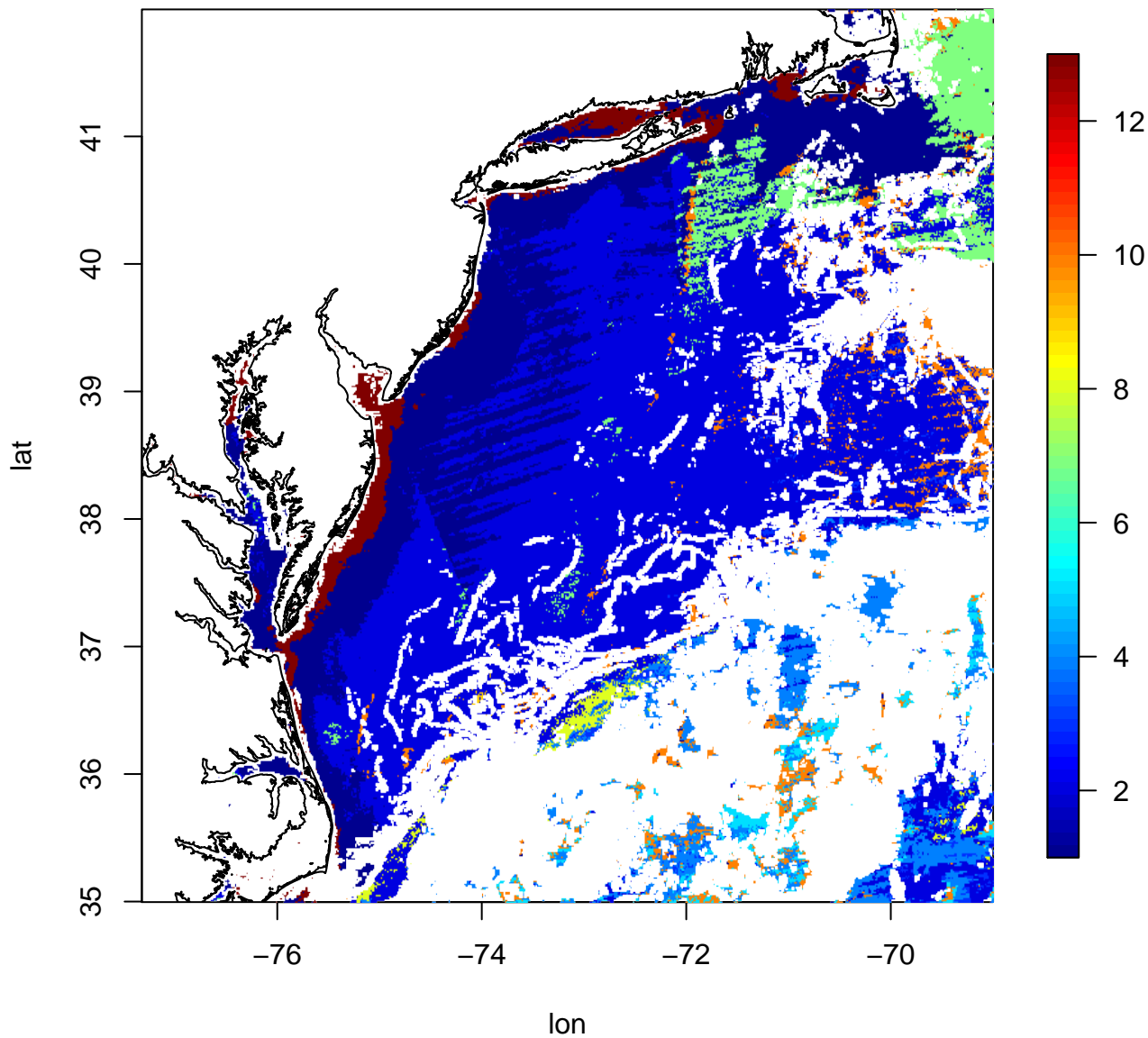
EDA\_CHLA  
Chlorophyll-a



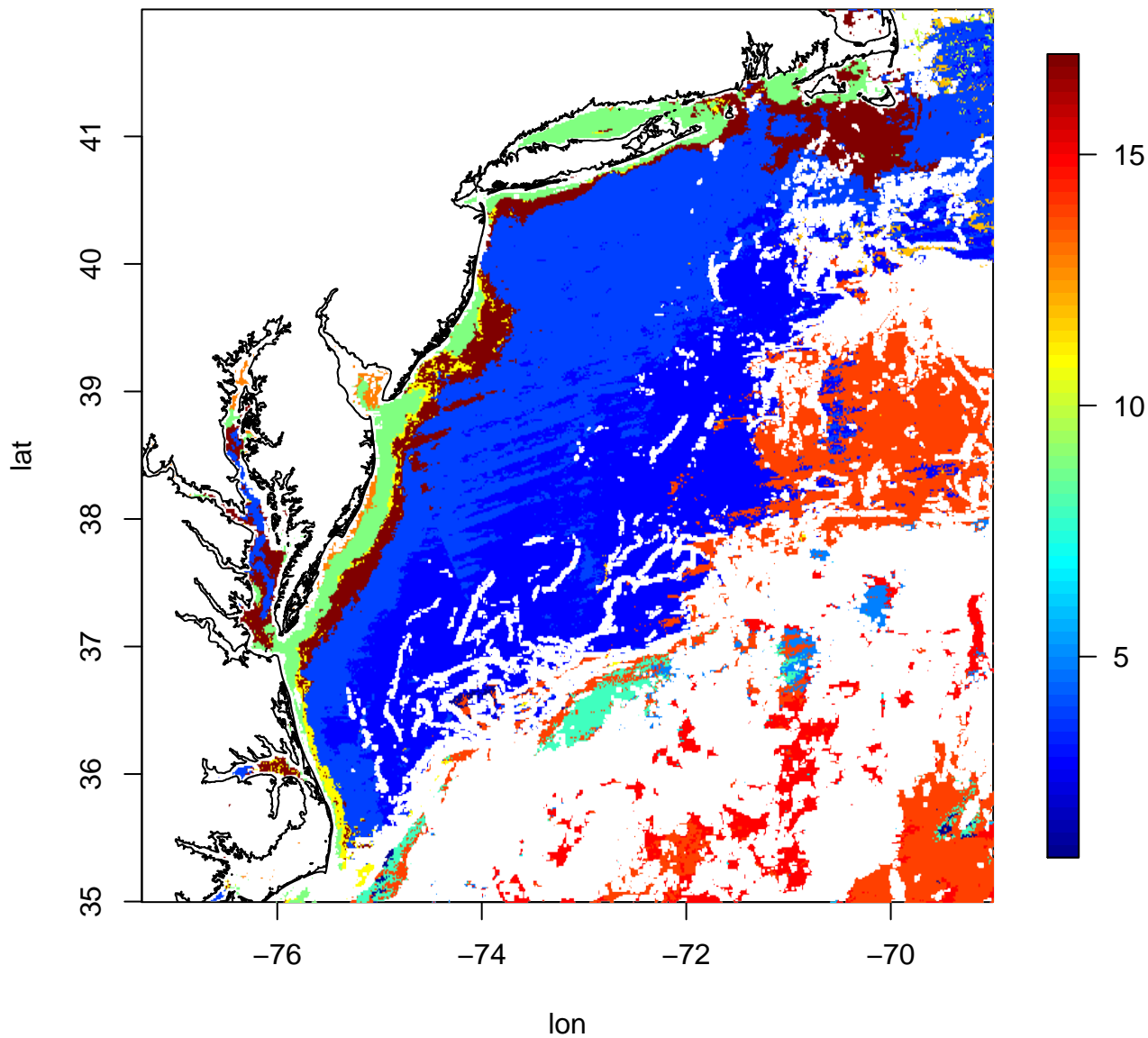
EDA\_SST  
Sea surface temperature



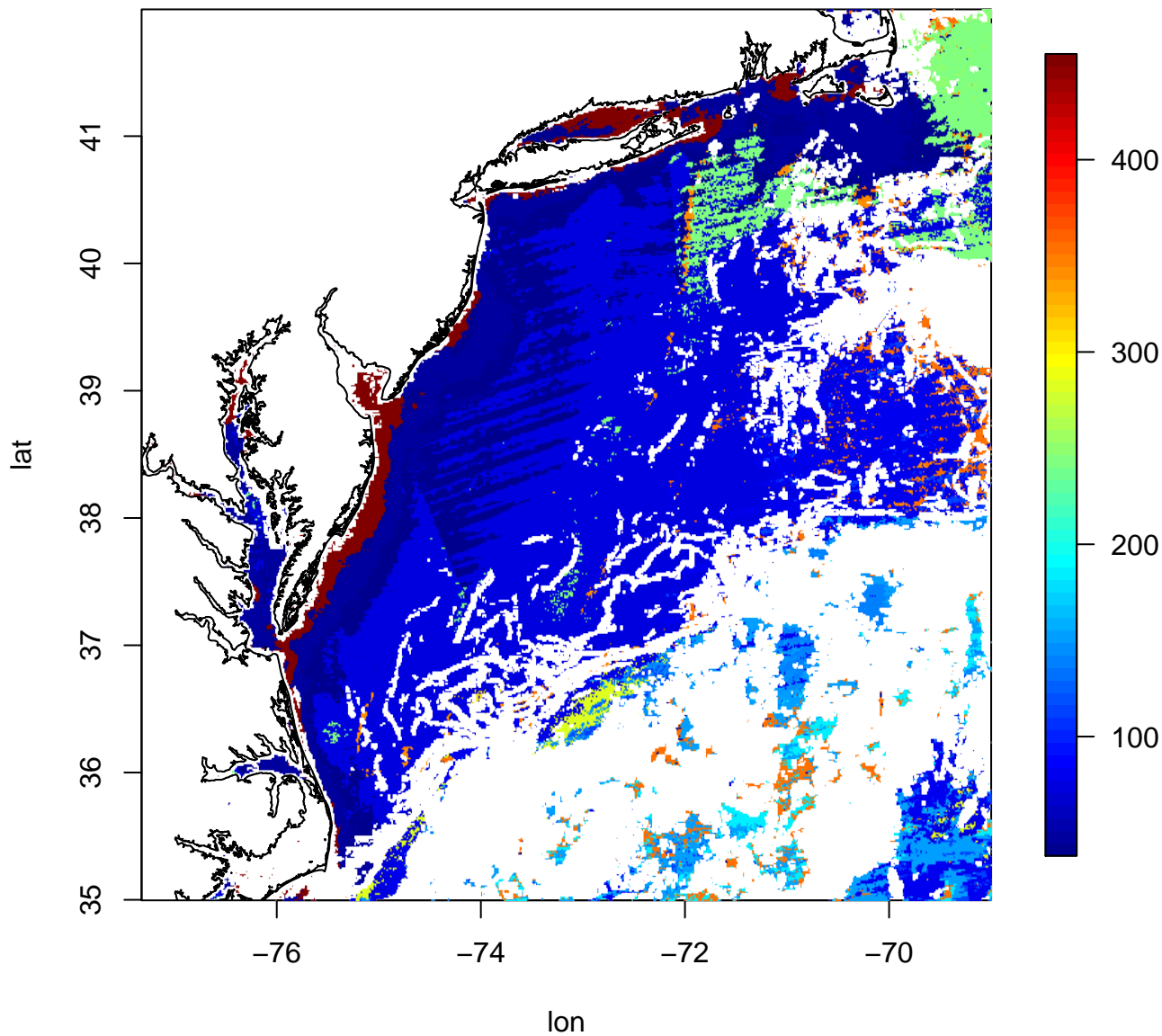
# EDA\_WC Ward's Classification



# EDA\_KC K-means Classification

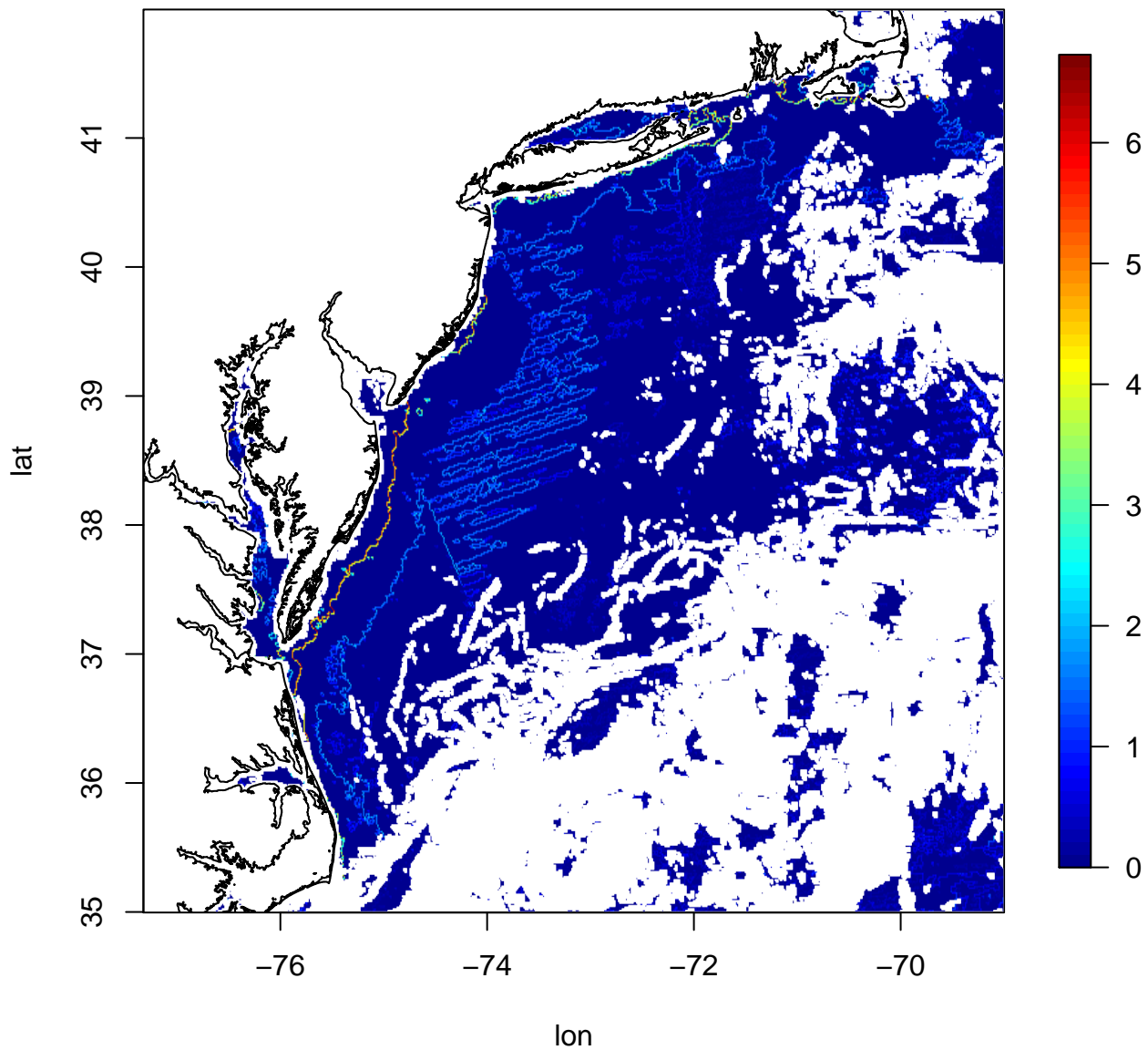


# EDA\_WKC Combined Wards and K-means Classification



# EDA\_WG

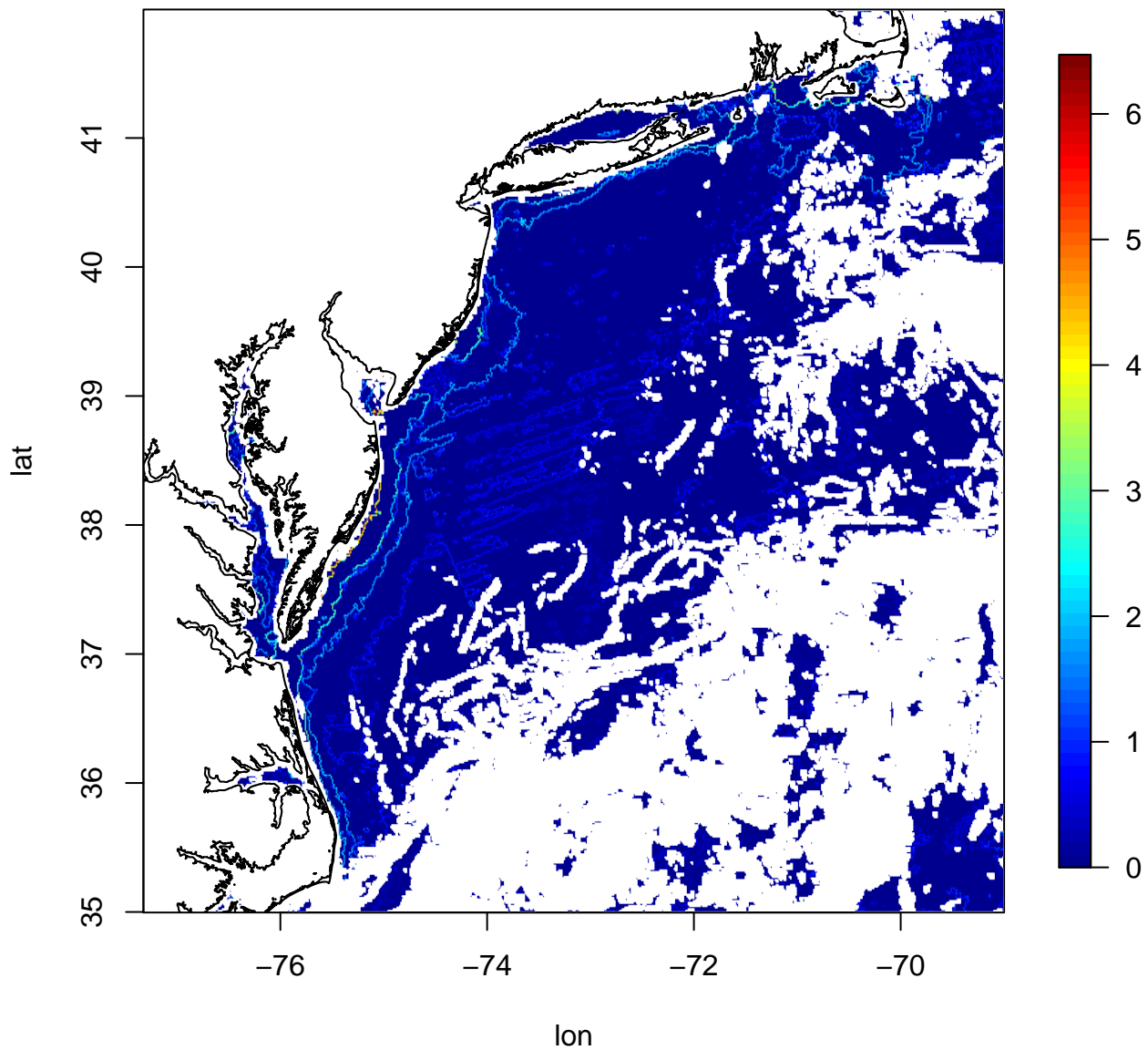
## Gradient Strength for Ward's Classification





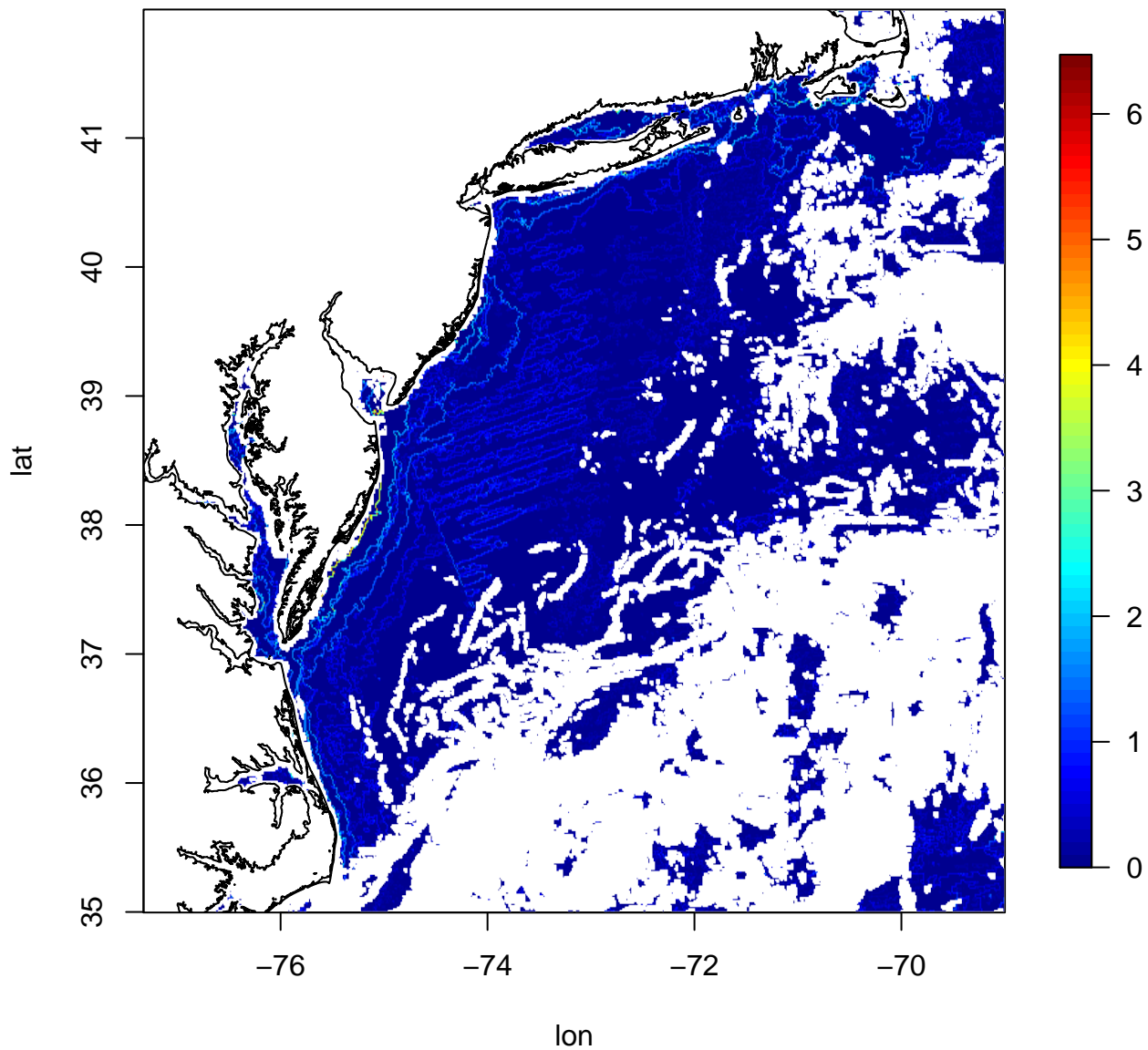
# EDA\_KG

## Gradient Strength for K-means Classification

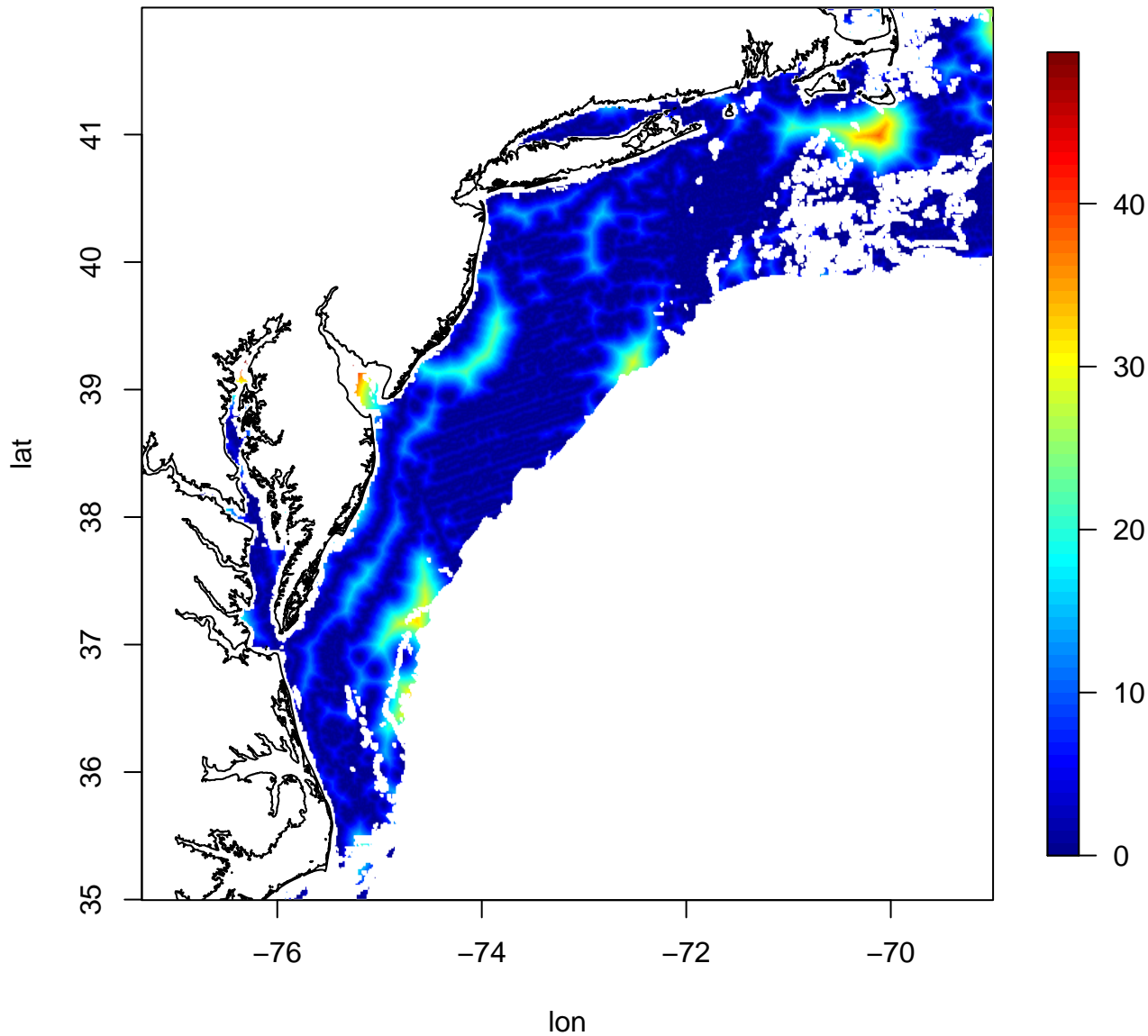


# EDA\_WKG

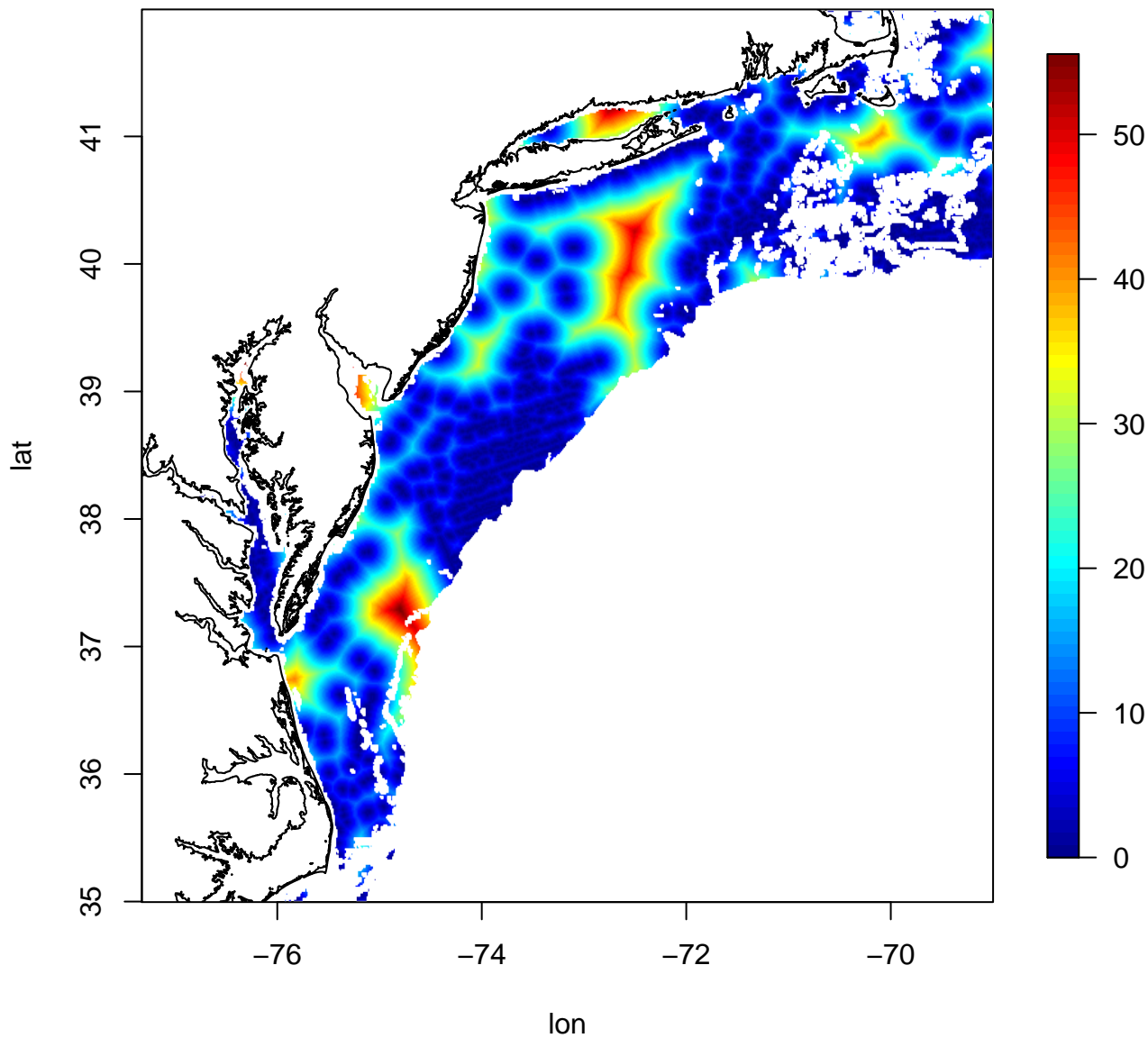
## Gradient Strength for Combined Wards and K-means Classification



EDA\_WG\_dist  
Minimum distance to gradient for Ward's Classification

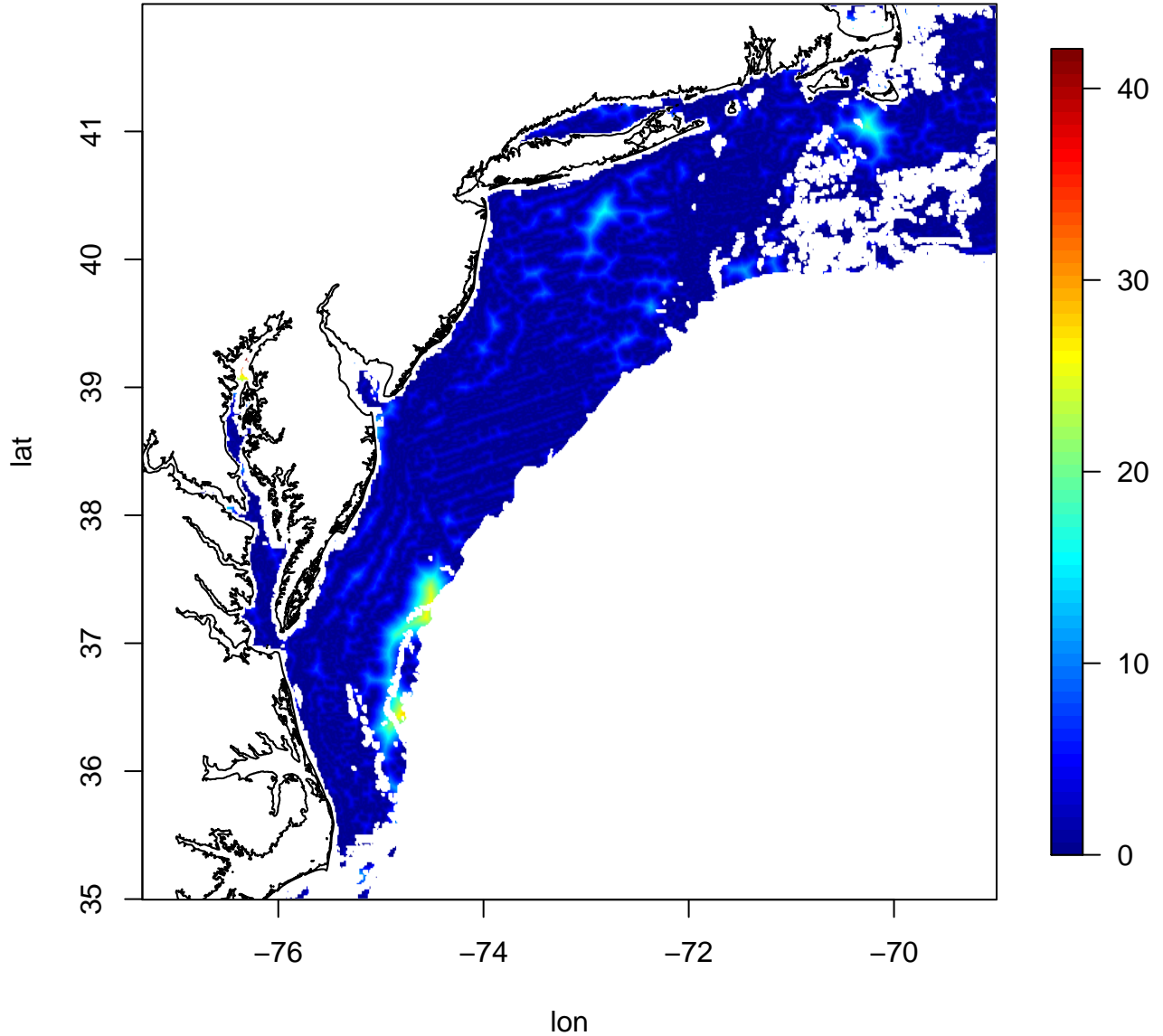


EDA\_KG\_dist  
Minimum distance to gradient for K-means Classification

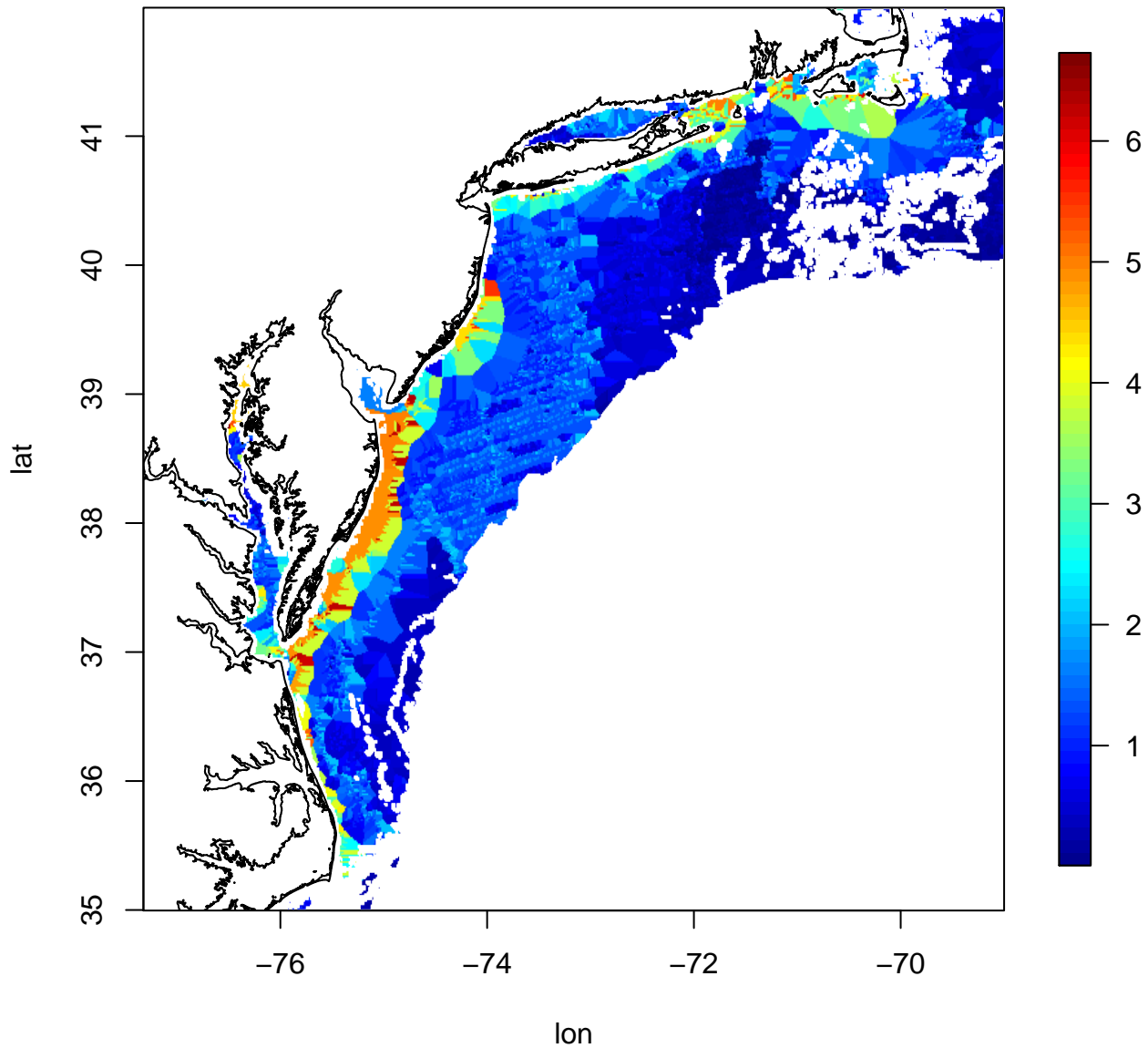


# EDA\_WKG\_dist

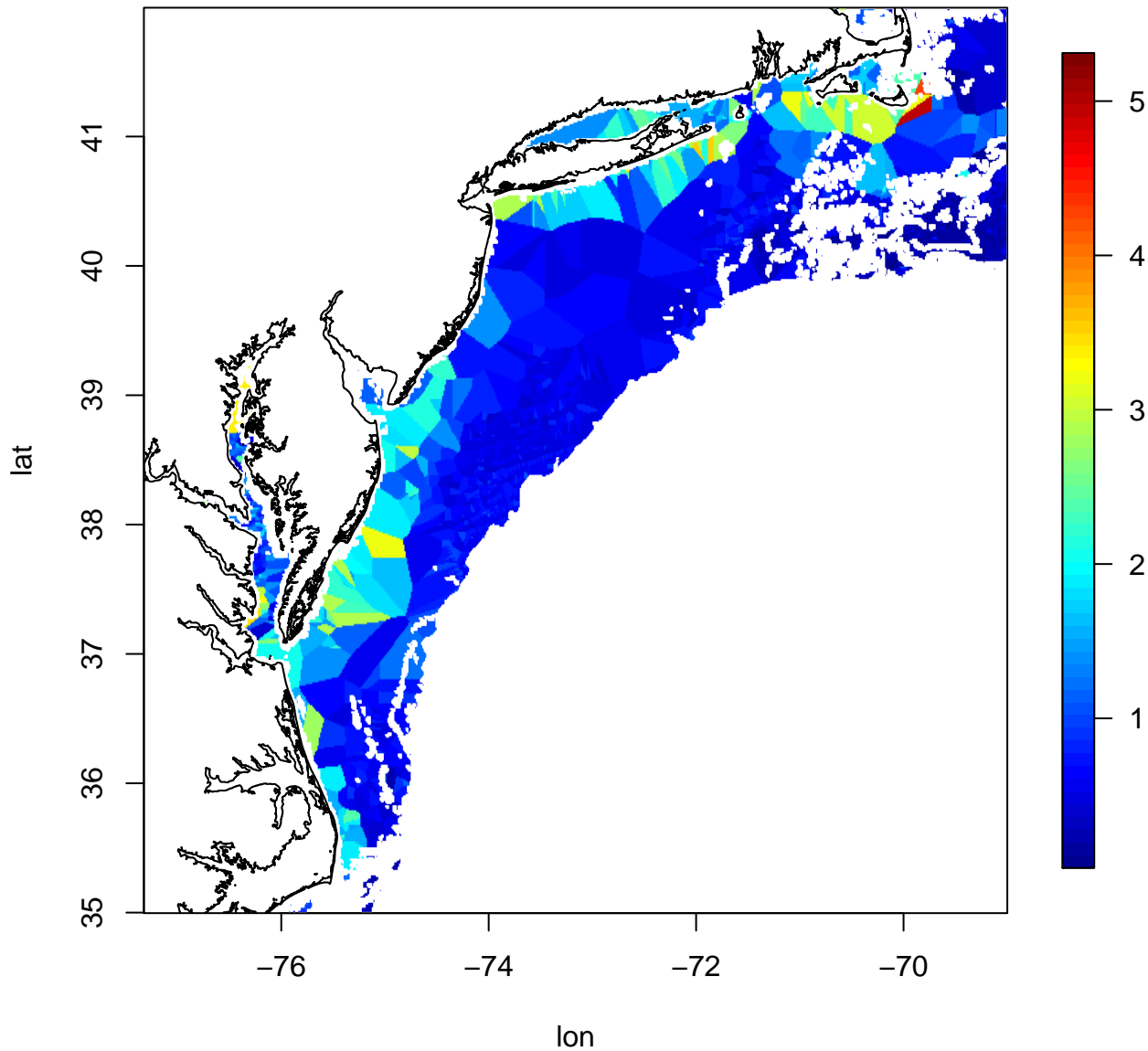
Minimum distance to gradient for Combined Wards and K-means Classification



EDA\_WG\_dist\_gs  
Gradient Strength for closest gradient for Ward's Classification

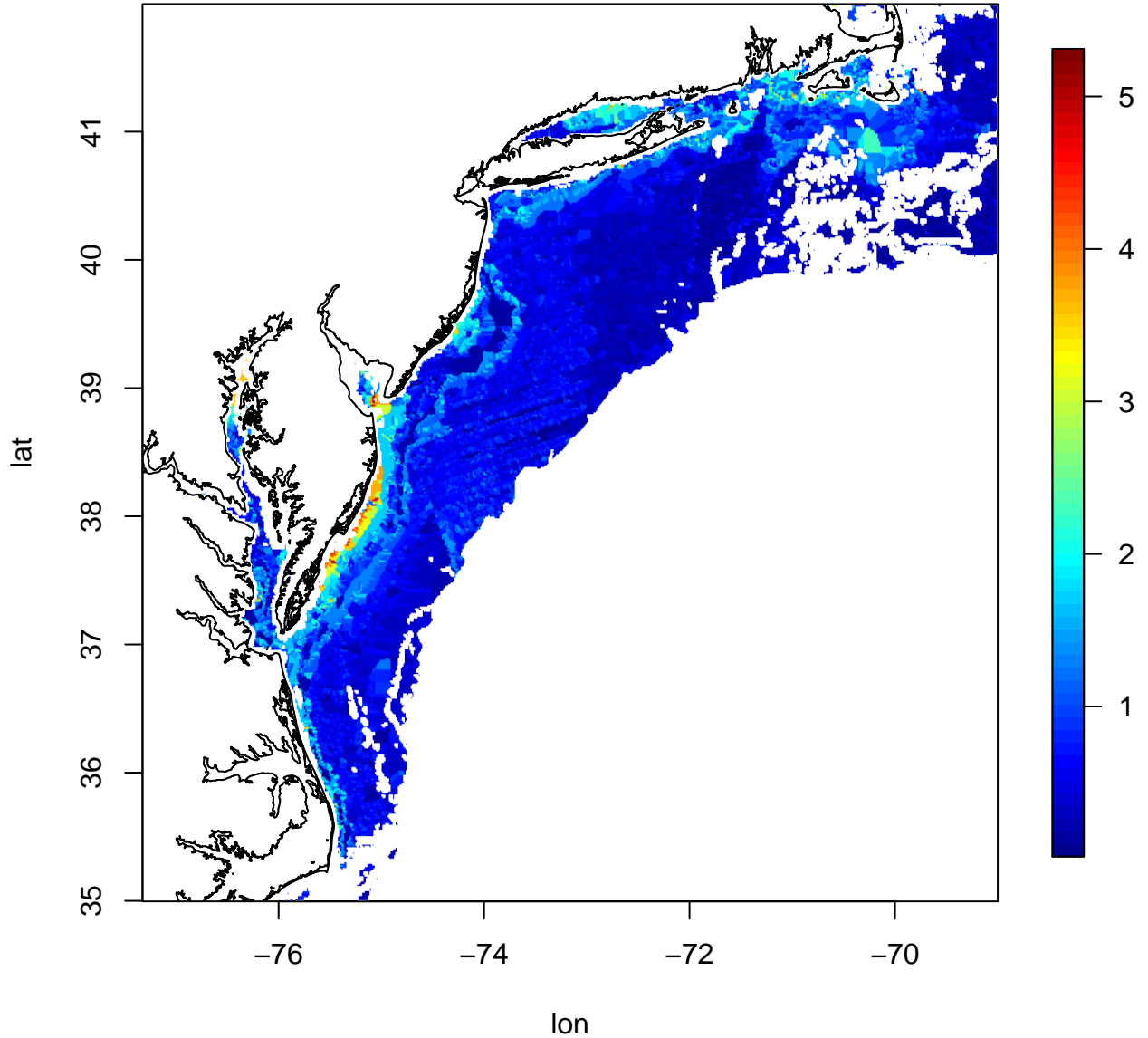


EDA\_KG\_dist\_gs  
Gradient Strength for closest gradient for K-means Classification



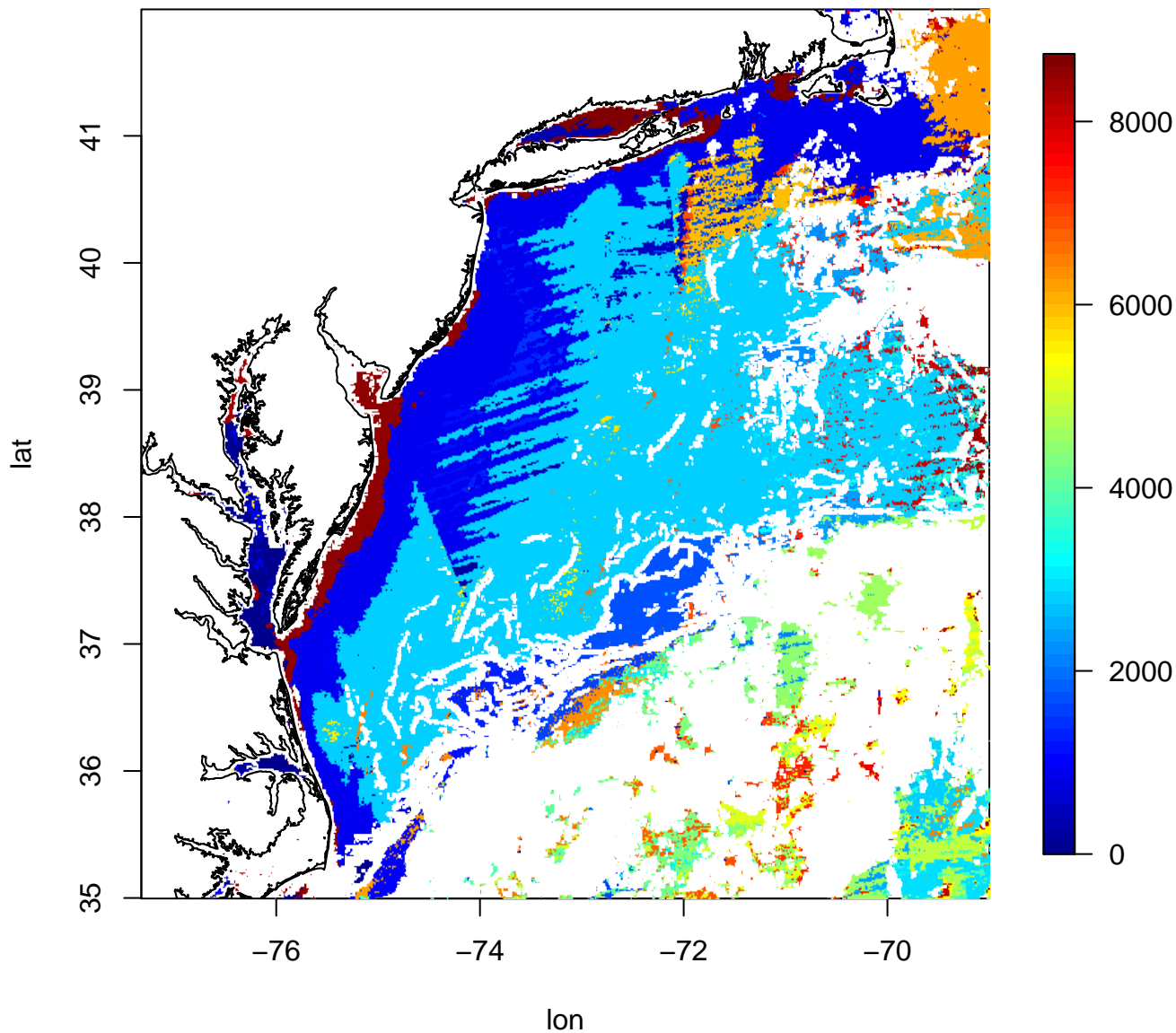
# EDA\_WKG\_dist\_gs

Gradient Strength for closest gradient for Combined Wards and K-means Classification



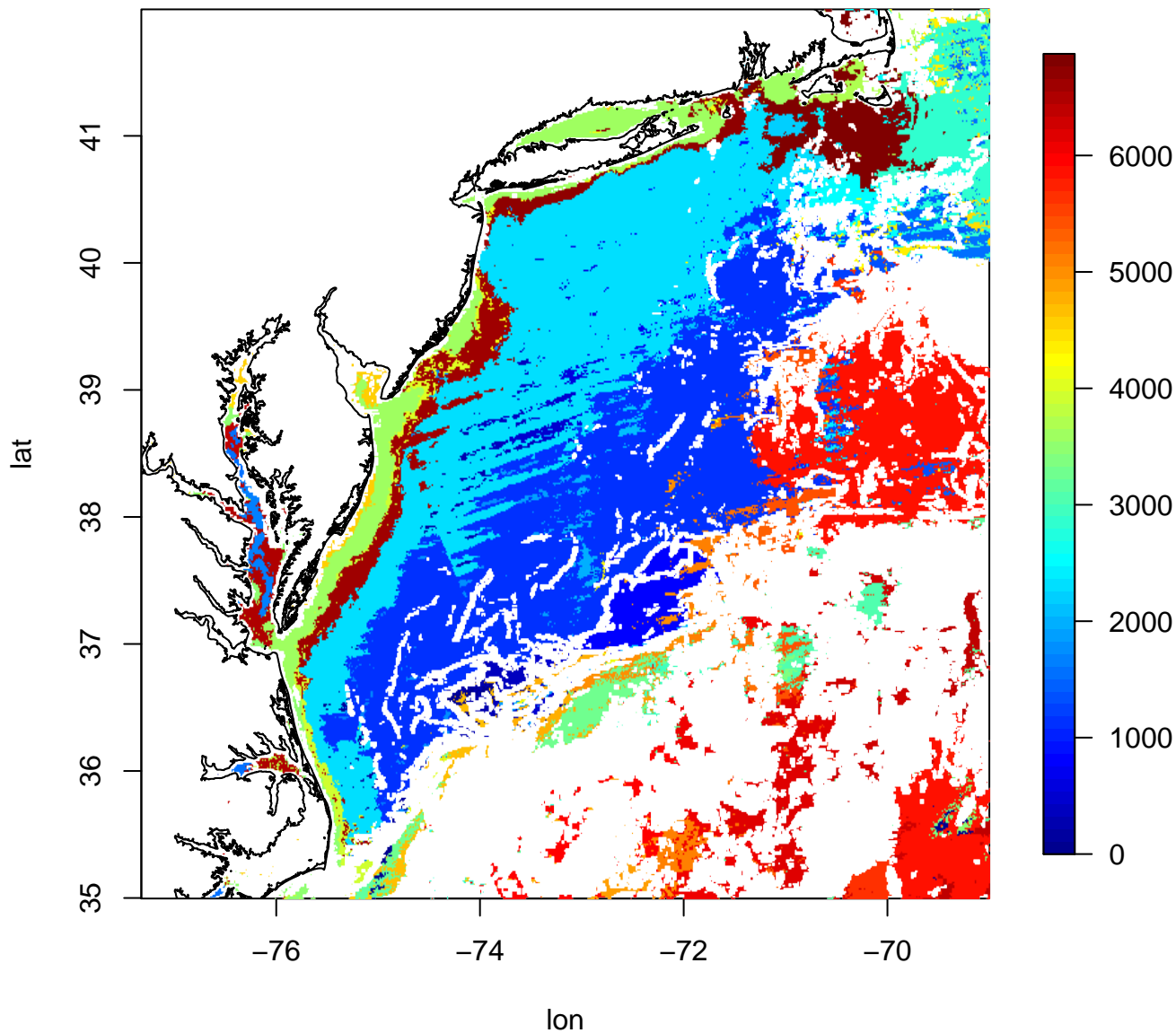


EDA\_W\_stamp  
StampID for Ward's Clustering



# EDA\_K\_stamp

## StampID for K-Means Clustering



**EDA\_WK\_stamp**  
**StampID for Combined Wards and K-means Classification**

