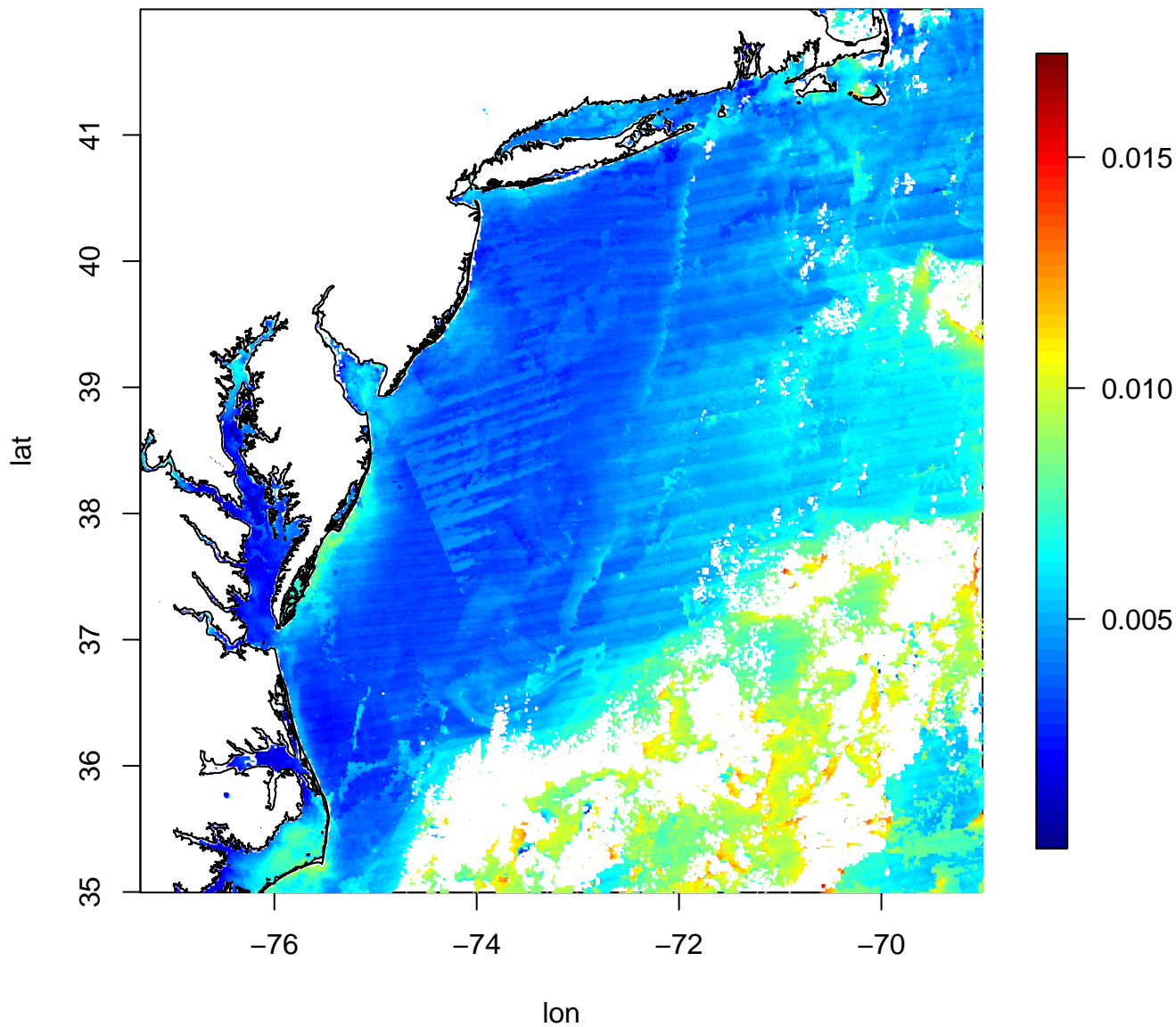
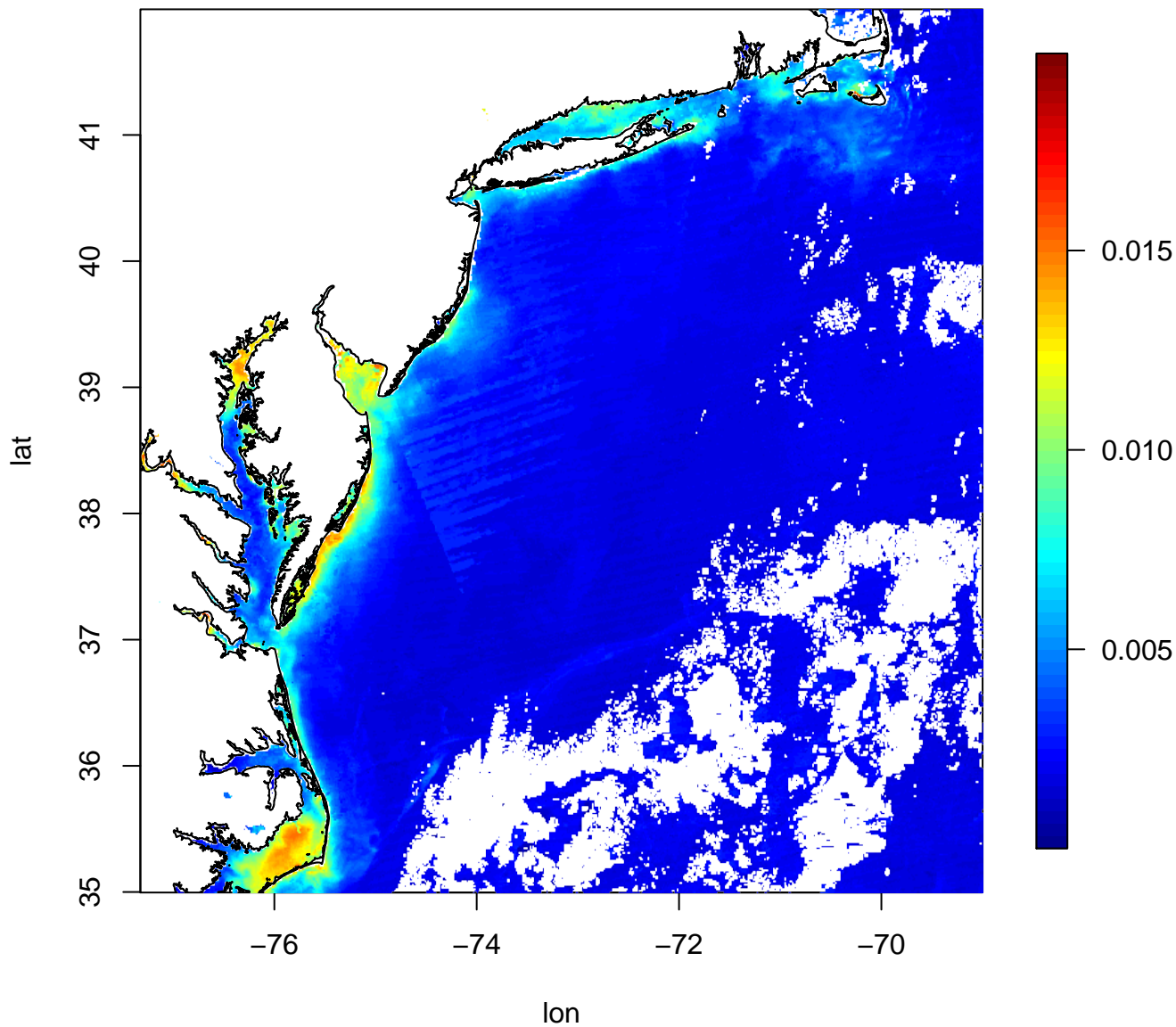


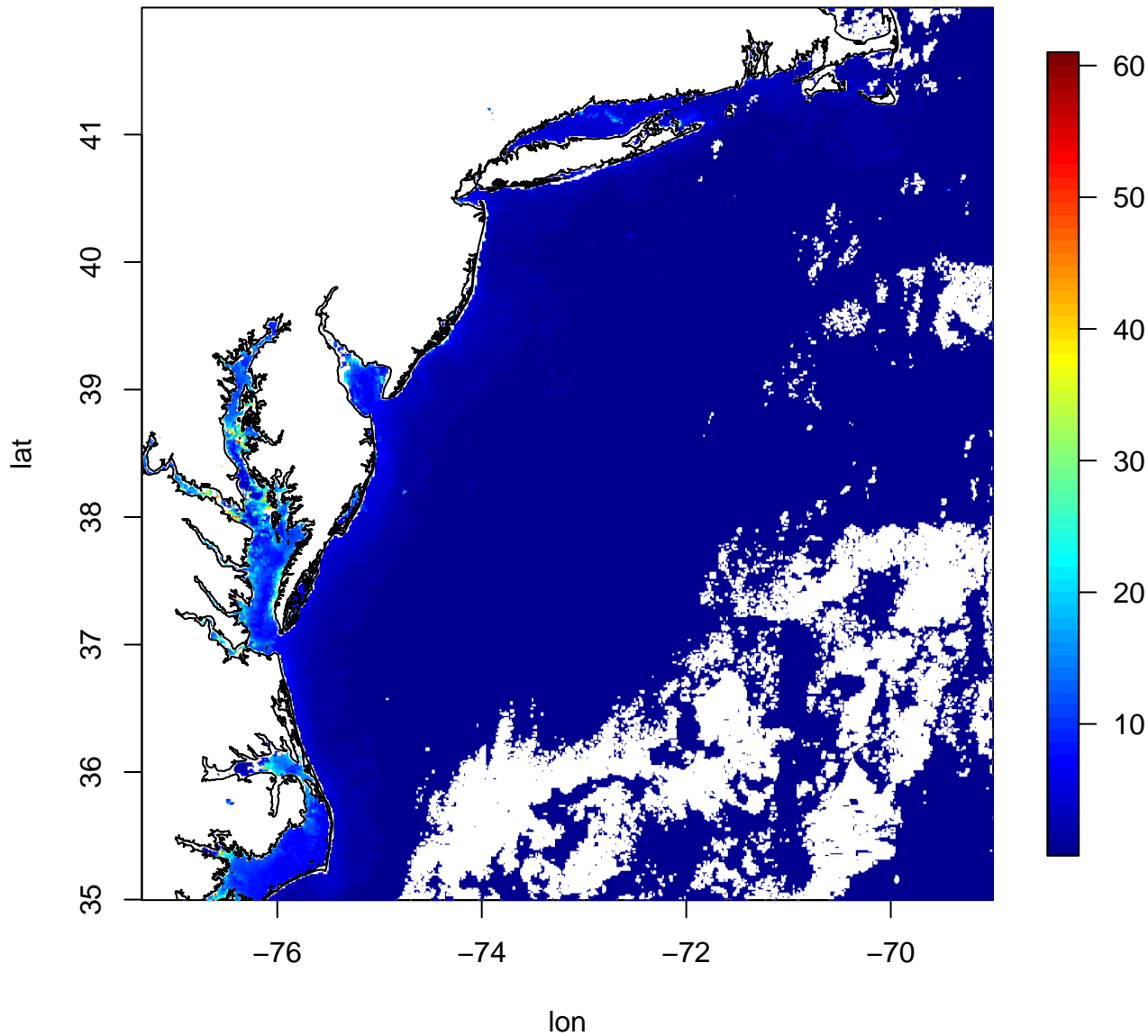
EDA\_Rrs\_443  
Remote sensing reflectance at 443 nm



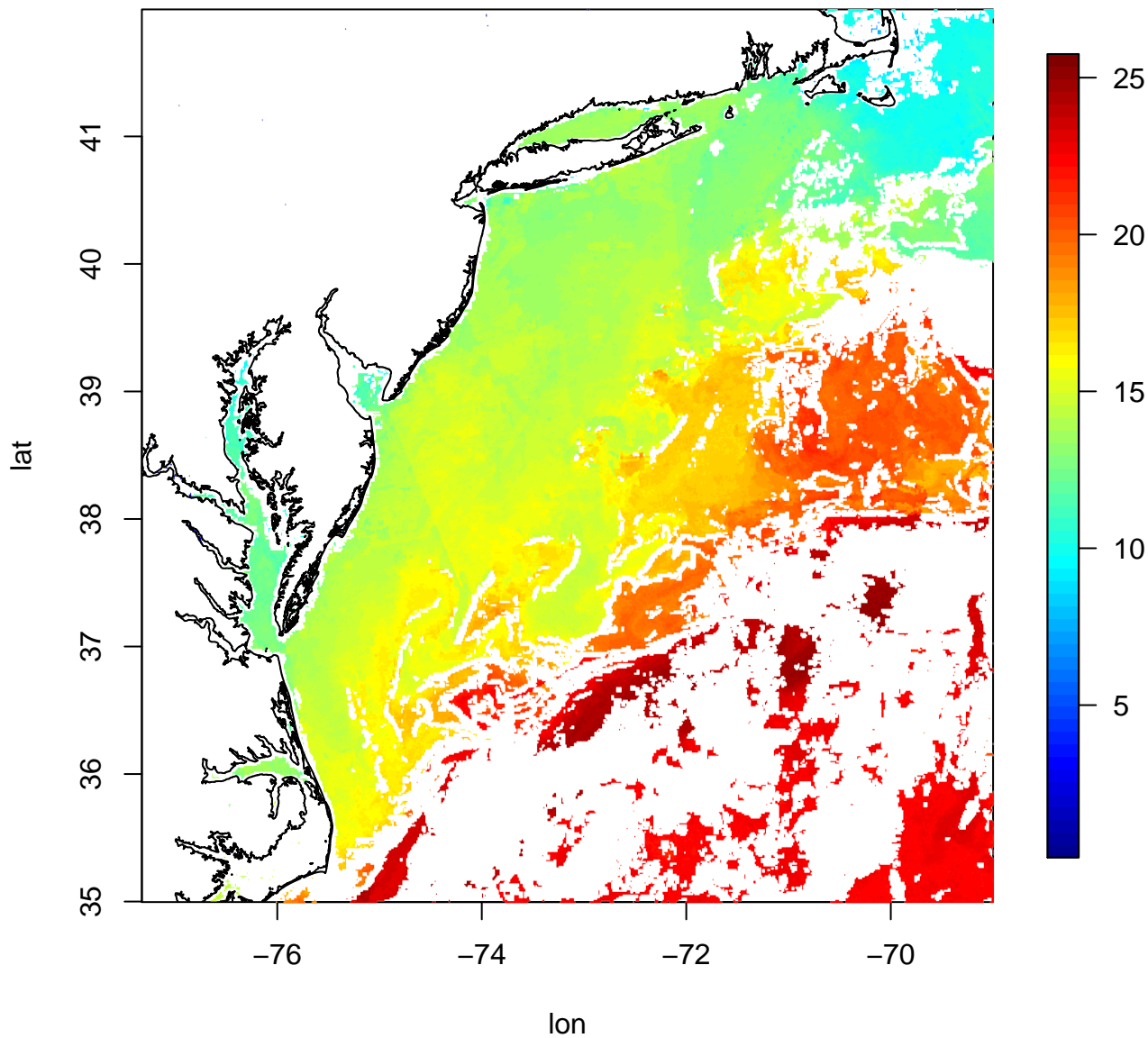
EDA\_Rrs\_555  
Remote sensing reflectance at 555 nm



EDA\_CHLA  
Chlorophyll-a

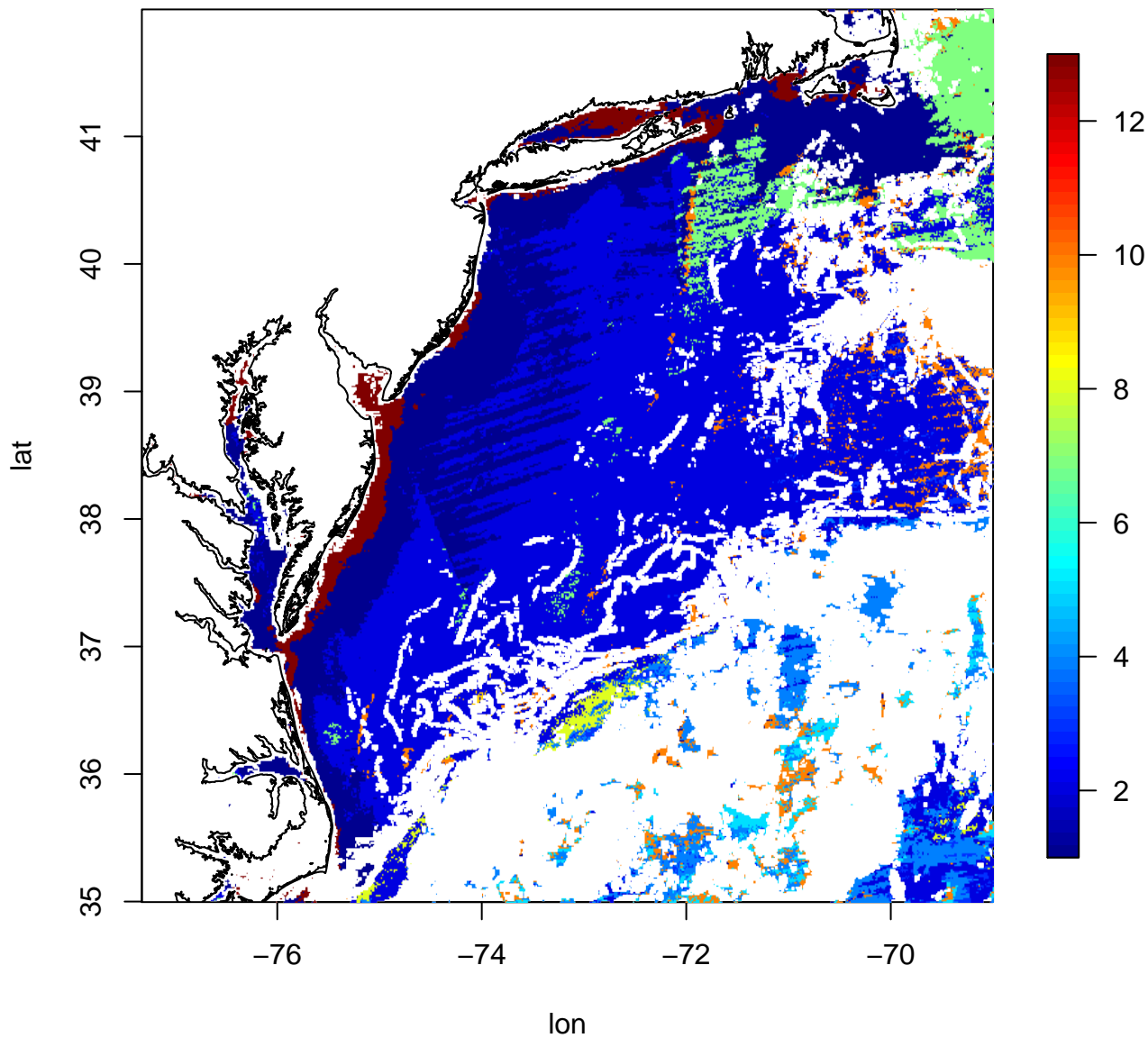


EDA\_SST  
Sea surface temperature

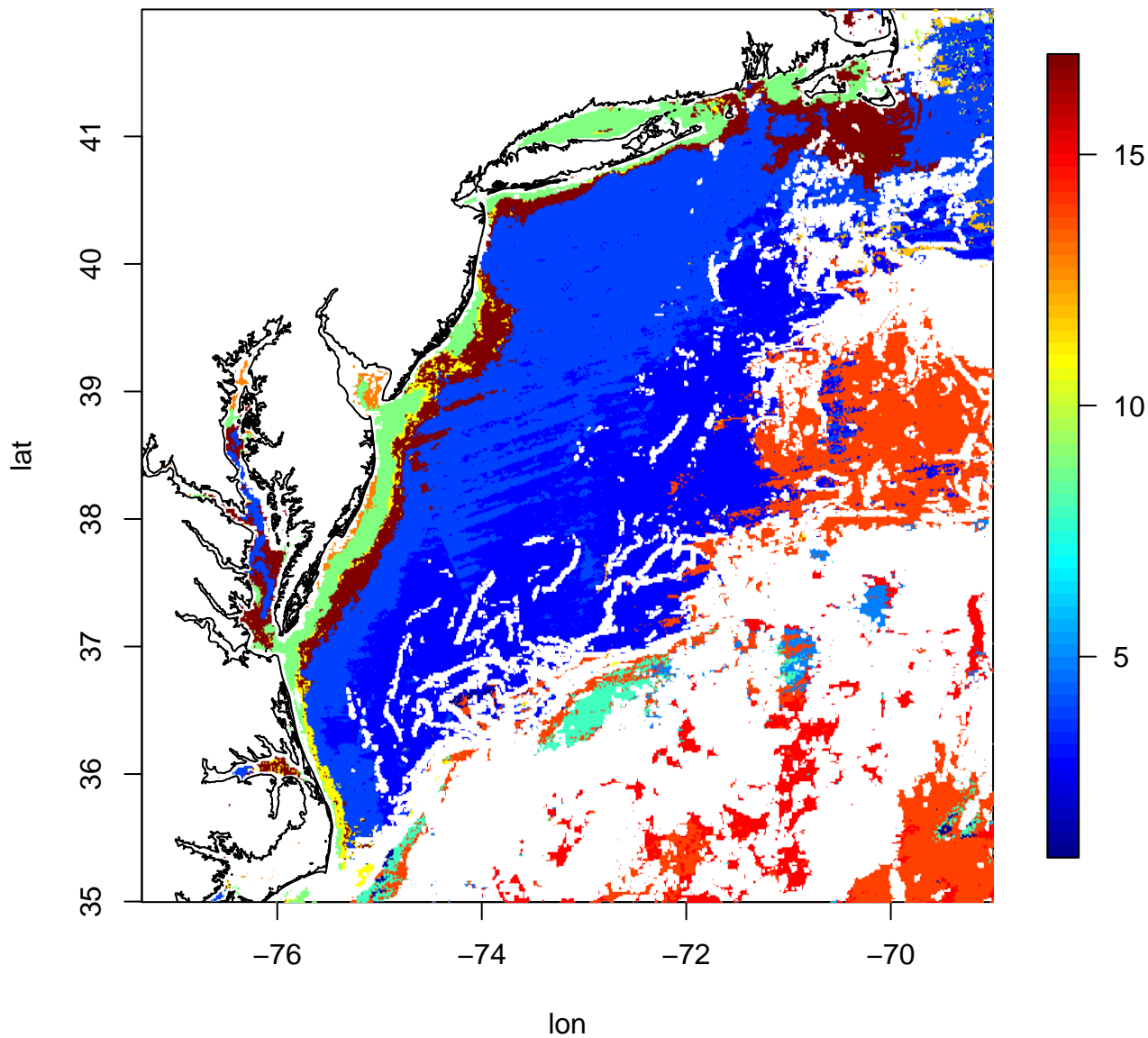




# EDA\_WC Ward's Classification

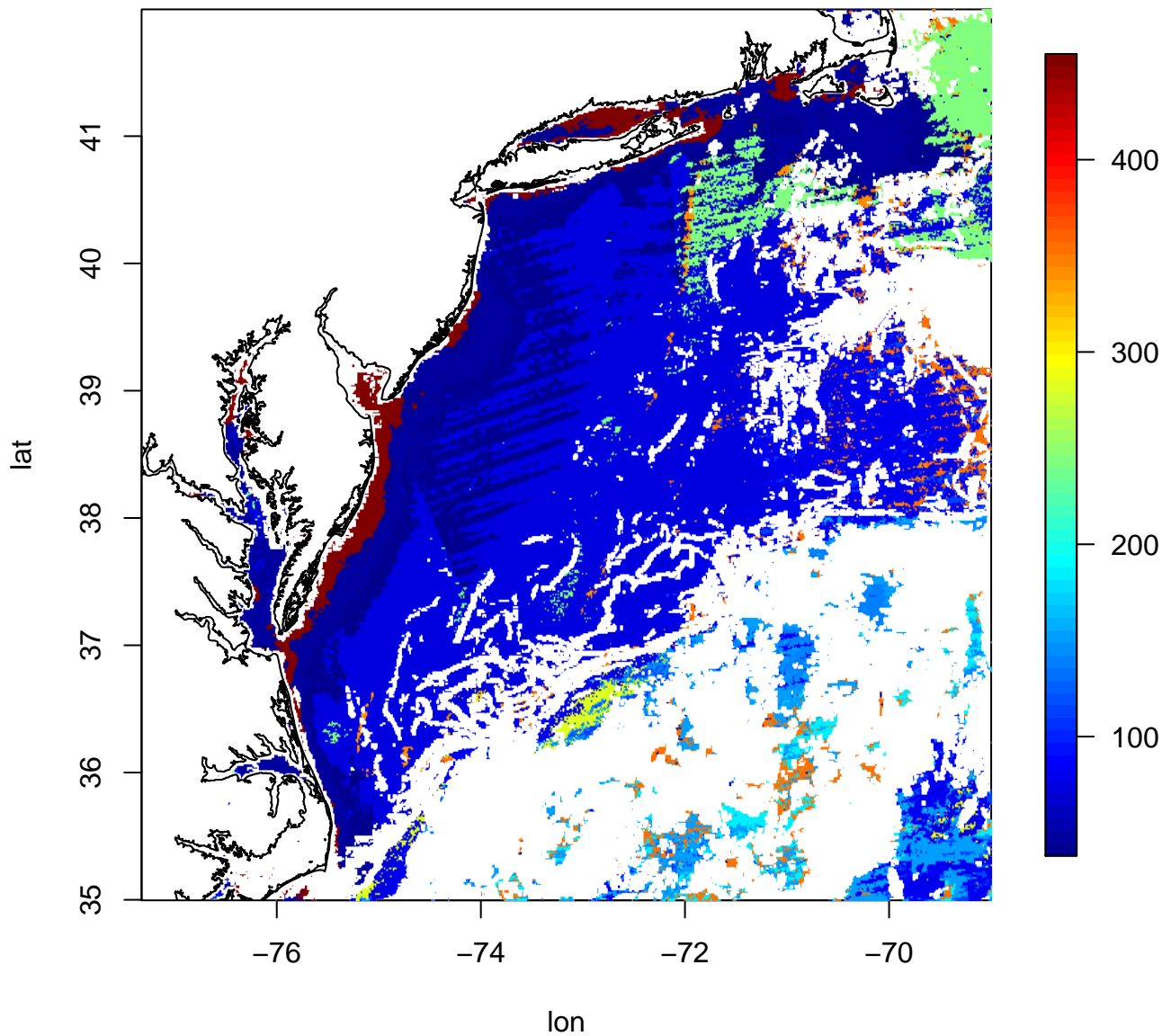


# EDA\_KC K-means Classification



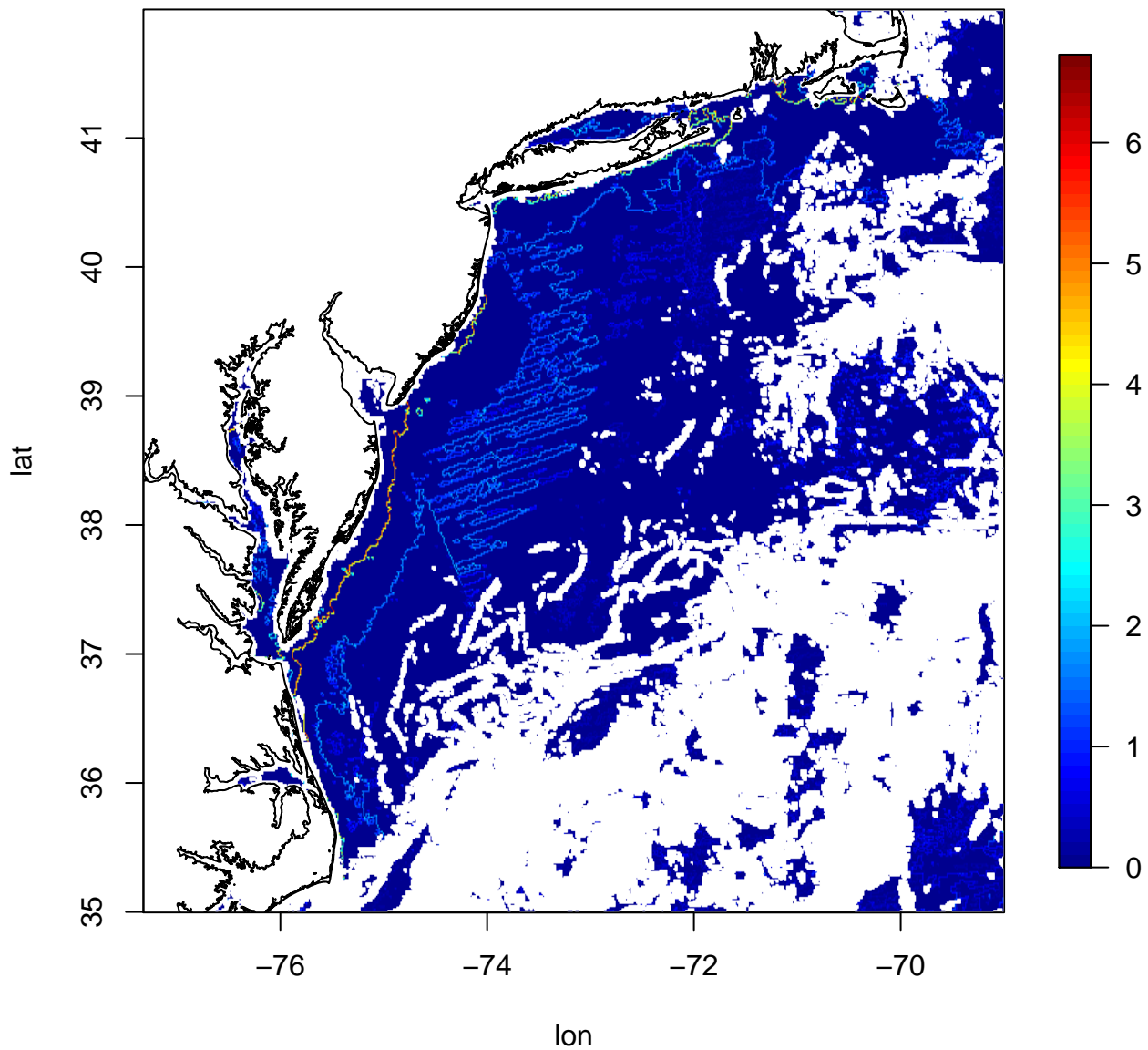
# EDA\_WKC

## Combined Wards and K-means Classification



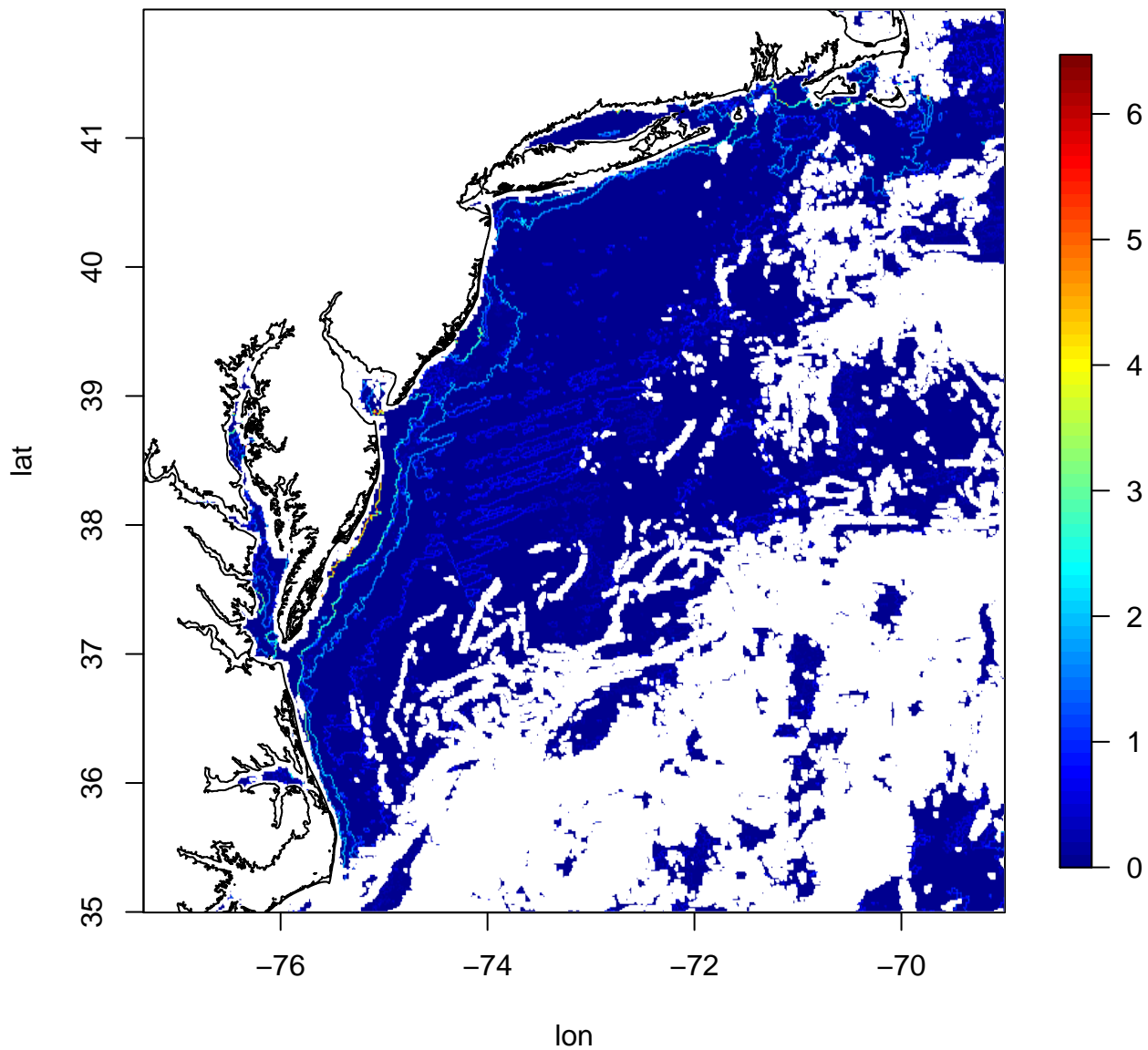
# EDA\_WG

## Gradient Strength for Ward's Classification



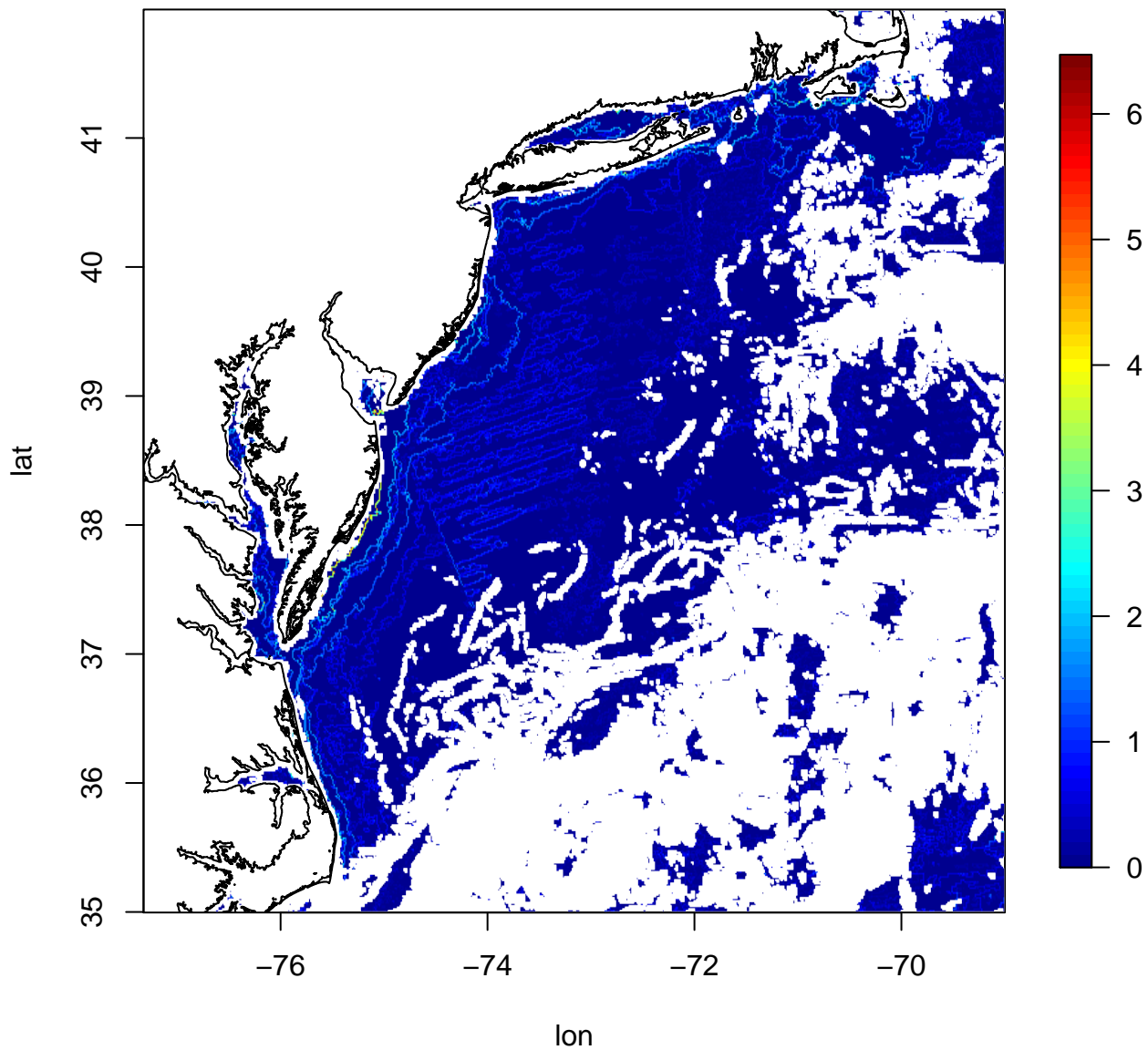
# EDA\_KG

## Gradient Strength for K-means Classification



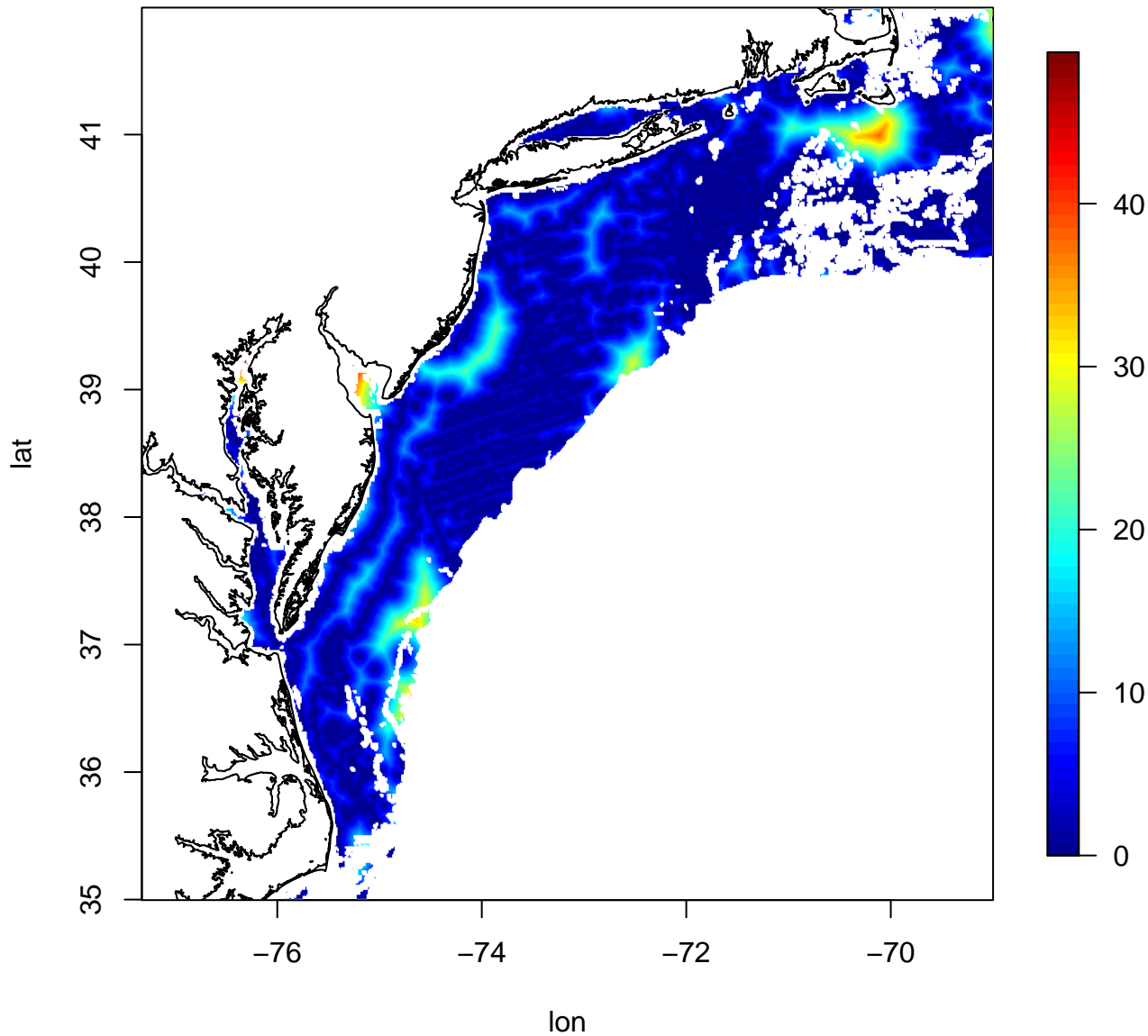
# EDA\_WKG

## Gradient Strength for Combined Wards and K-means Classification



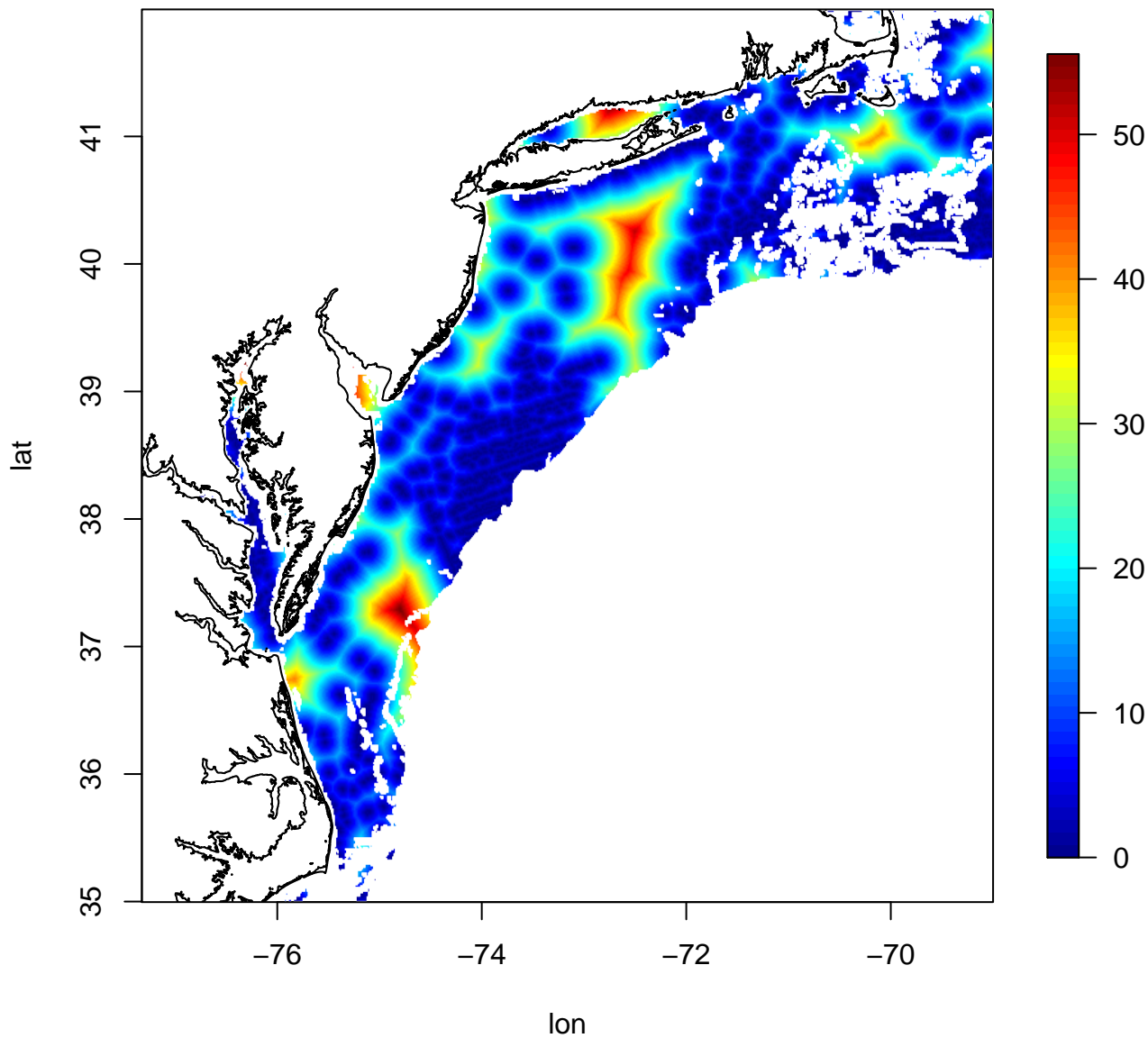


EDA\_WG\_dist  
Minimum distance to gradient for Ward's Classification



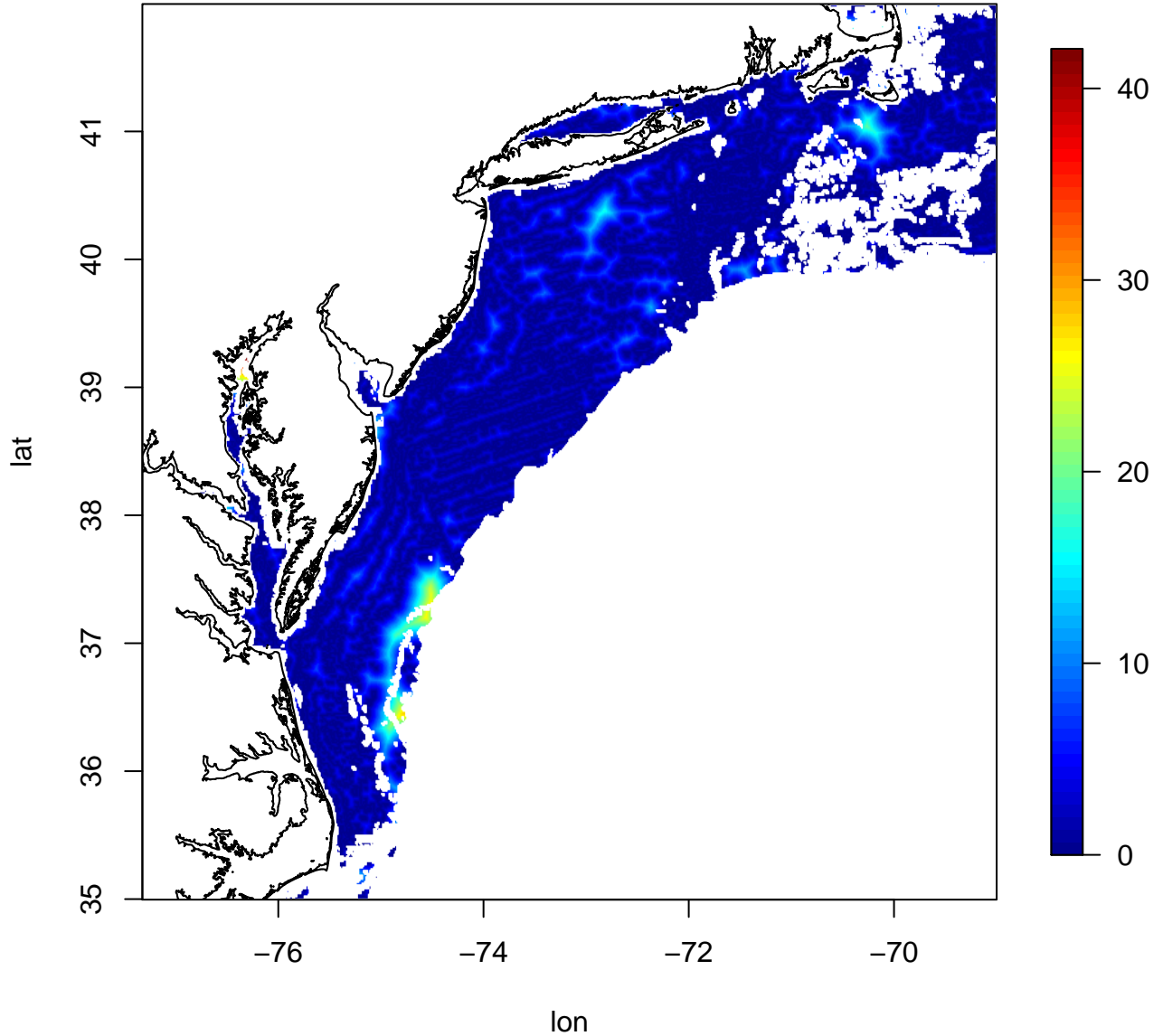
# EDA\_KG\_dist

## Minimum distance to gradient for K-means Classification

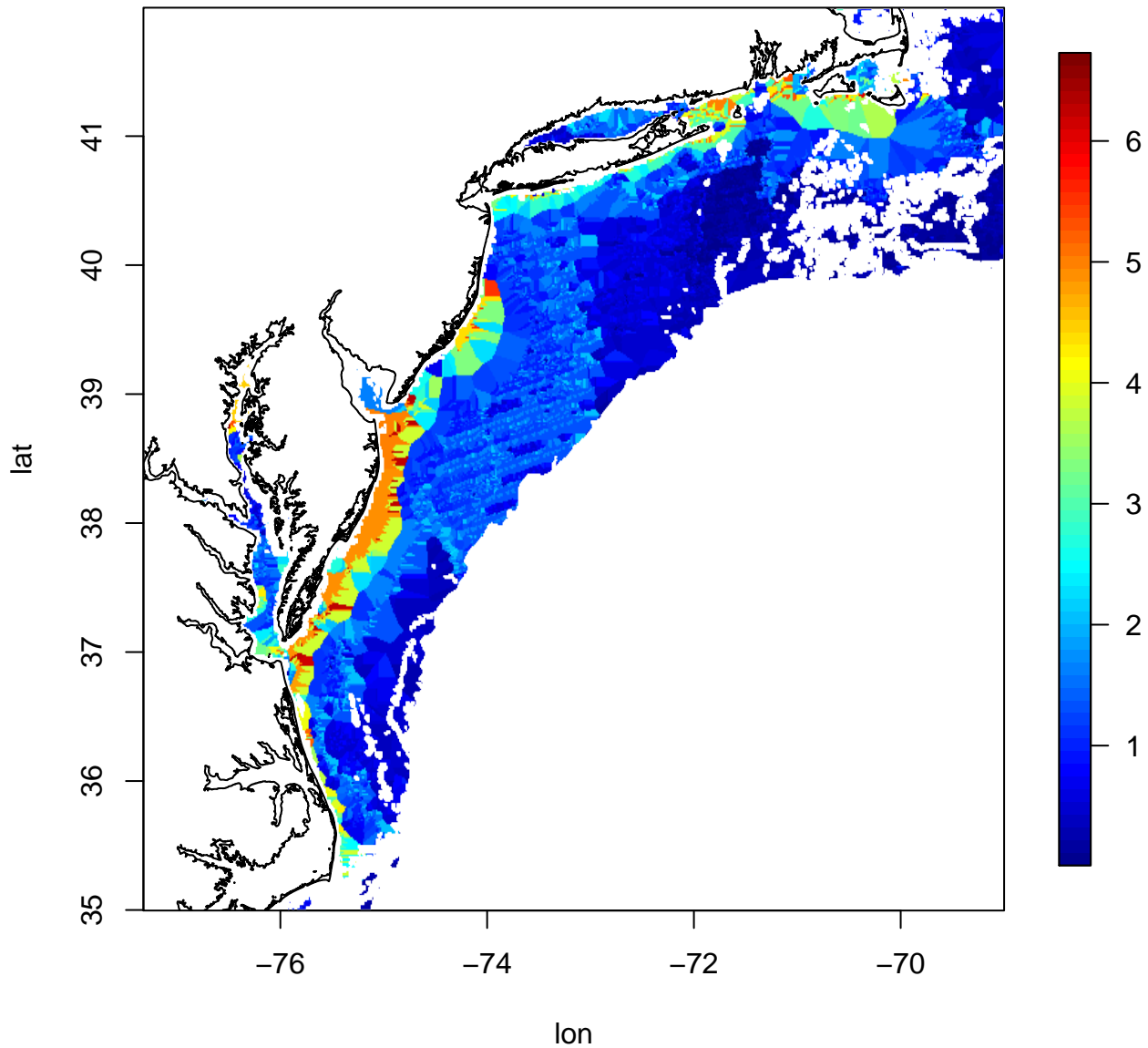


# EDA\_WKG\_dist

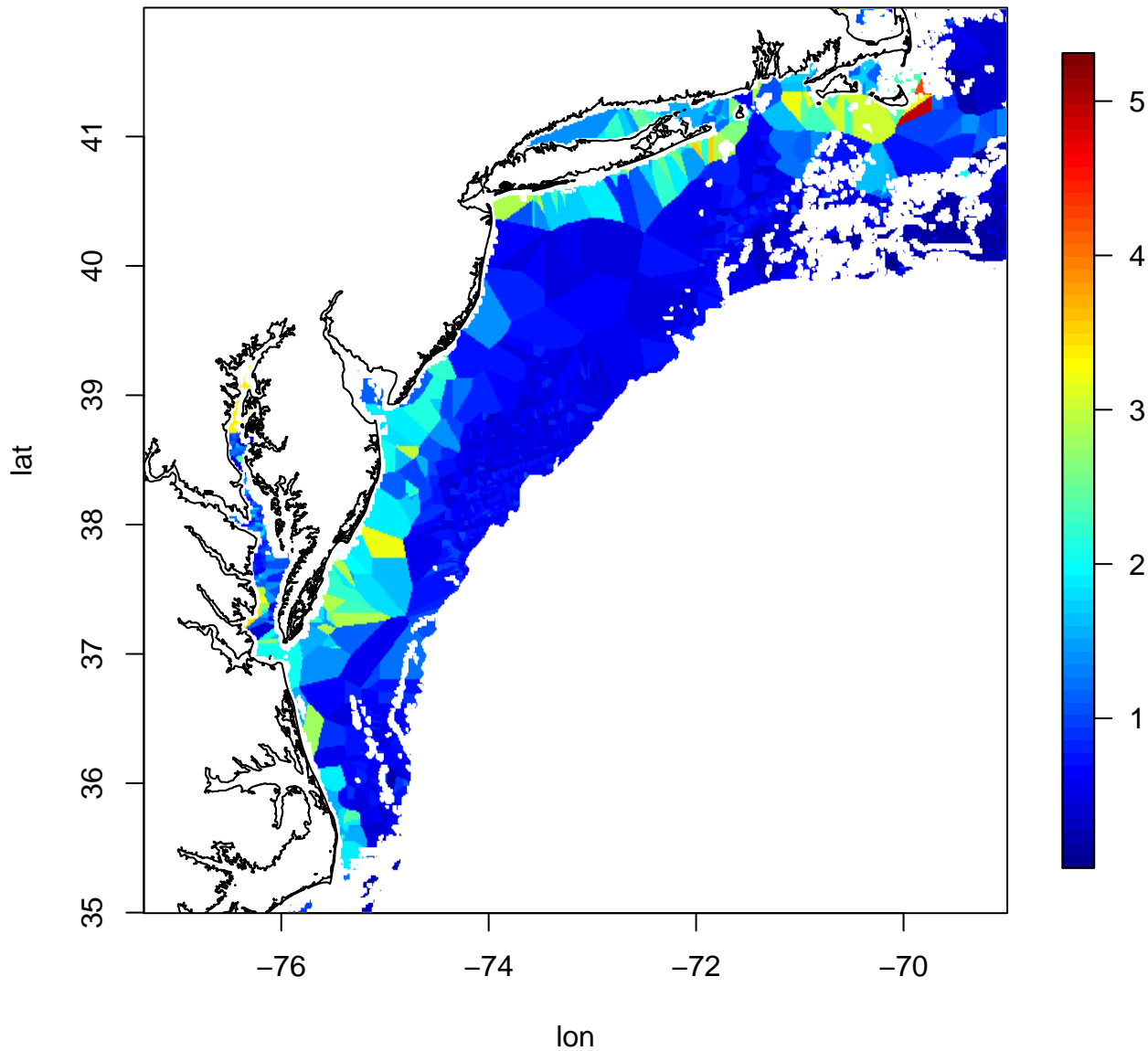
Minimum distance to gradient for Combined Wards and K-means Classification



EDA\_WG\_dist\_gs  
Gradient Strength for closest gradient for Ward's Classification

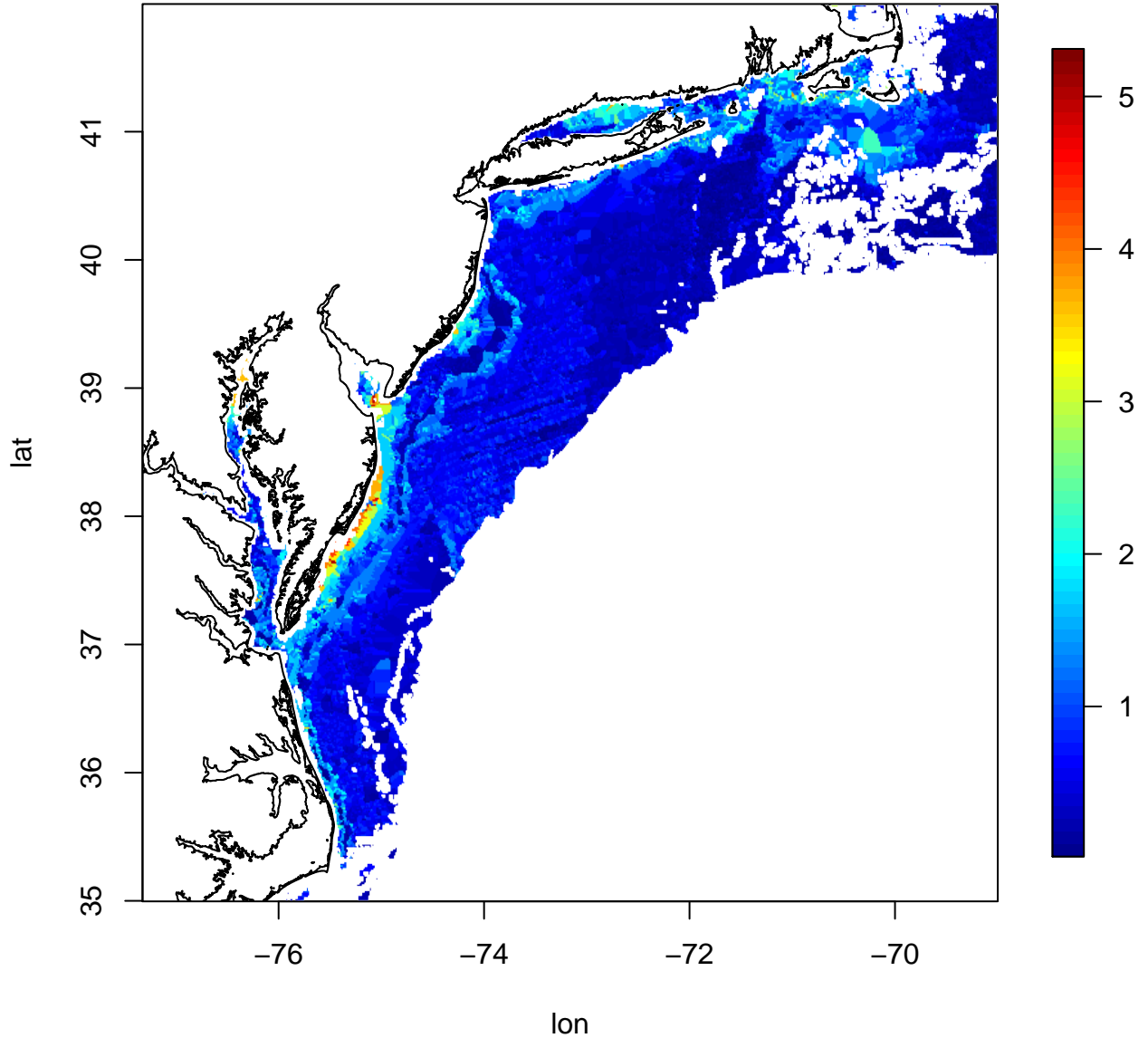


EDA\_KG\_dist\_gs  
Gradient Strength for closest gradient for K-means Classification



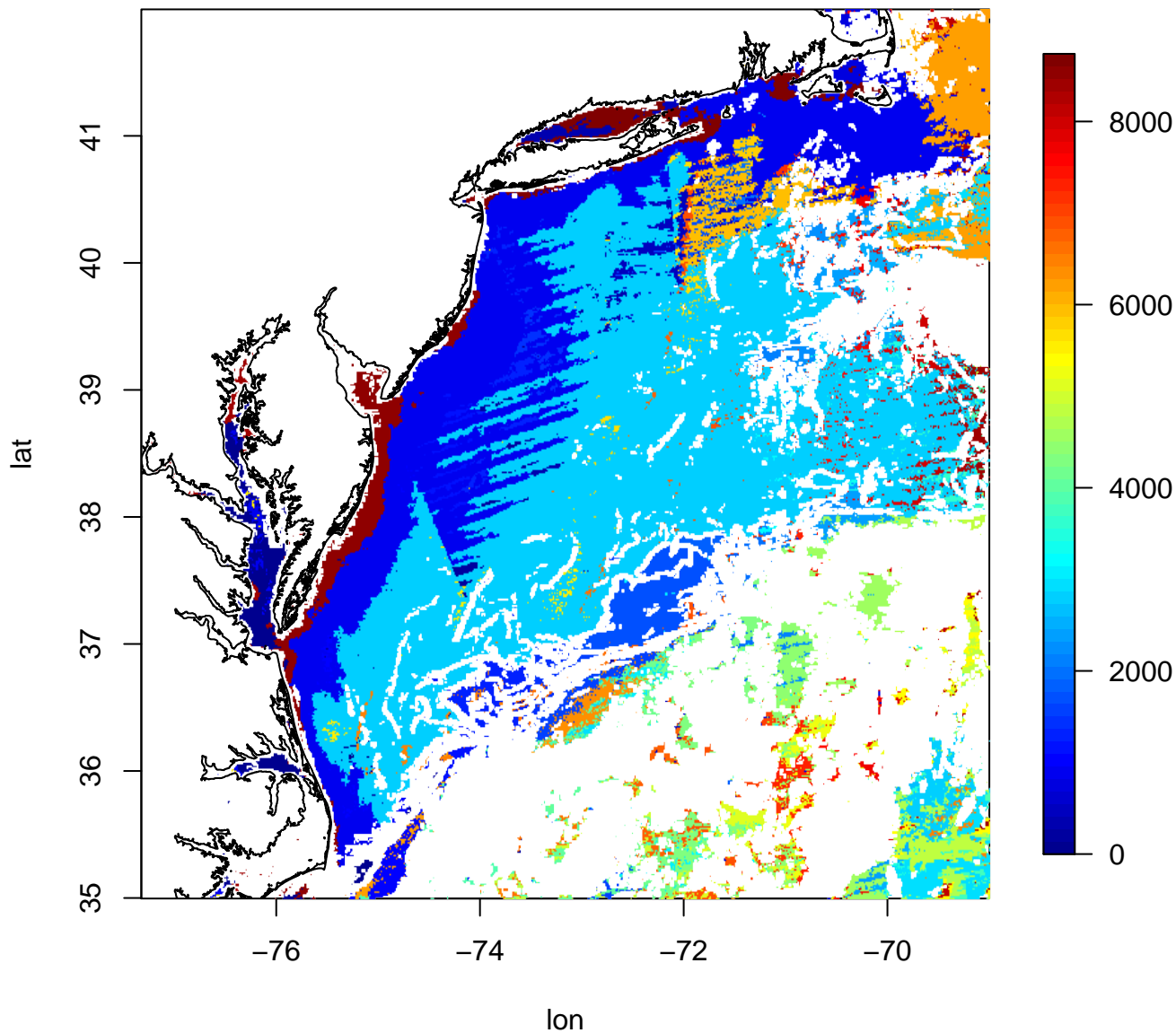
# EDA\_WKG\_dist\_gs

Gradient Strength for closest gradient for Combined Wards and K-means Classification

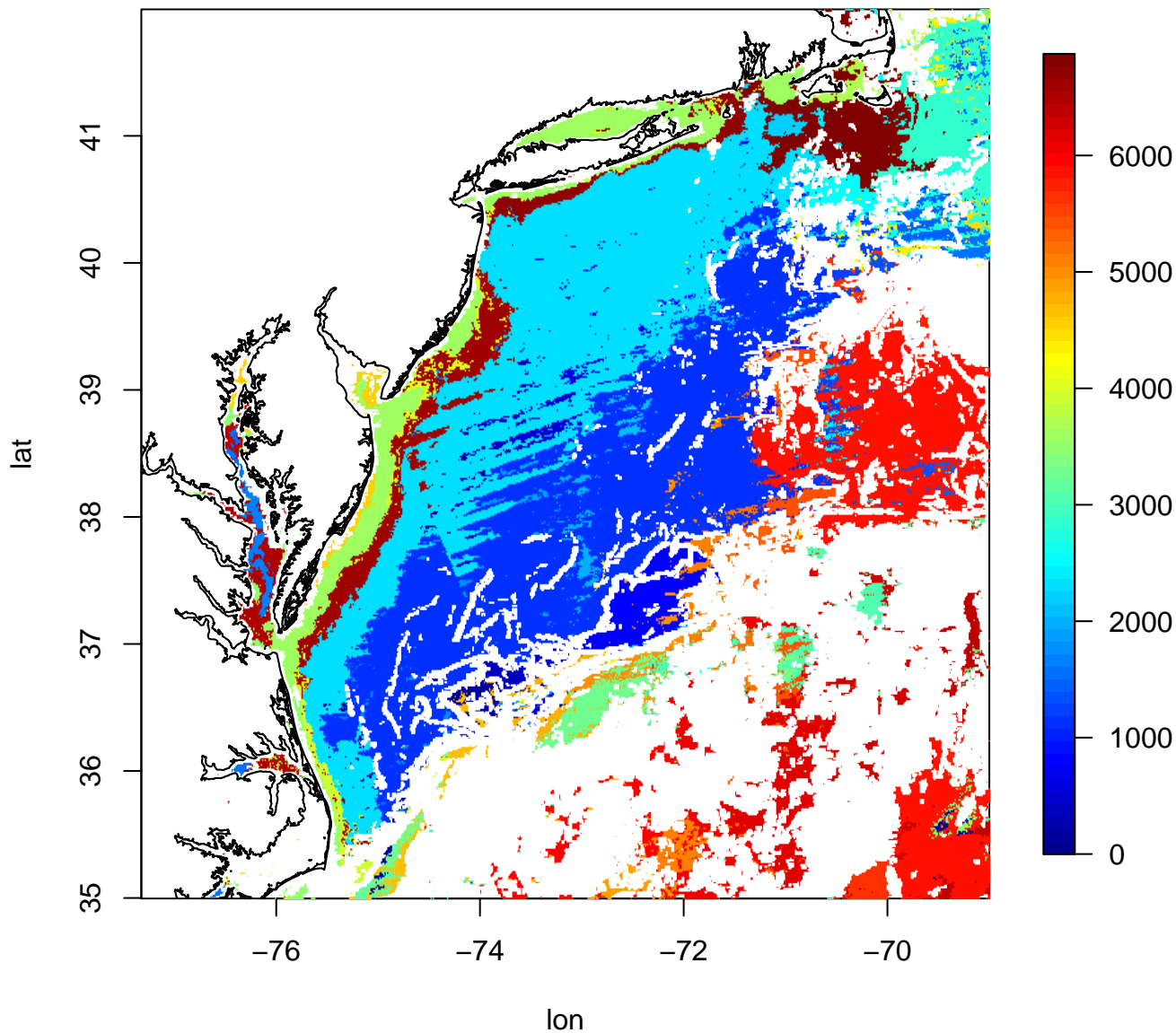




EDA\_W\_stamp  
StampID for Ward's Clustering



EDA\_K\_stamp  
StampID for K-Means Clustering



**EDA\_WK\_stamp**  
**StampID for Combined Wards and K-means Classification**

