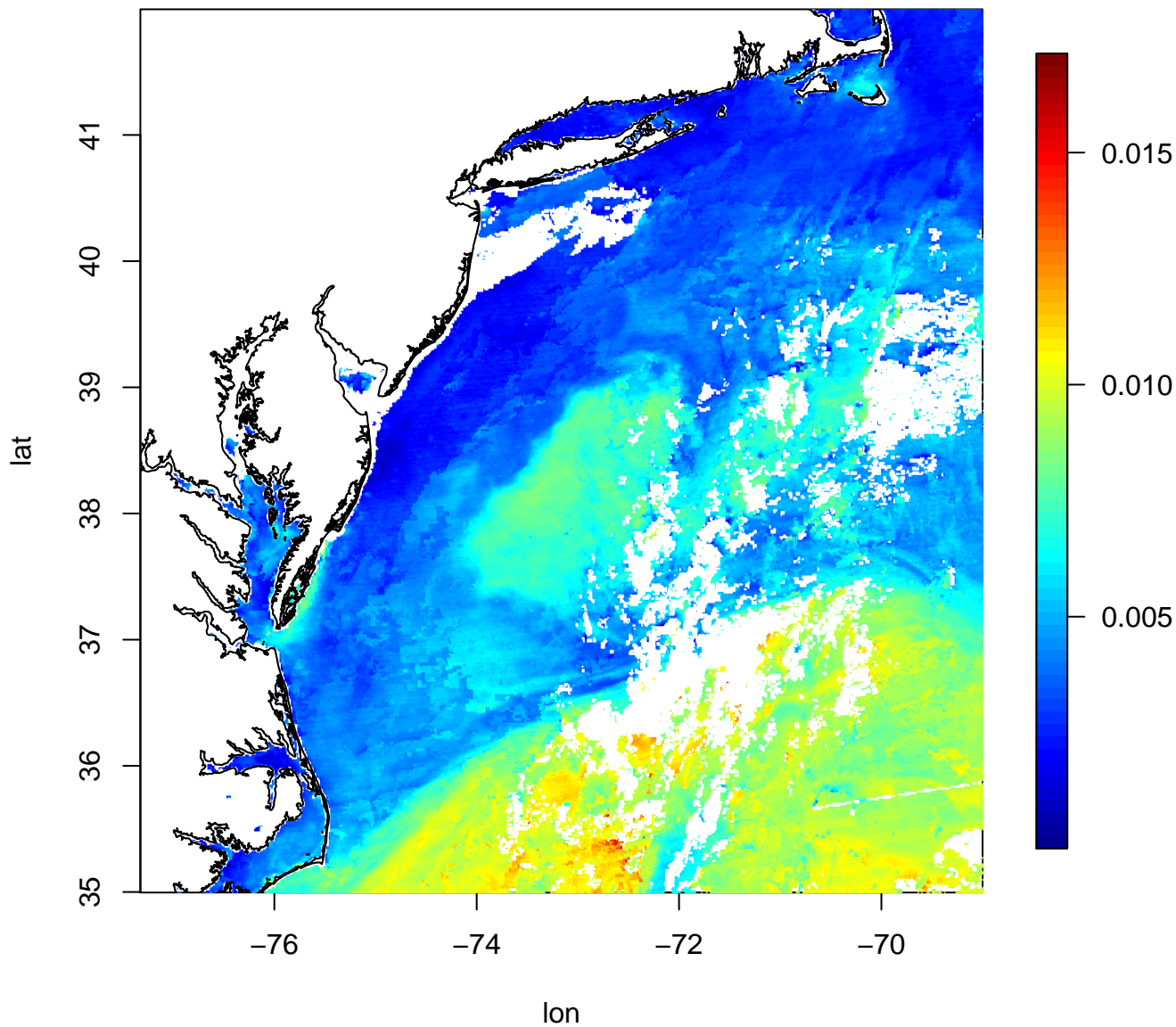
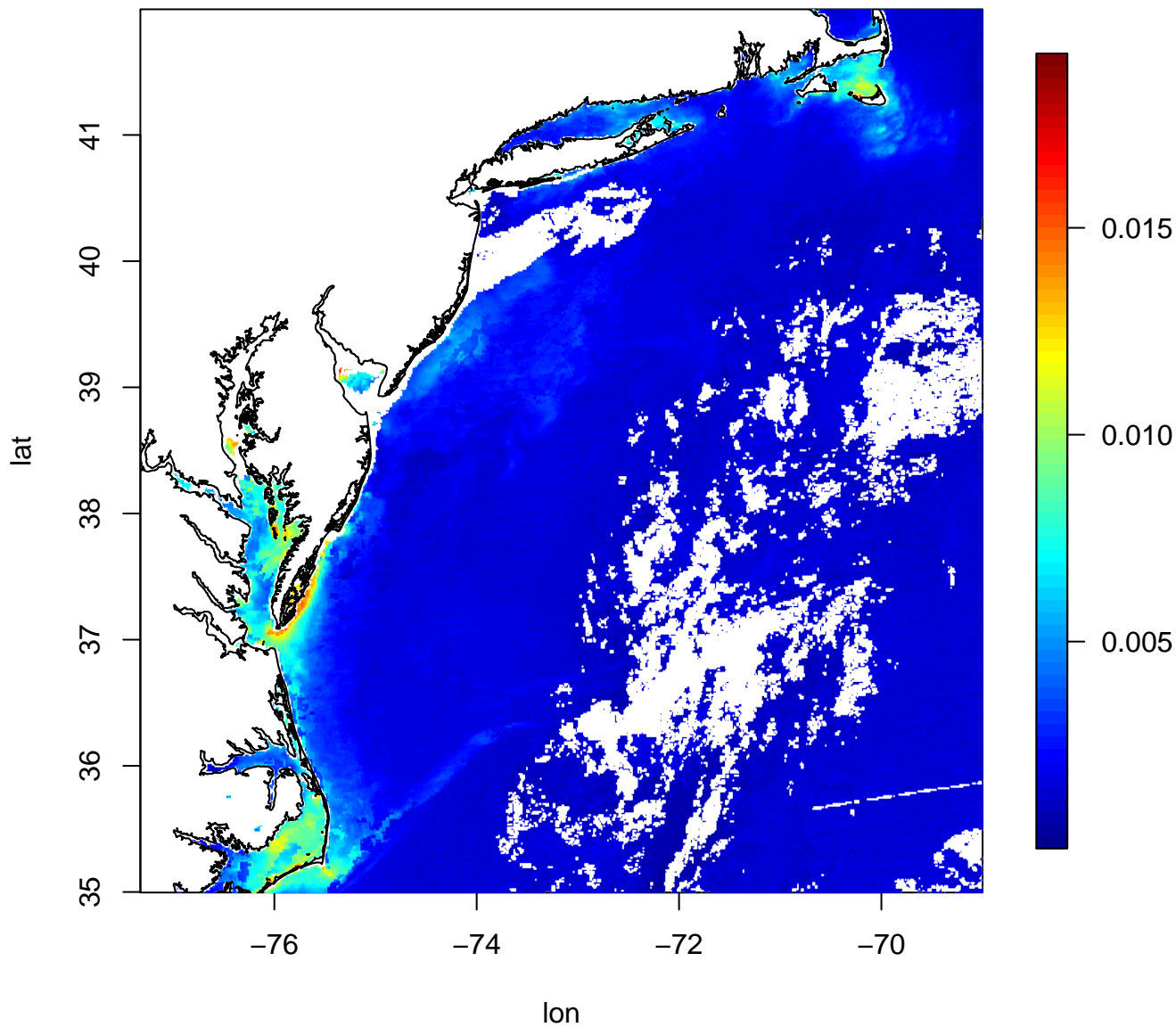


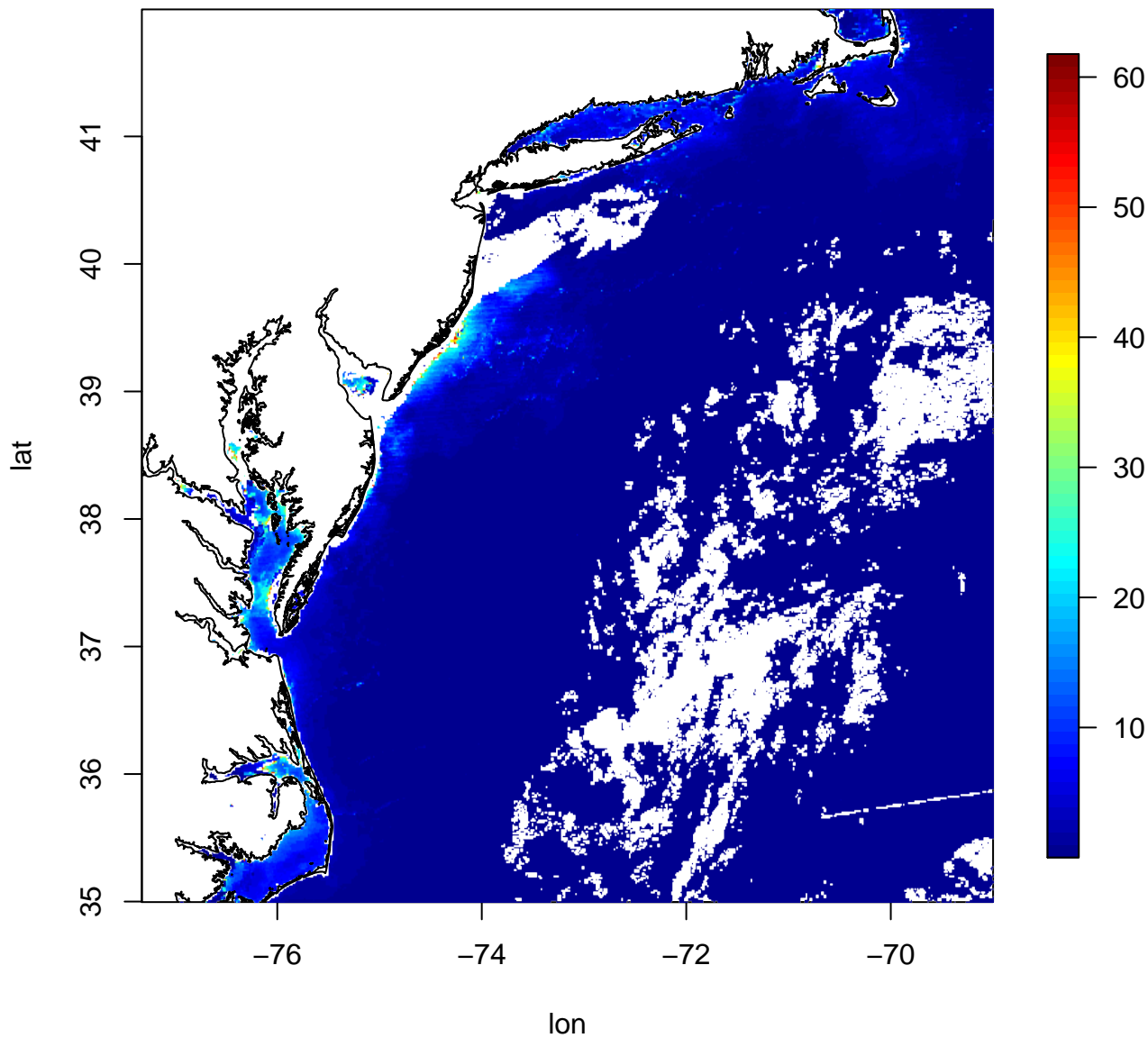
EDA\_Rrs\_443  
Remote sensing reflectance at 443 nm



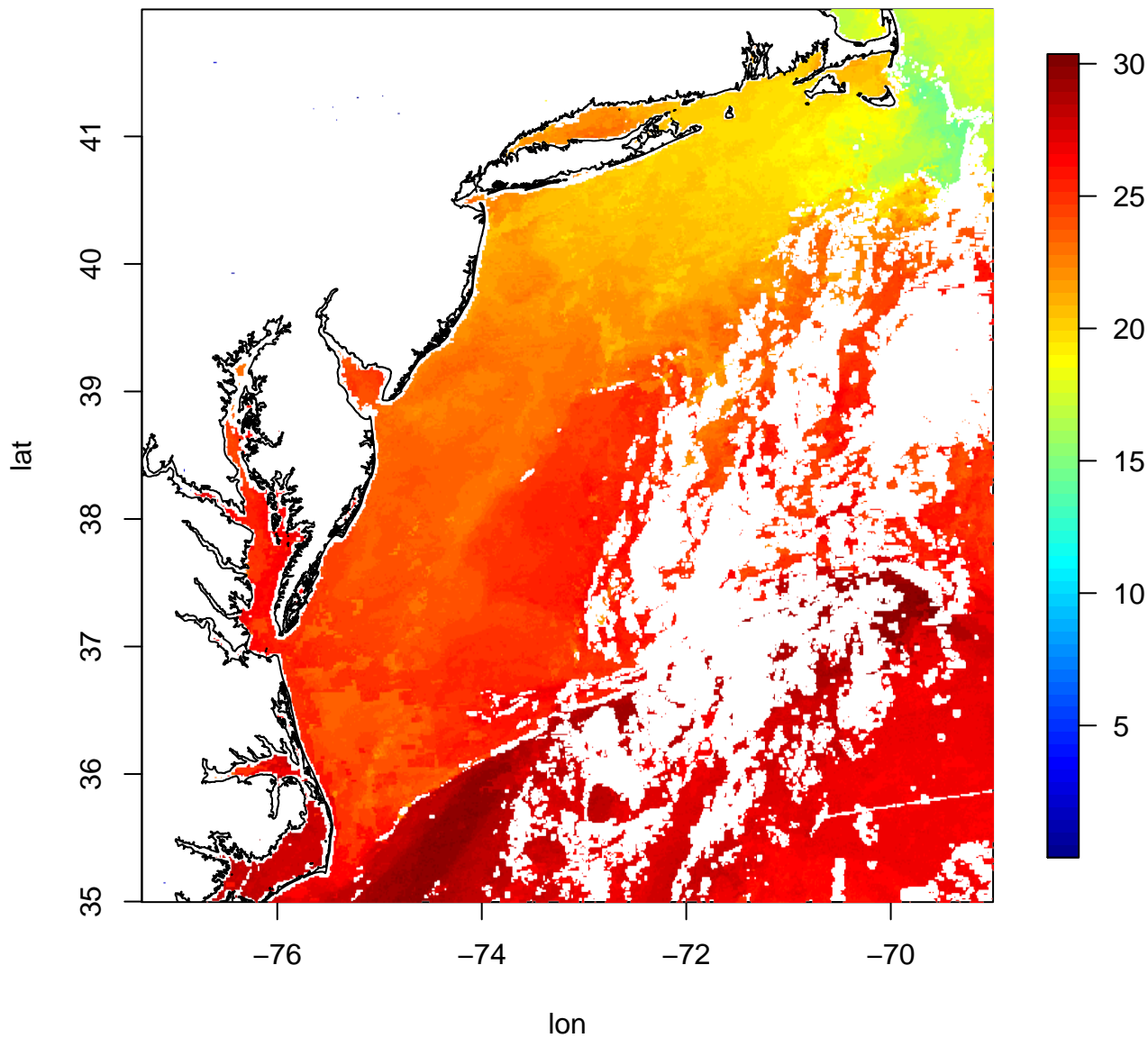
EDA\_Rrs\_555  
Remote sensing reflectance at 555 nm



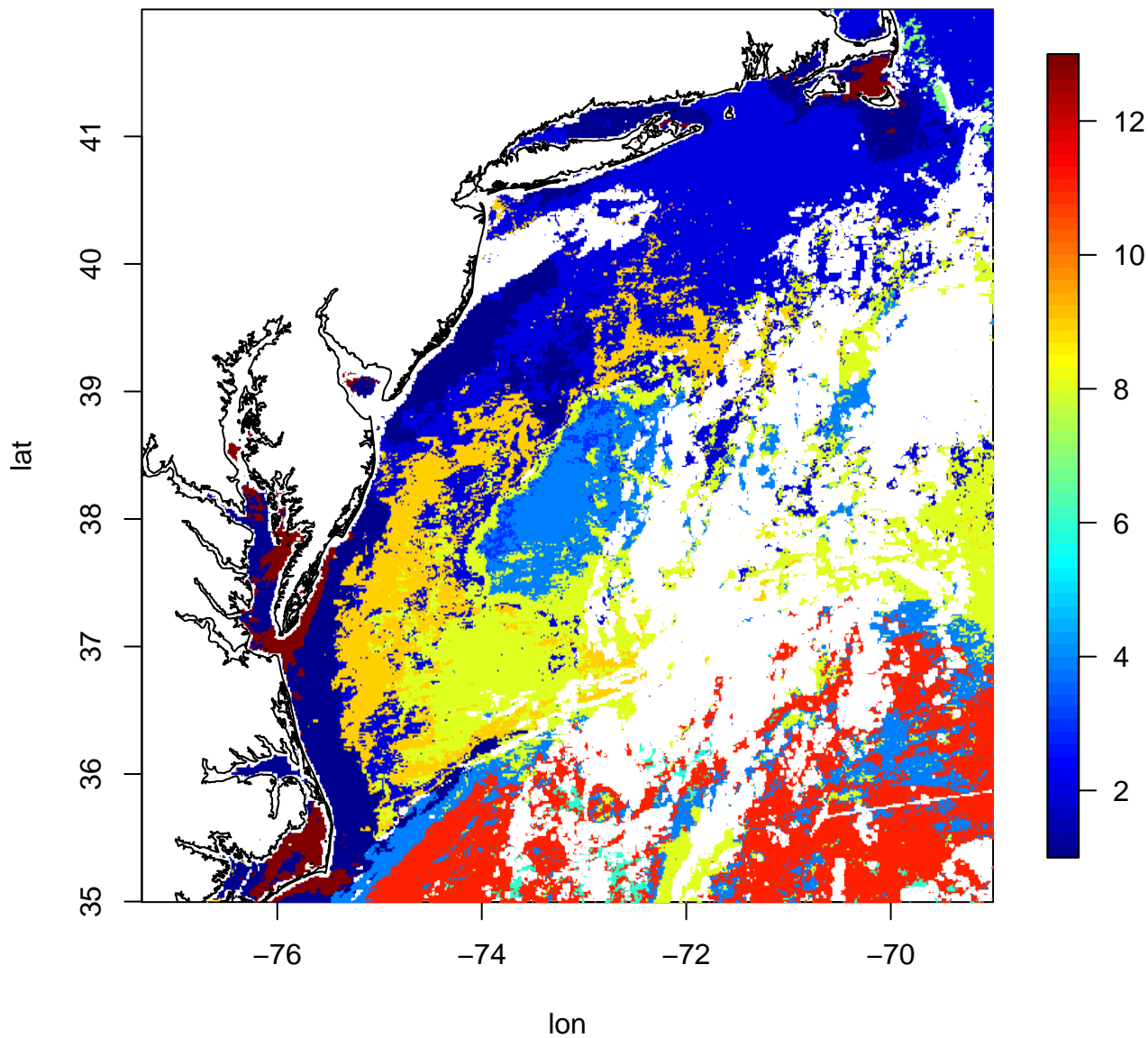
EDA\_CHLA  
Chlorophyll-a



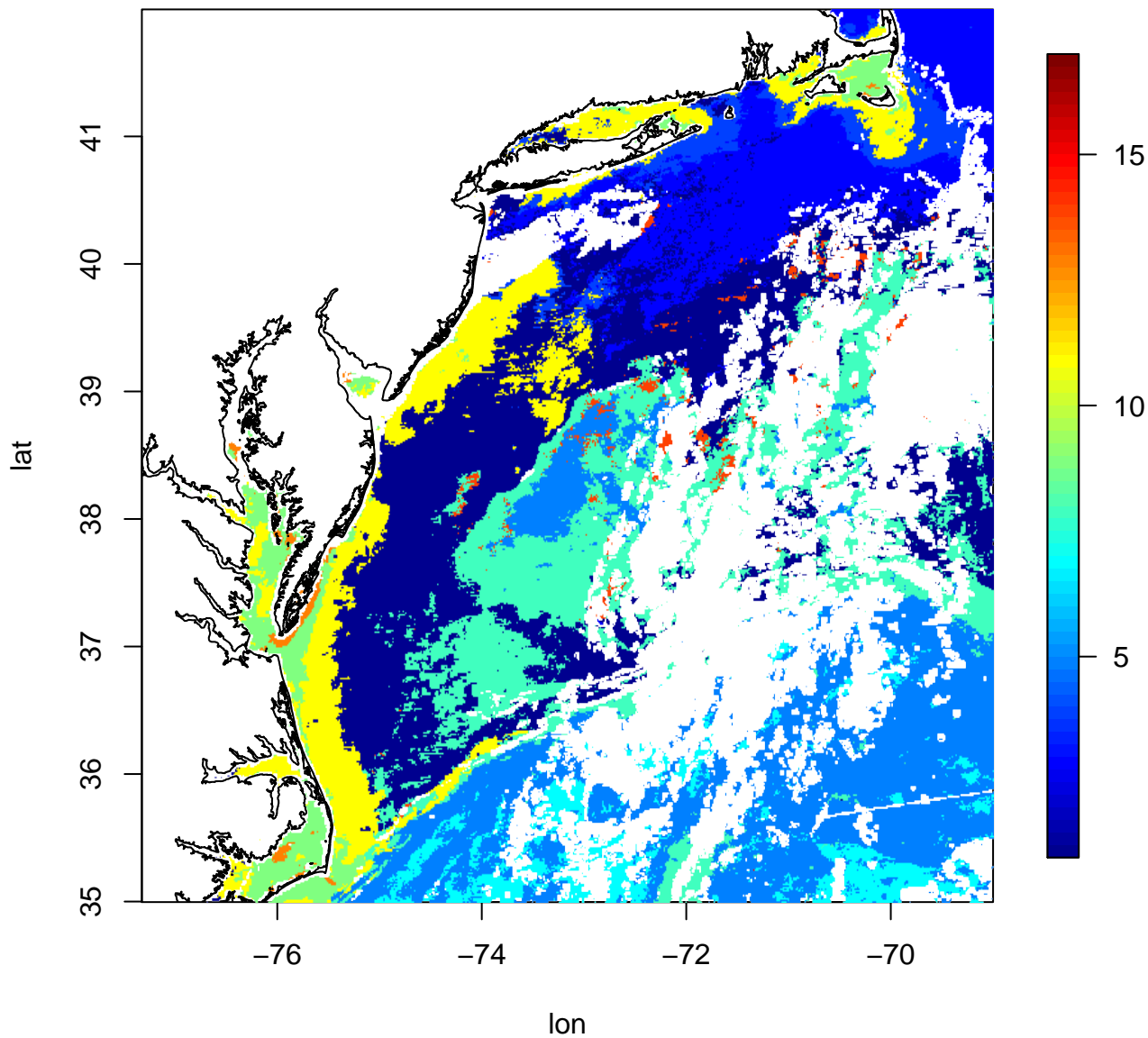
EDA\_SST  
Sea surface temperature



# EDA\_WC Ward's Classification

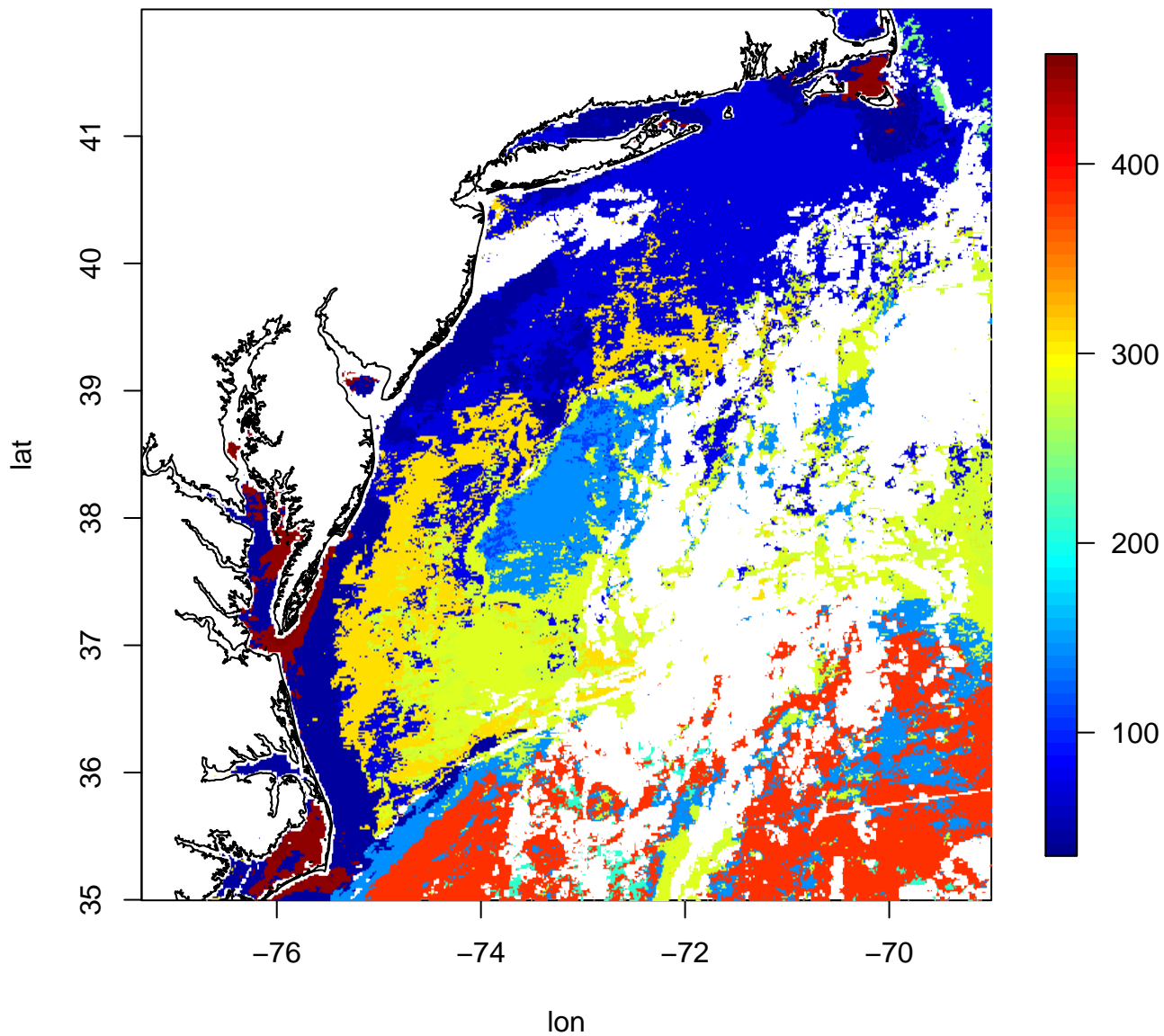


# EDA\_KC K-means Classification



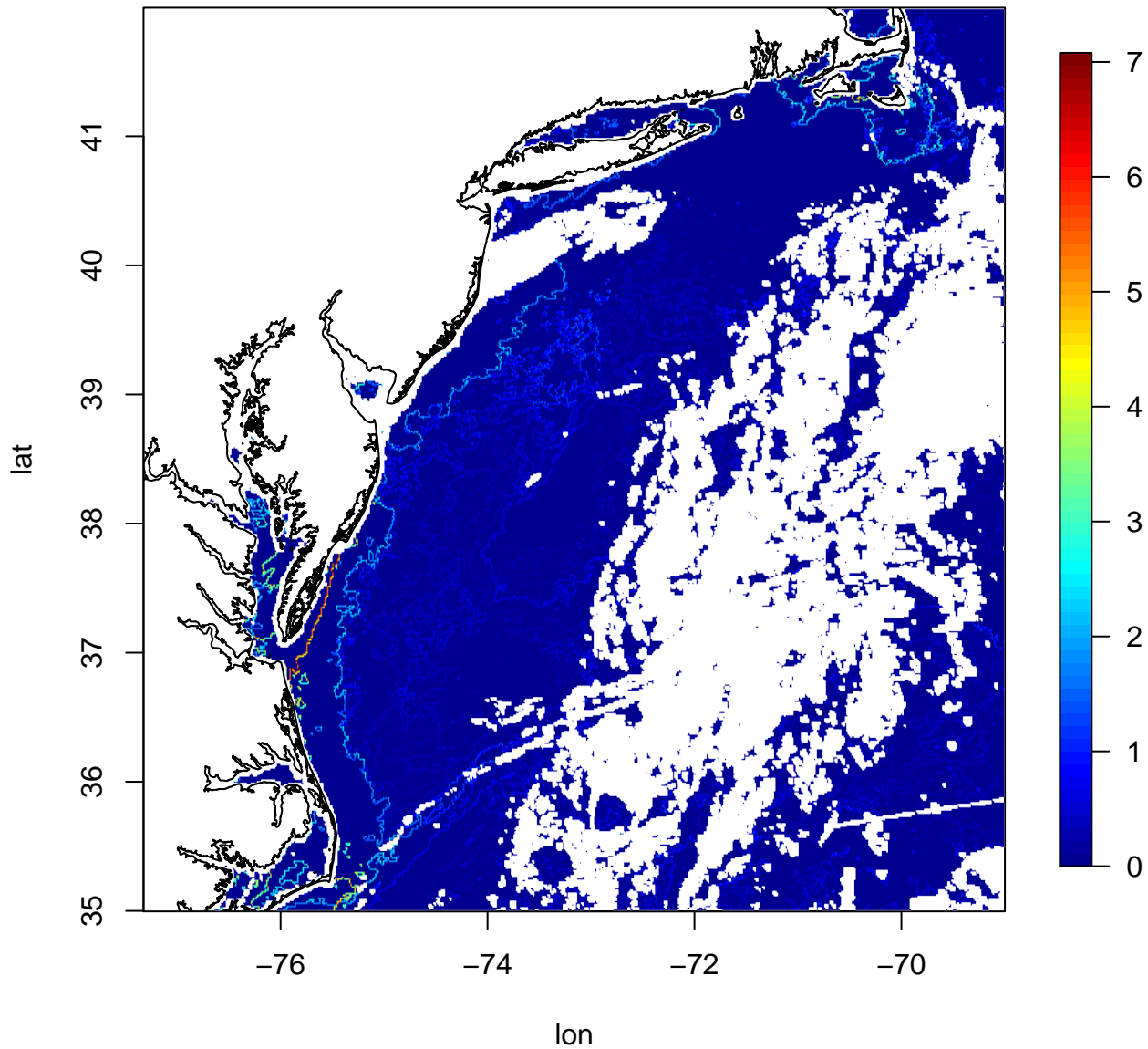
# EDA\_WKC

## Combined Wards and K-means Classification



# EDA\_WG

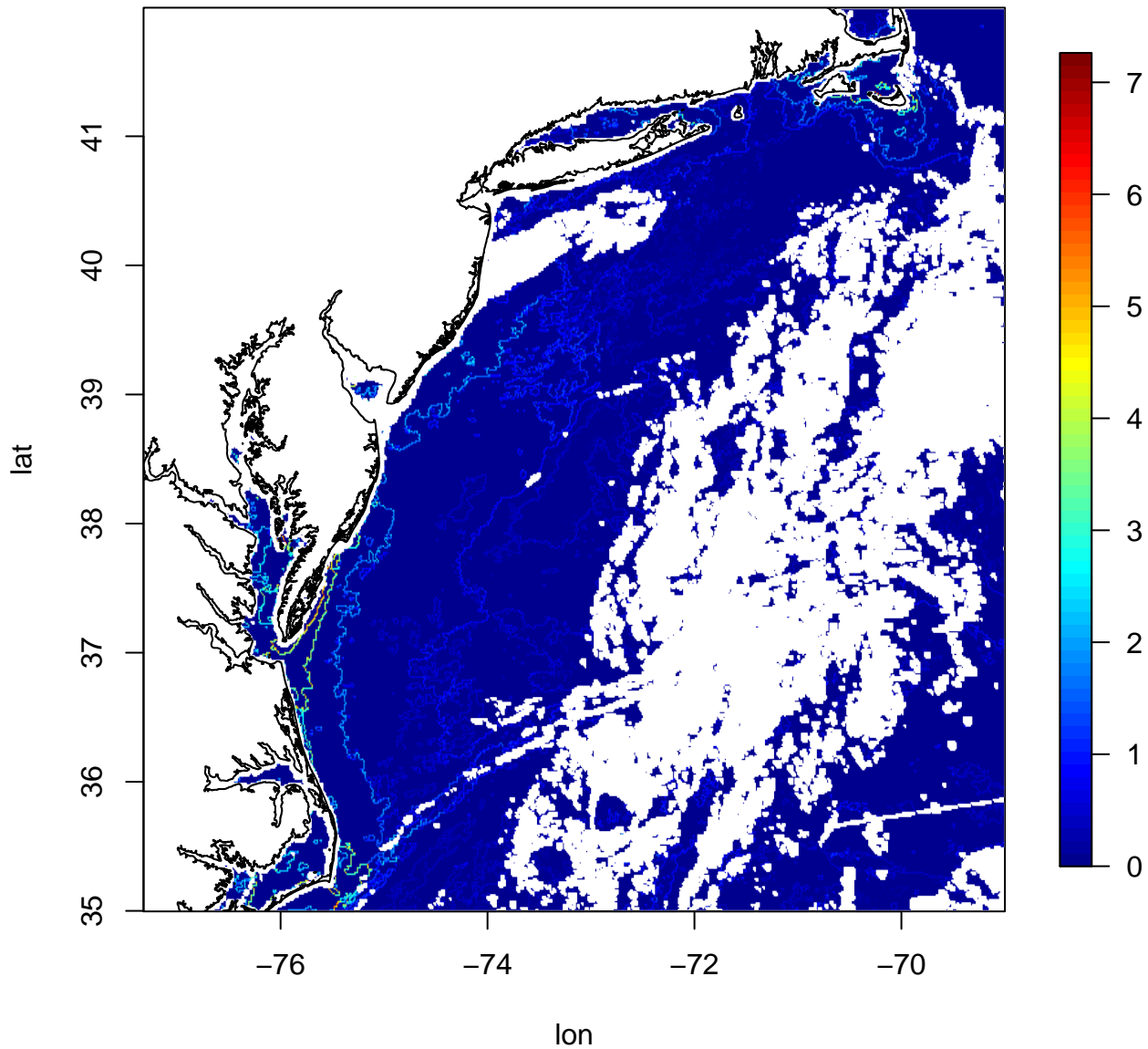
## Gradient Strength for Ward's Classification





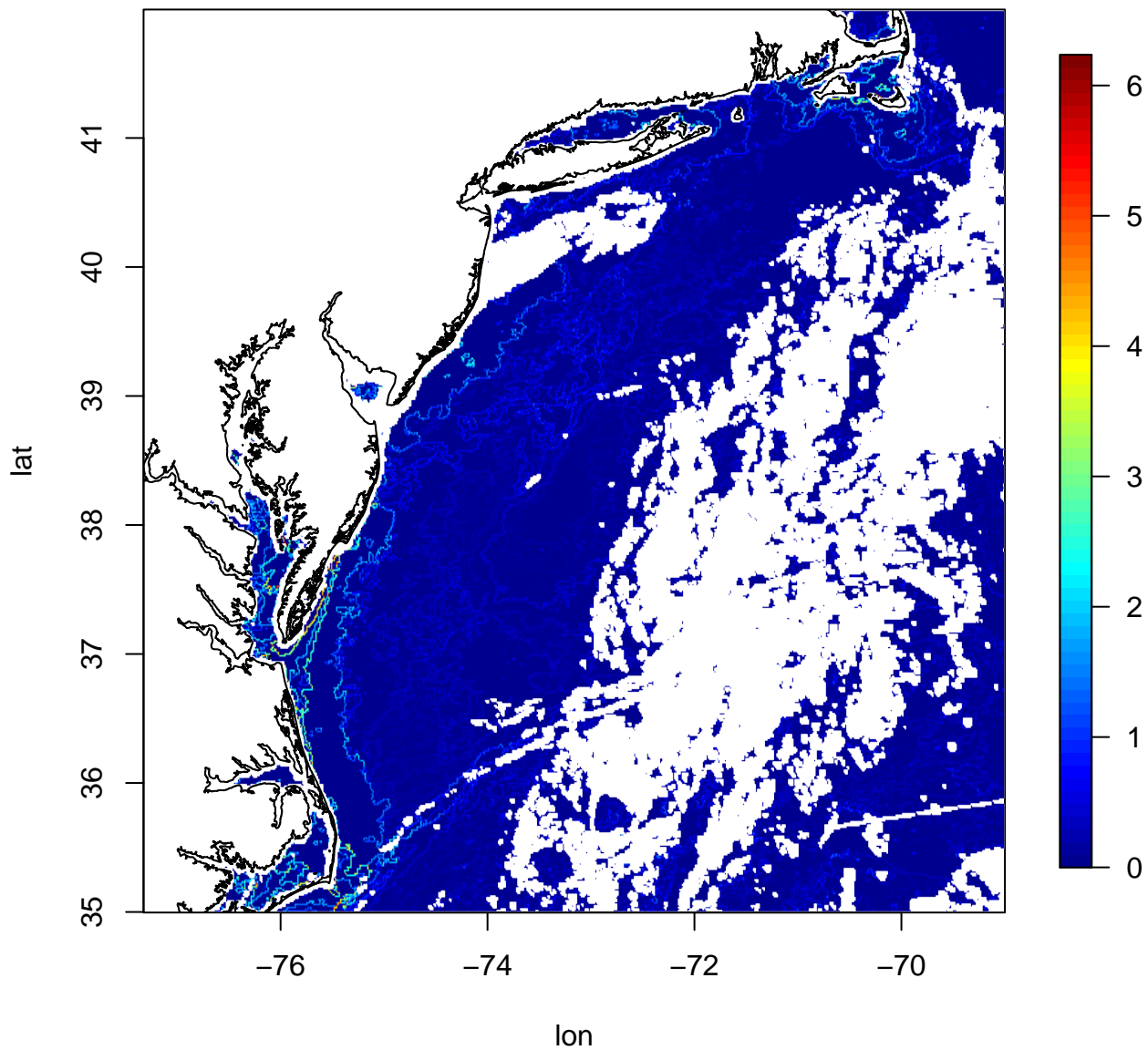
# EDA\_KG

## Gradient Strength for K-means Classification

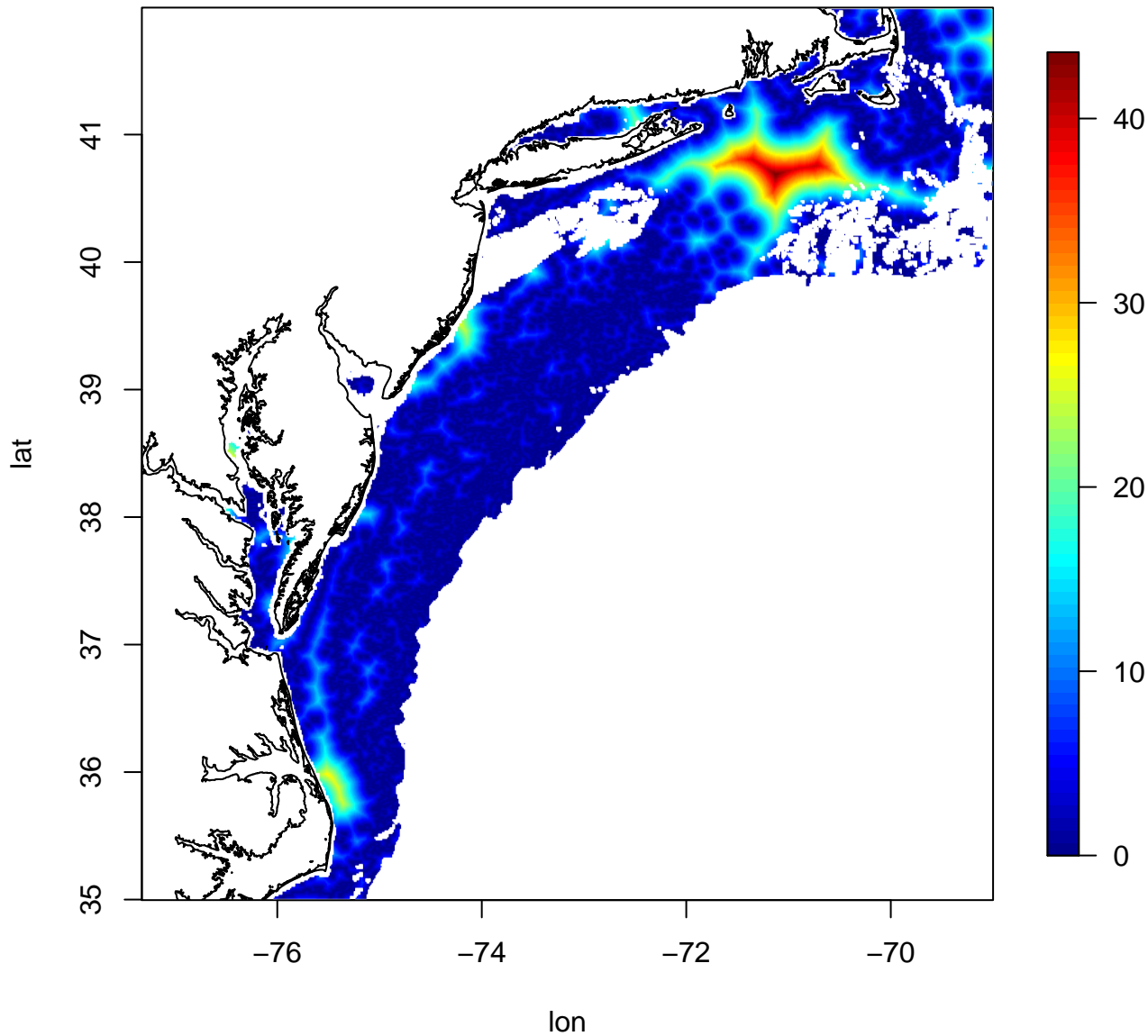


# EDA\_WKG

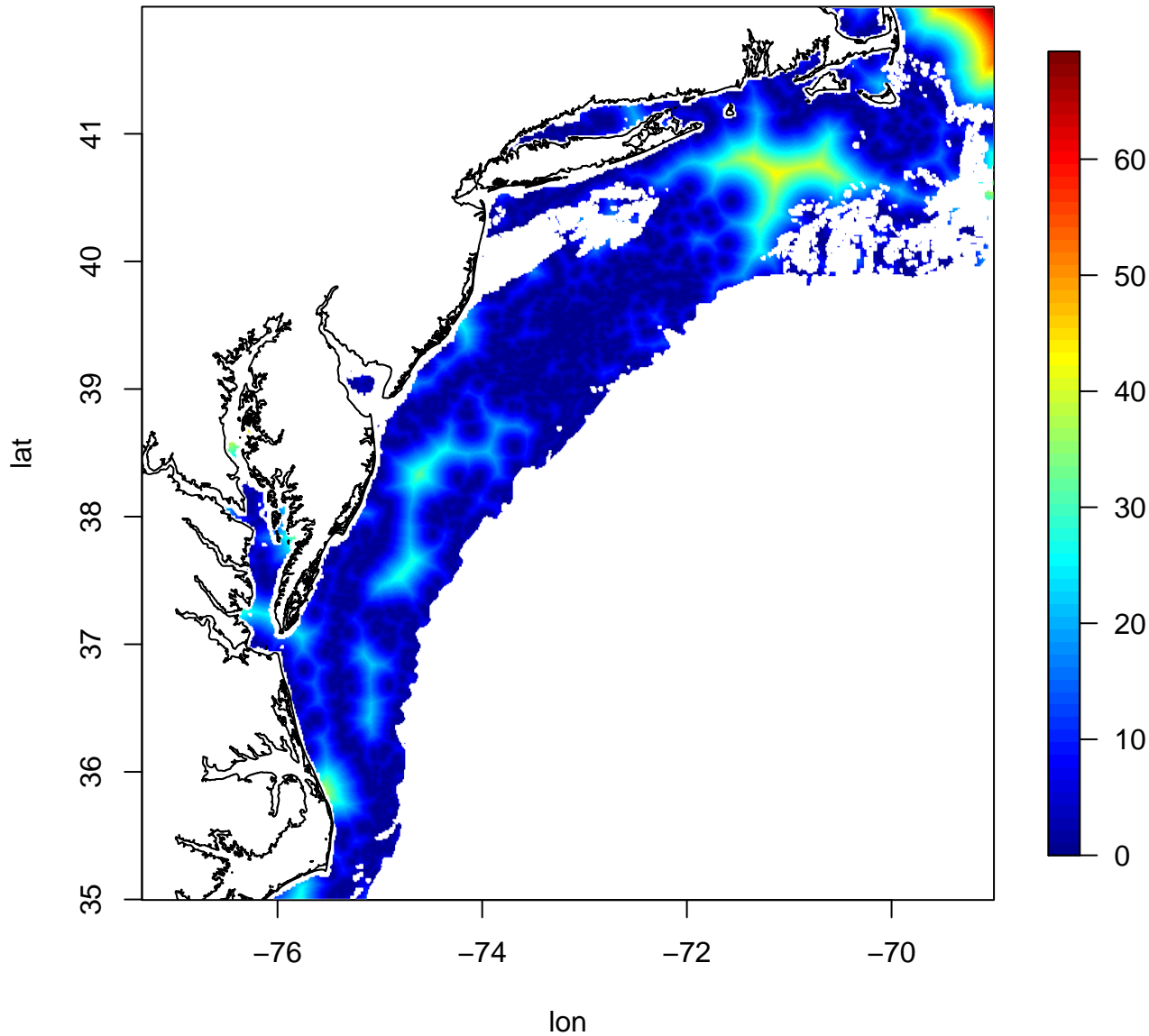
## Gradient Strength for Combined Wards and K-means Classification



EDA\_WG\_dist  
Minimum distance to gradient for Ward's Classification

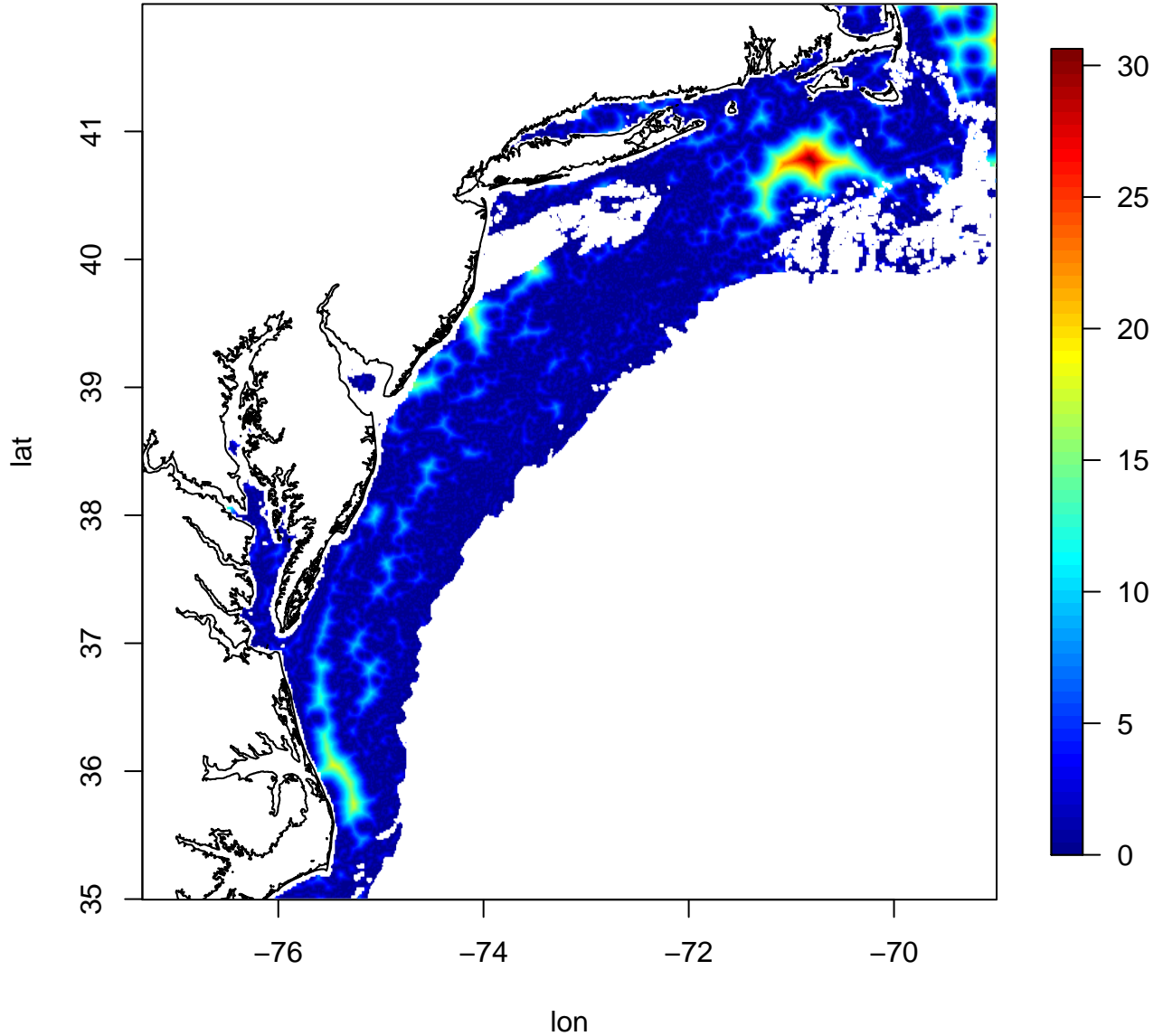


EDA\_KG\_dist  
Minimum distance to gradient for K-means Classification



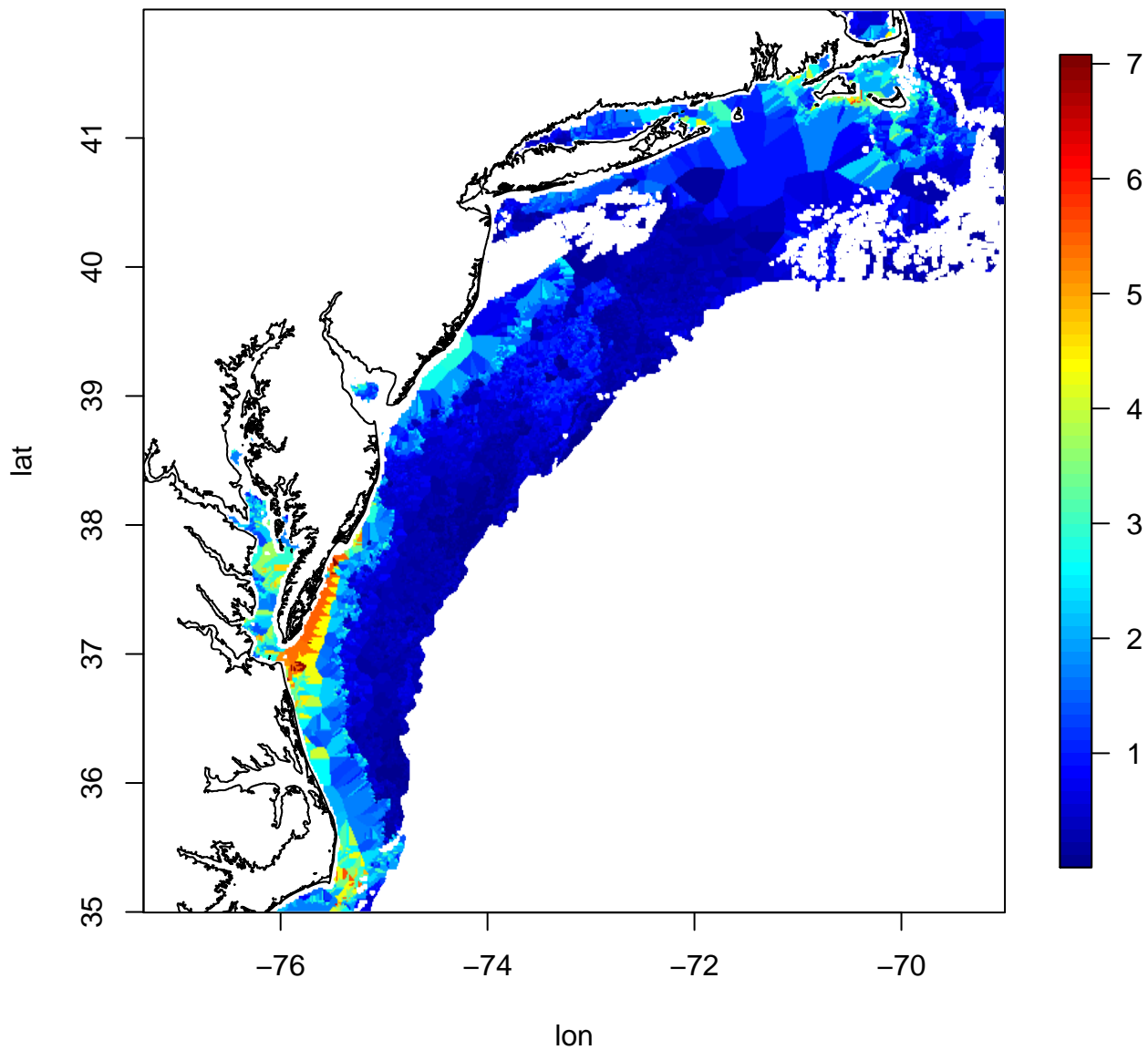
# EDA\_WKG\_dist

Minimum distance to gradient for Combined Wards and K-means Classification

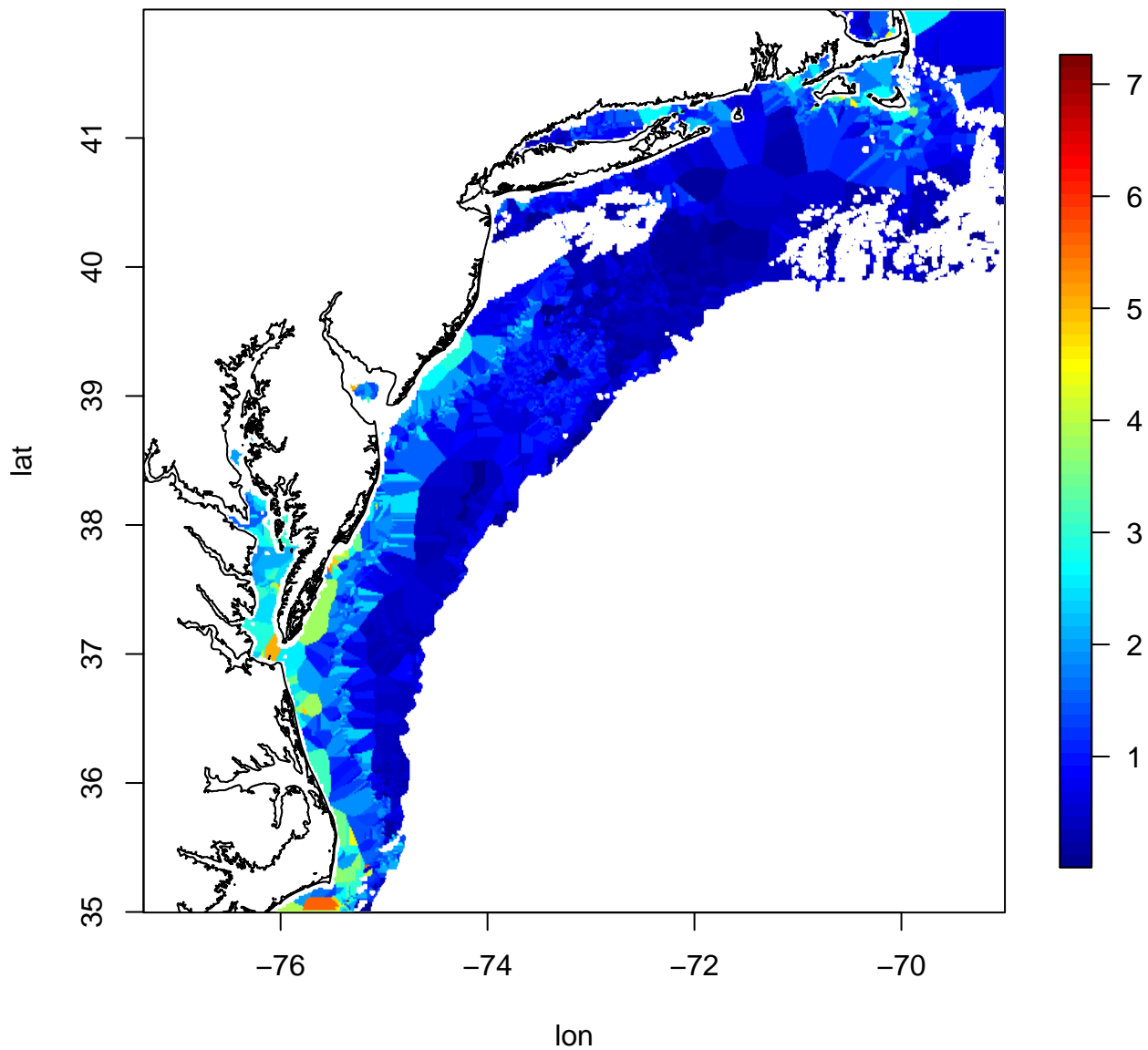


# EDA\_WG\_dist\_gs

## Gradient Strength for closest gradient for Ward's Classification

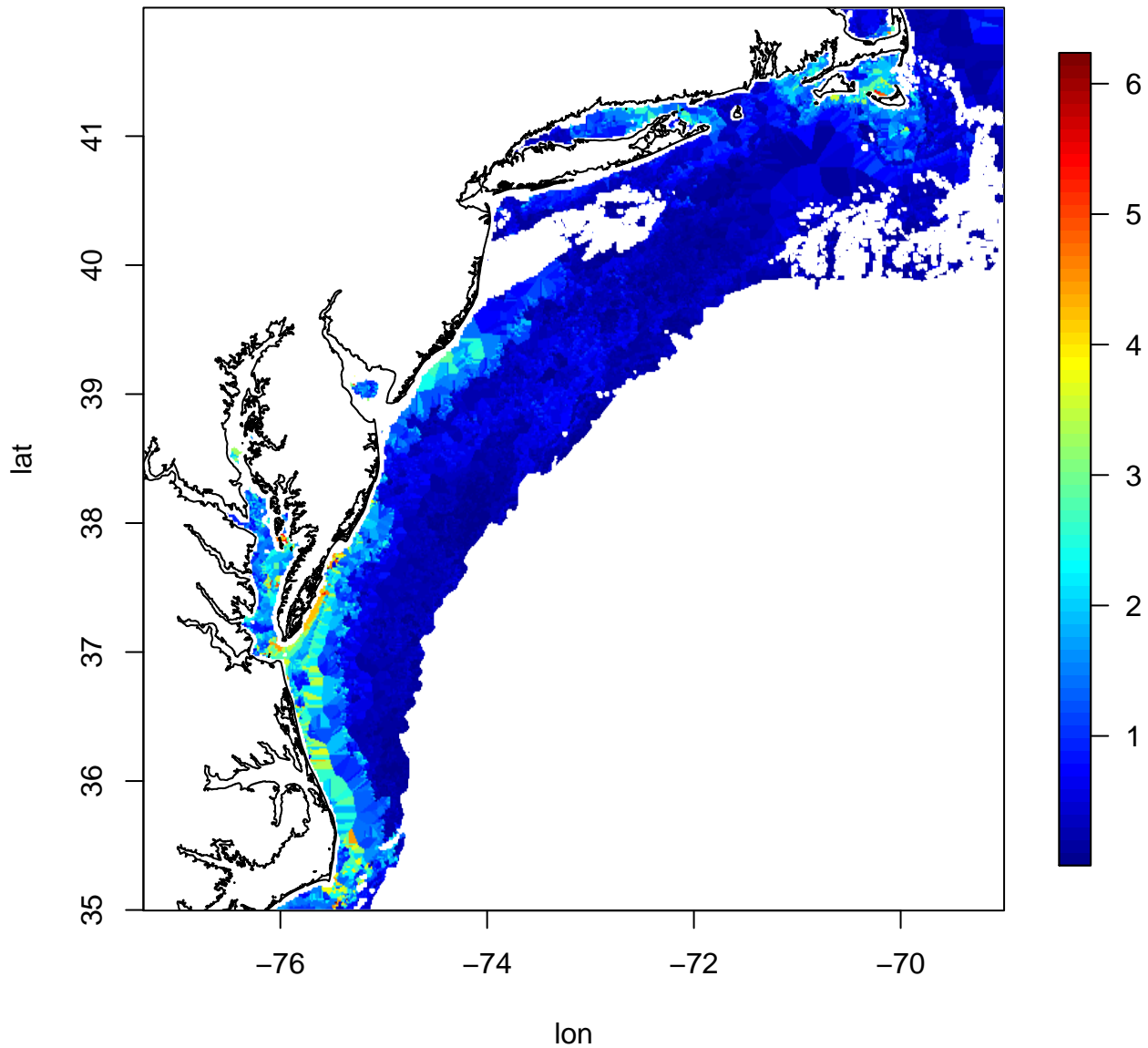


EDA\_KG\_dist\_gs  
Gradient Strength for closest gradient for K-means Classification



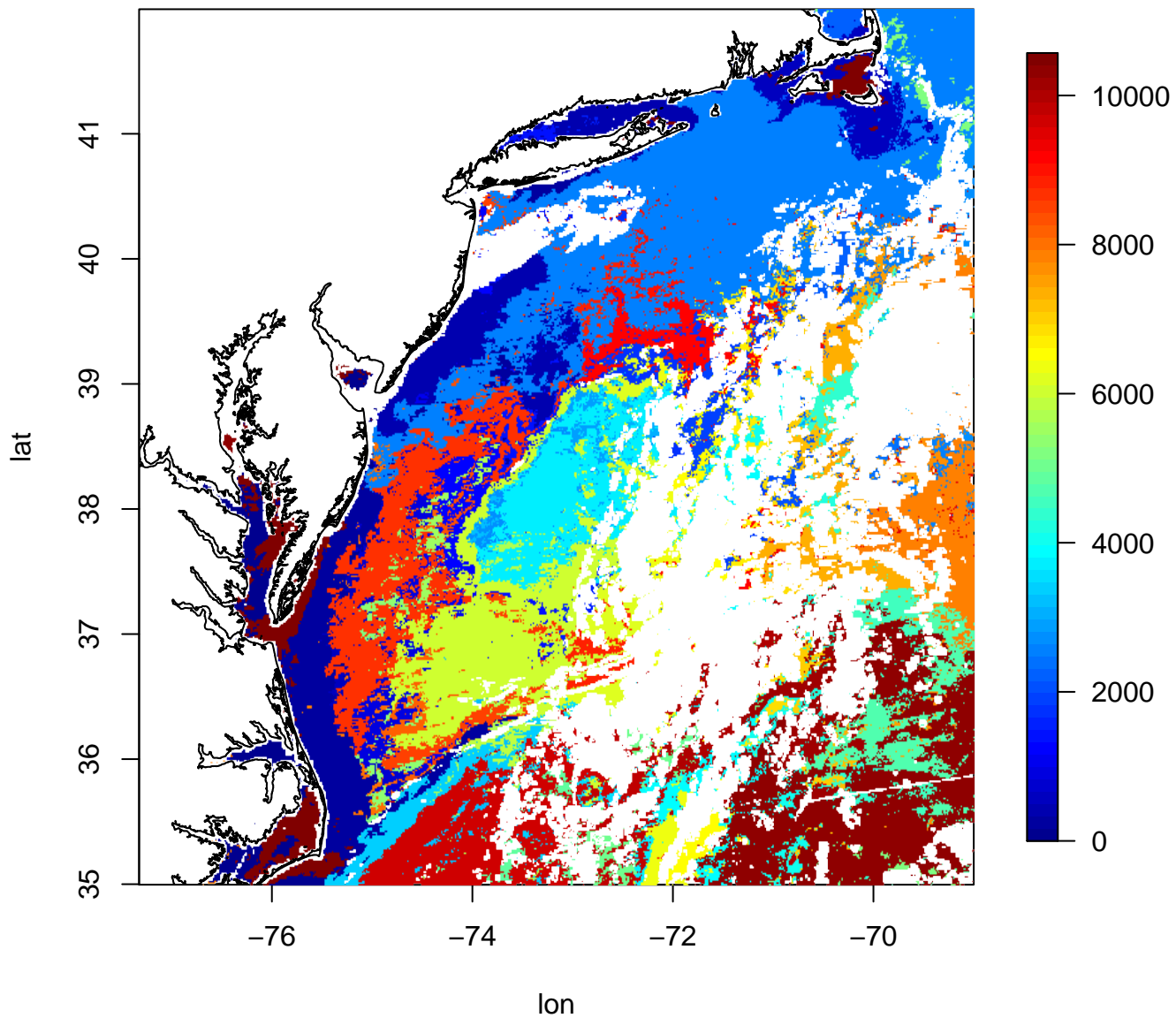
# EDA\_WKG\_dist\_gs

Gradient Strength for closest gradient for Combined Wards and K-means Classification

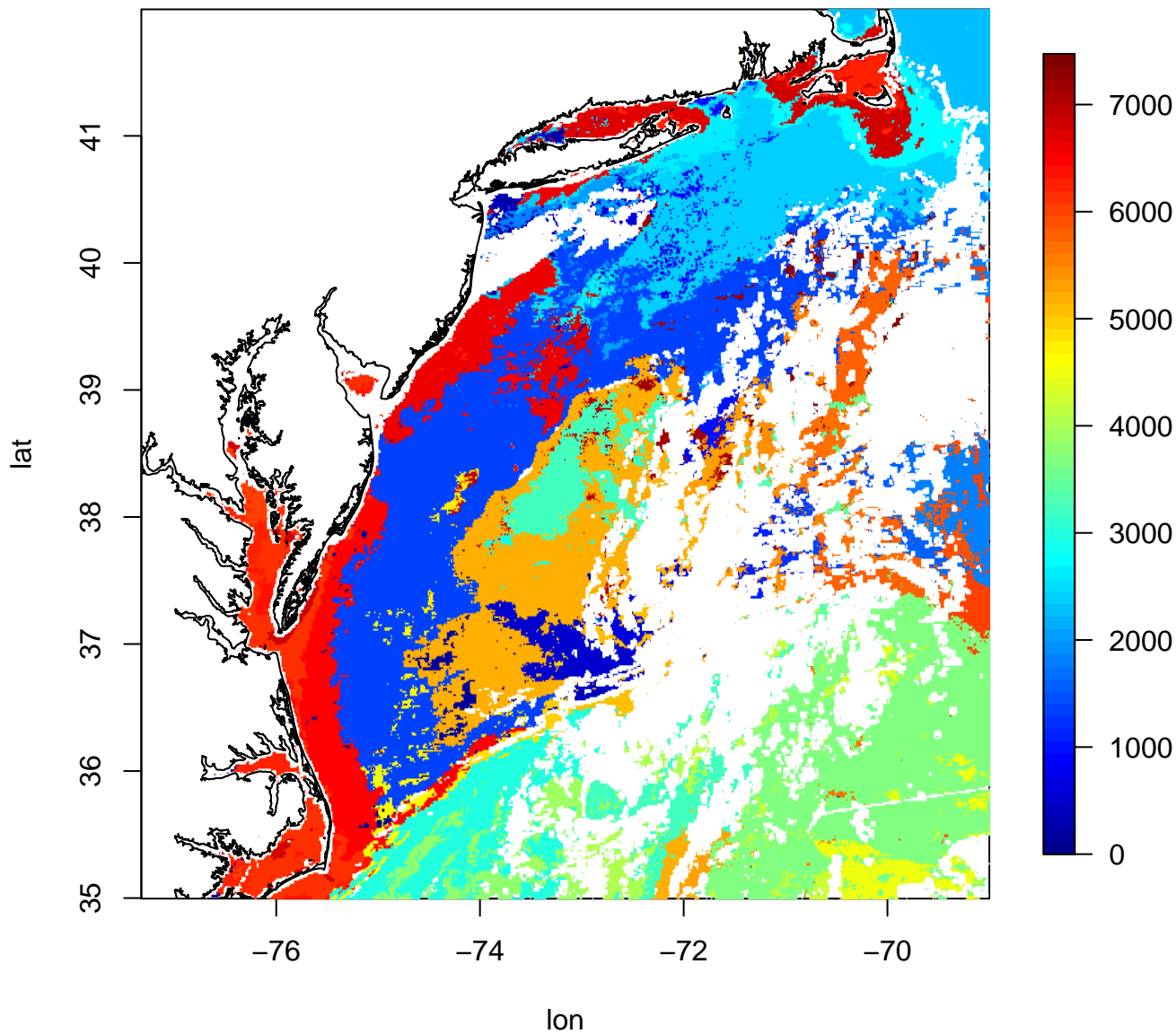




EDA\_W\_stamp  
StampID for Ward's Clustering



EDA\_K\_stamp  
StampID for K-Means Clustering



EDA\_WK\_stamp  
StampID for Combined Wards and K-means Classification

